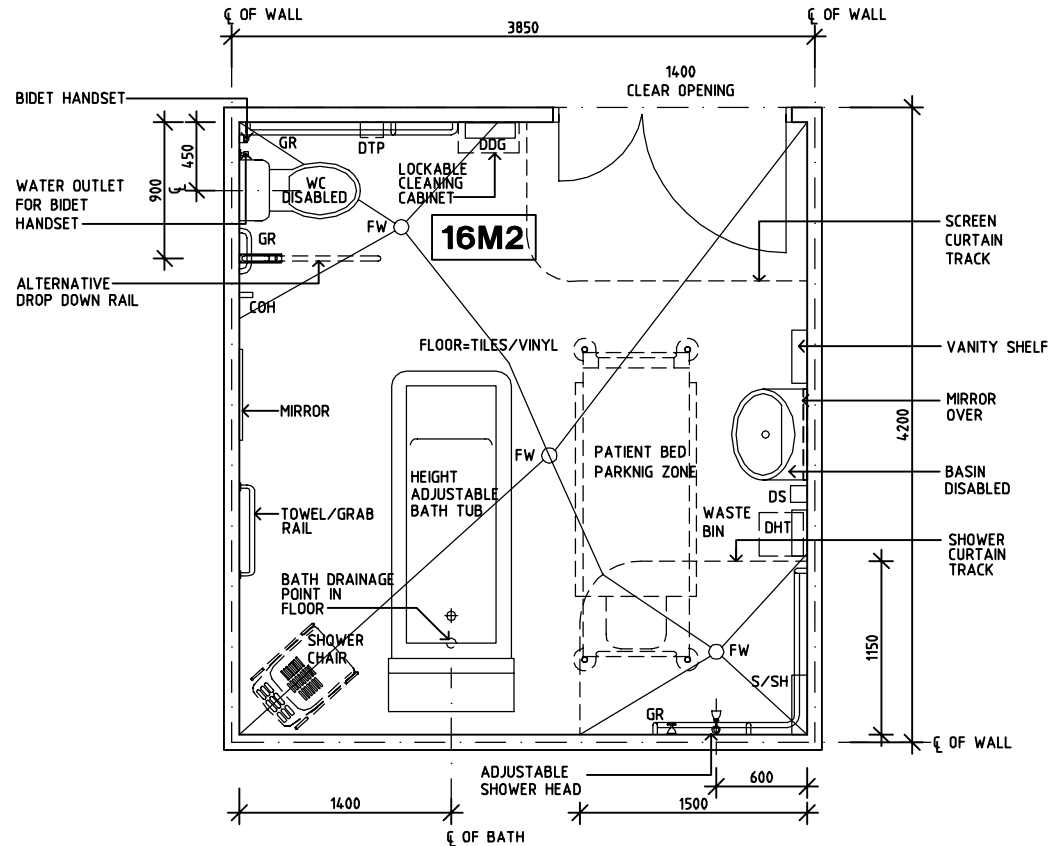


Indian HFG Standard Components

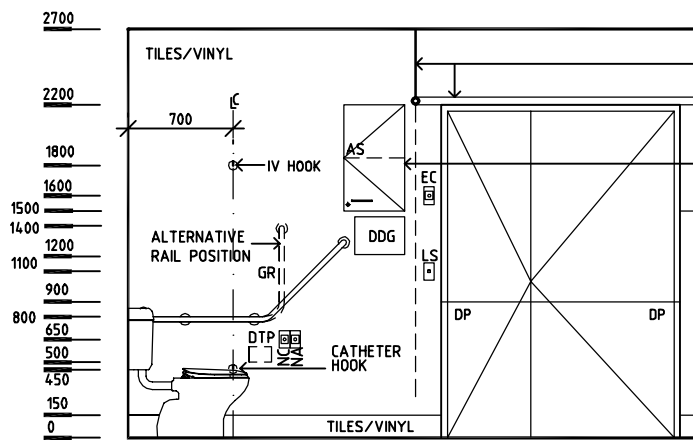
Room Layout Sheet

Room Name **Bathroom** RLS Room Code **BATH-IN**
 RDS Room Code **BATH-IN**

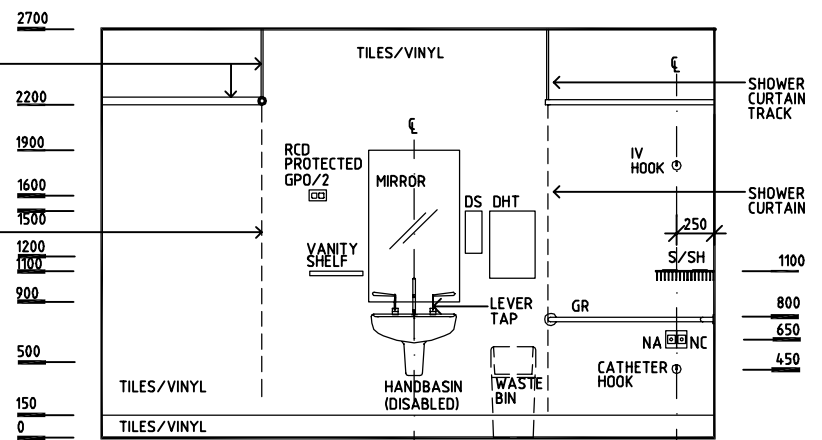
- COH COAT HOOK
- DHT DISPENSER-HAND TOWEL
- DP DOOR AND FRAME PROTECTION
- DS DISPENSER-SOAP
- DTP DISPENSER-TOILET PAPER
- EC EMERGENCY CALL
- FW FLOOR WASTE
- GR GRAB RAIL
- GPO/2 GENERAL PURPOSE OUTLET/DOUBLE
- LS LIGHT SWITCH
- NA NURSE/STAFF ASSIST BUTTON
- NC NURSE CALL
- RCD RESIDUAL CURRENT DEVICE
- S/SH SOAP/SHAMPOO HOLDER
- WC TOILET



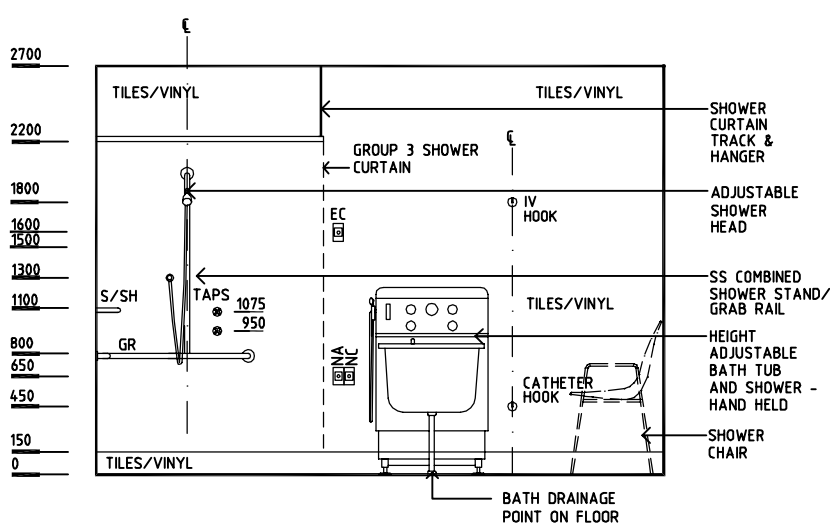
PLAN



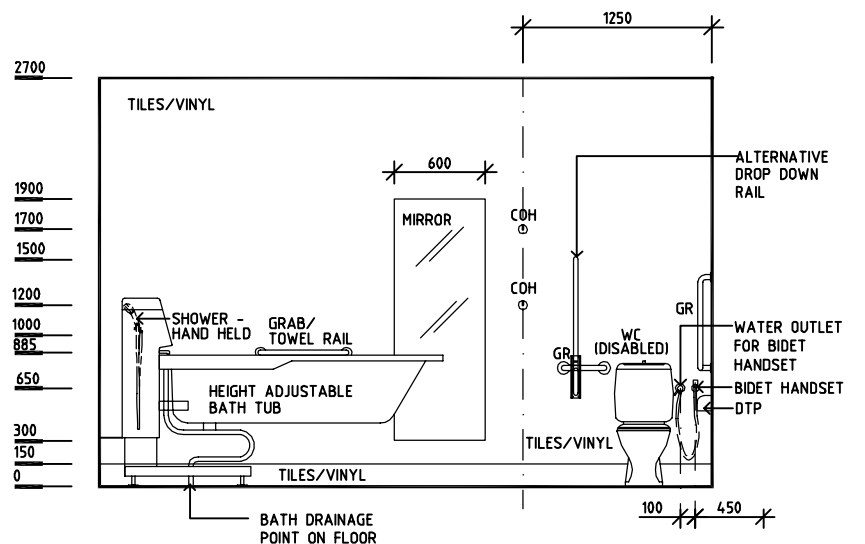
ELEVATION 1



ELEVATION 2



ELEVATION 3



ELEVATION 4

REV	DESCRIPTION	DATE	BY	REV	DESCRIPTION	DATE	BY	REV	DESCRIPTION	DATE	BY
1	FIRST ISSUE	24.02.2014	AA								

Department	Indian Health Facility Guidelines	Room Tag:	1360
Room Name	Bathroom	Room Code:	BATH-IN
Net Room Area Briefed	16.0 M2		
No of Rooms	1		
Subtotal of Briefed Area	16.00 M2		
Hours of Operation	24 Hours		
Occupancy	1 patient; 1-2 staff assisting		
Also covers these Rooms			
Description/ Special Requirements	<p>The bathroom provides for assisted bathing of patients, patient dressing, undressing, grooming and handwashing. It is also used for bathing of patients for treatment or aromatherapy. Facilities include an island bath, toilet, and handbasin; a separate shower within the room is optional. A low height adjustable shower is required over the bath. Hydraulic lift baths may be considered for Occupational Health & Safety purposes.</p> <p>The Bathroom should allow for independent disabled access as well as the manoeuvring of a patient on a lifting device or shower bed. Space may be required to enable transfer of a patient to the bath from both sides.</p> <p>Additional Design Requirements:</p> <ul style="list-style-type: none"> - The shower area must not have a raised hob. - The entrance to the bathroom is to be flush with the adjoining corridor. - Airconditioning and exhaust should be intermittent use and operate when light switch is activated or turned off. <p>Acoustics: Sound attenuation level - Medium. Acoustic privacy required.</p> <p>Body Protected electrical area</p>		
Amendment	05.03.2014 First Issue		

Room Fabric and outline specifications

ID	Fabric	Material	Finish	Specification	Selection	Remarks
5023	Ceiling	Plasterboard	Prefinished	Water resistant, drop in tiles, 600x1200		Water resistant flush set suspended also acceptable
6025	Cornice	Aluminium	Powdercoat	shadow line		
8010	Door protection	Composite	Prefinished PVC	Protection plate to 900 AFFL		
8040	Door protection	Composite	Prefinished PVC	To door frame		
9110	Doors	Solid Core	Paint	1 1/2 leaf		14000mm clear opening, privacy latch
1175	Floor finish	Tiles	Non-slip	Ceramic		non-slip floor vinyl also acceptable
2145	Skirting	Tiles	To match floor	Coved		or coved floor vinyl skirting to match floor vinyl
3000	Wall finish	Paint	Acrylic, washable			

Department Indian Health Facility Guidelines
 Room Name Bathroom

Room Tag: 1360
 Room Code: BATH-IN

ID	Fabric	Material	Finish	Specification	Selection	Remarks
3080	Wall finish	Tiles	Glazed	Full height		vinyl also acceptable

Fittings and Furniture (FF)

ID	Description	Category	Group	Qty	Selection / Remarks
1494	Cabinet: cleaning equipment	Furniture/ Fitting	1	1	lockable
2300	Chair: shower	Furniture/ Fitting	3	1	
3400	Coathook	Metalwork	1	4	1 at 1200 AFFL for wheelchair users
4700	Curtain track: privacy screen	Metalwork	1	1	to entry door
4800	Curtain track: shower	Metalwork	1	1	
5250	Curtain: privacy screen	Furniture/ Fitting	3	1	to entry door
5300	Curtain: shower	Furniture/ Fitting	3	1	
6152	Dispenser: disposable glove	Furniture/ Fitting	2	1	near entry
6154	Dispenser: paper/ hand towel	Furniture/ Fitting	2	1	to basin
6156	Dispenser: soap	Furniture/ Fitting	2	1	to basin
6160	Dispenser: toilet paper	Furniture/ Fitting	1	1	
8450	Grab rail: Shower	Metalwork	1	1	
8400	Grab rail: WC	Metalwork	1	2	
8500	Grab rail: WC, hinged	Metalwork	1	1	optional
9200	Hook: for catheter bag	Metalwork	1	3	
10800	Hook: for IV flasks	Metalwork	1	3	
13700	Mirror	Metalwork	1	1	above basin
13800	Mirror: full length	Metalwork	1	1	dressing
19910	Shelf: vanity	Furniture/ Fitting	1	1	
20650	Soap/ shampoo holder	Furniture/ Fitting	1	1	
23700	Towel rail	Metalwork	1	1	with grab rail fixings
24100	Waste bin: paper, 20 Litre	Furniture/ Fitting	3	1	to basin

Fixtures, Equipment and associated Services (FE)

ID	Description	Group	Qty	Ele	Data	CdW	HtW	WmW	Tap	Dns	Gas	Selection / Remarks
3050	Basin: handwash, disabled	1	1	___	___	yes	___	yes	yes	yes	___	
3410	Bath: adjustable height, hydraulic	1	1	___	___	yes	___	yes	yes	yes	___	similar to 'Arjo'
3003	Bidet handset	1	1	___	___	___	___	yes	yes	___	___	
47400	Shower: hand-held	1	1	___	___	yes	___	yes	yes	yes	___	low level over bath
47400	Shower: hand-held	1	1	___	___	yes	___	yes	yes	yes	___	short lever taps
55650	Toilet suite: disabled use	1	1	___	___	yes	___	___	yes	yes	___	with backrest

Services

ID	Description	Service Category	Qty	Selection / Remarks
5000	Airconditioning	HVAC		temp. to 26 degrees C
5019	Exhaust	HVAC		
4033	Floor waste	Hydraulics	3	+ special floor drain for height adjustable bath
6000	General fluorescent	Lighting		
8080	Emergency call	Nurse Call	2	+ indicator button & light
8070	Patient call pendant	Nurse Call	1	waterproof, for bath
8000	Patient/ Staff call	Nurse Call	3	+ indicator button & light
8010	Staff/ Nurse assist call	Nurse Call	3	+ indicator button & light



Department Indian Health Facility Guidelines
 Room Name Bathroom

Room Tag: 1360
 Room Code: BATH-IN

ID	Description	Service Category	Qty	Selection / Remarks
9040	Body protected	Power		
9001	GPO: Double	Power	1	locate near door outside room
9060	GPO: Special: for equipment	Power	1	for hair dryer & shaver use only; to comply with relevant electric safety guidelines