

Indian HFG Standard Components

Room Layout Sheet

Room Name **1Bed Room - Special**

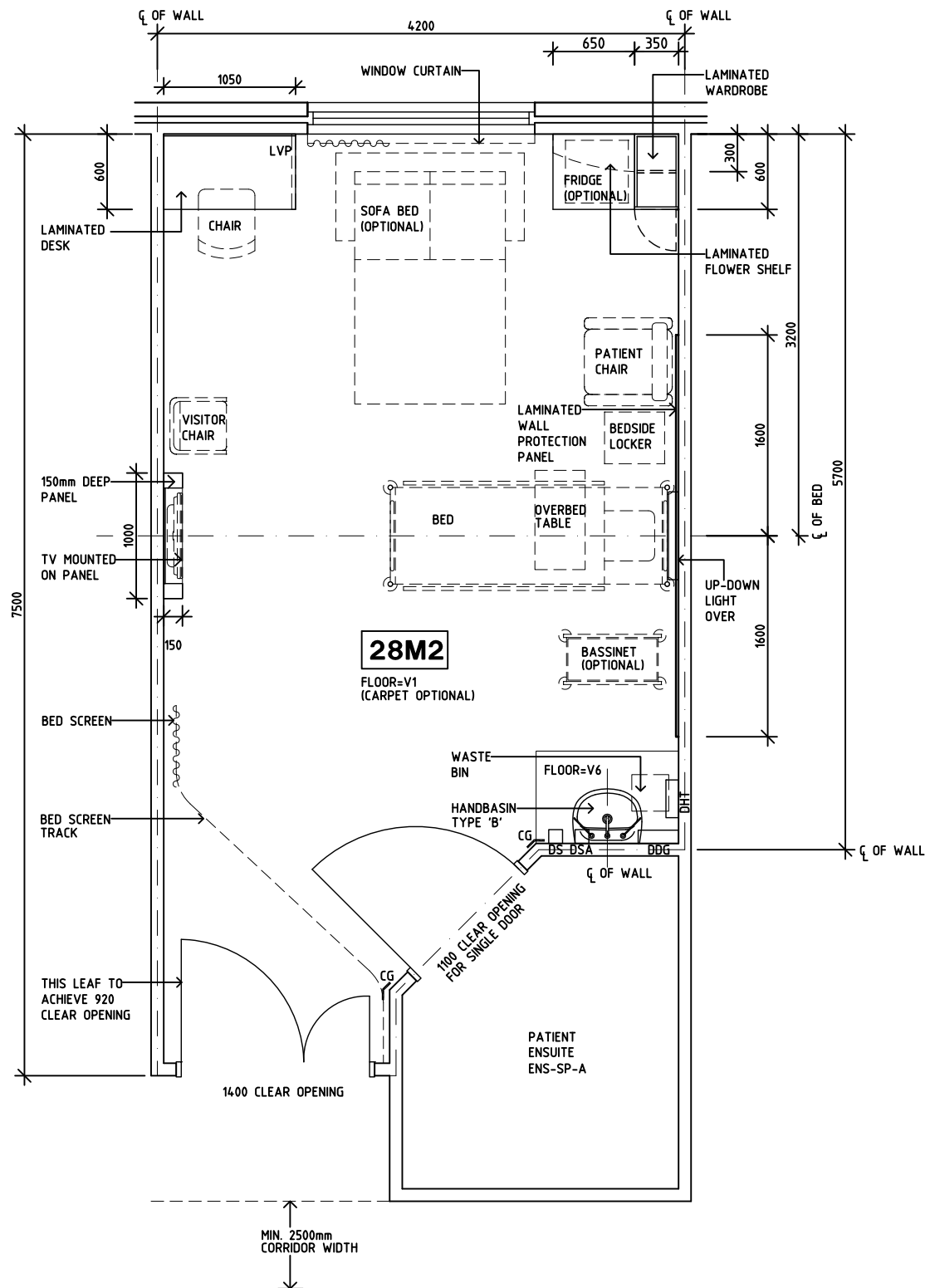
RLS Room Code

1BR-SP-A-IN

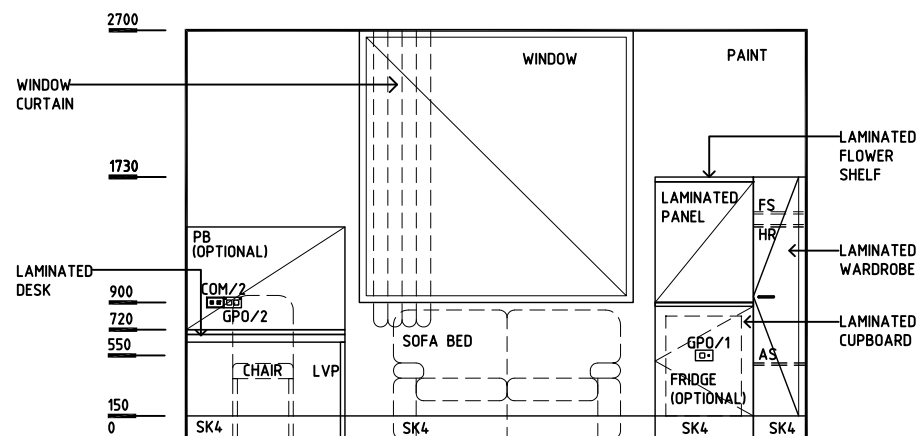
RDS Room Code

1BR-SP-A-IN

- AS ADJUSTABLE SHELF
- CG CORNER GUARD
- COM/2 COMMUNICATION OUTLET - DOUBLE
- DDG DISPENSER - DISPOSABLE GLOVES
- DHT DISPENSER - HAND TOWEL
- DS DISPENSER - SOAP
- DSA DISPENSER - SOAP ANTISEPTIC
- DP DOOR AND DOOR FRAME PROTECTION
- EC EMERGENCY CALL
- FS FIXED SHELF
- GPO/1 GENERAL PURPOSE OUTLET-SINGLE
- GPO/1EP EMERGENCY POWER - SINGLE
- GPO/2 GENERAL POWER OUTLET - DOUBLE
- GPO/C GENERAL POWER OUTLET - CLEANER'S
- GPO/S SPECIAL PURPOSE OUTLET
- HR HANGING RAIL
- LS/B LIGHT SWITCH - BED
- LS/ENS LIGHT SWITCH - ENSUITE
- LS/R LIGHT SWITCH - ROOM
- LS/UDL LIGHT SWITCH - UP-DOWN LIGHT
- LVP LAMINATE VERTICAL SUPPORT PANEL
- MA MEDICAL AIR
- MATV MASTER ANTENNA TV
- NA NURSE ASSIST CALL
- NC PATIENT NURSE CALL
- O2 OXYGEN
- RCD RESIDUAL CURRENT DEVICE
- S SUCTION
- SBB SUCTION BOTTLE BRACKET
- SK4 FLOOR VINYL COVED SKIRTING
- V1 VINYL FLOORING, STANDARD
- V6 VINYL FLOORING, TEXTURED



PLAN



ELEVATION 1

REV	DESCRIPTION	DATE	BY	REV	DESCRIPTION	DATE	BY	REV	DESCRIPTION	DATE	BY
1	FIRST ISSUE	24.22014	AA								

	Indian Health Facility Guidelines	DESIGNED CC/SYH	APPROVED AA/JW/DB	DATE 24.2.2014	SCALE(S) 1:50 in A3	SHEET 1 of 2
		CAD FILE NAME 1BR-SP-A-IN		PAPER DRAWING ID 1BR-SP-A-INa		ISSUE 1
		Indian Health Facility Guidelines at: www.healthdesign.com.au/hfg Editable version of Standard Components on Health Facility Briefing System (HFBS) at: www.healthdesign.com.au Provided by TAHPI				

This document is for advisory purpose only

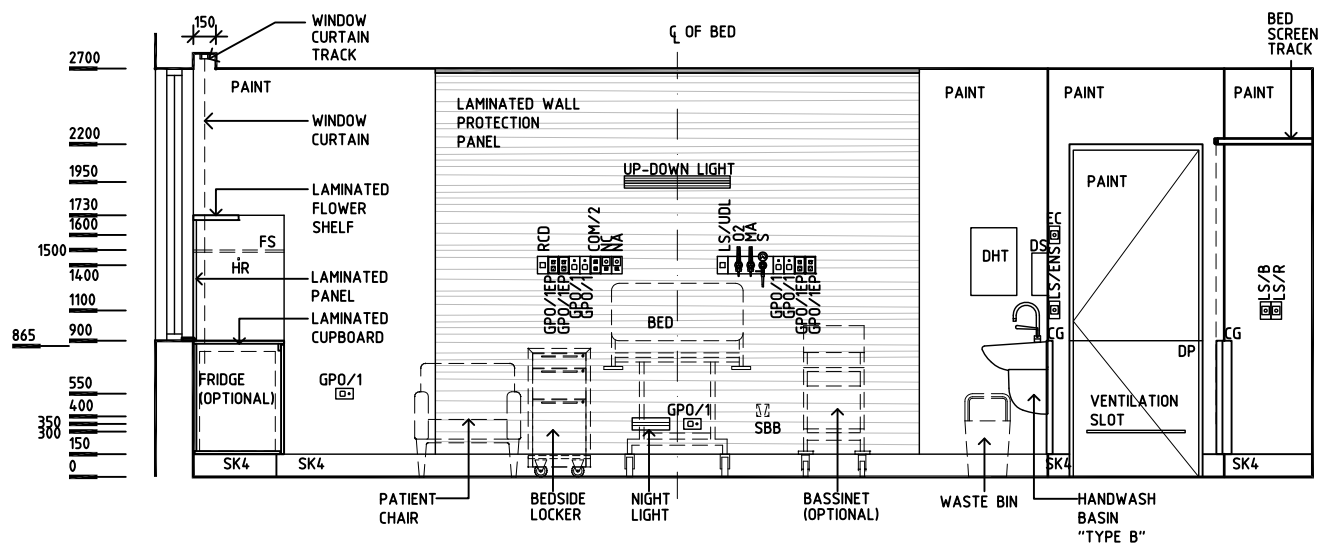
Indian HFG Standard Components

Room Layout Sheet

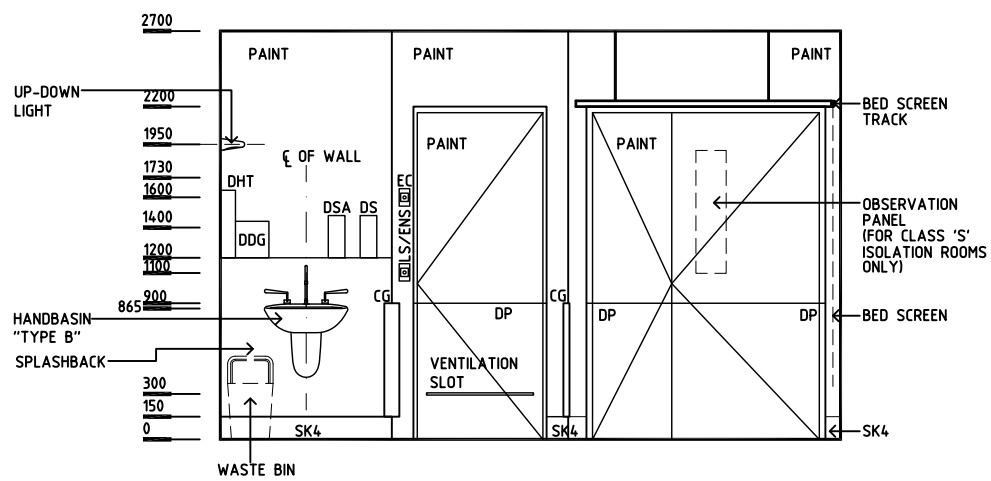
Room Name | **1 Bed Room - Special**

RLS Room Code **1BR-SP-A-IN**
RDS Room Code **1BR-SP-A-IN**

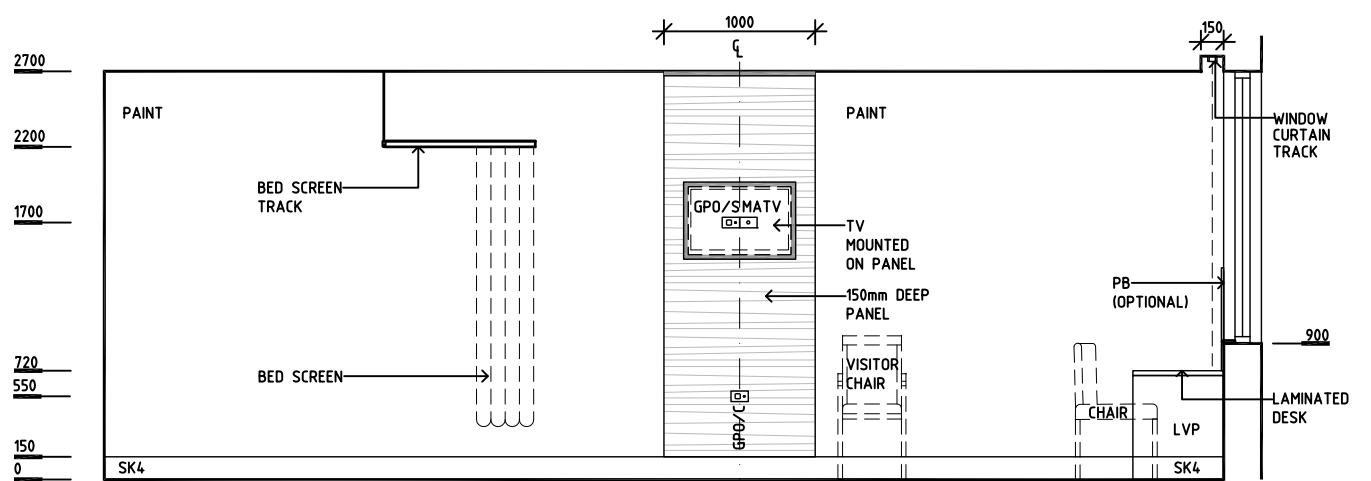
- AS ADJUSTABLE SHELF
- CG CORNER GUARD
- COM/2 COMMUNICATION OUTLET - DOUBLE
- DDG DISPENSER - DISPOSABLE GLOVES
- DHT DISPENSER - HAND TOWEL
- DS DISPENSER - SOAP
- DSA DISPENSER - SOAP ANTISEPTIC
- DP DOOR AND DOOR FRAME PROTECTION
- EC EMERGENCY CALL
- EC EMERGENCY CALL
- FS FIXED SHELF
- GPO/1 GENERAL PURPOSE OUTLET-SINGLE
- GPO/1EP EMERGENCY POWER - SINGLE
- GPO/2 GENERAL PURPOSE OUTLET - DOUBLE
- GPO/C GENERAL POWER OUTLET - CLEANER'S
- GPO/S SPECIAL PURPOSE OUTLET
- HR HANGING RAIL
- LS/B LIGHT SWITCH - BED
- LS/ENS LIGHT SWITCH - ENSUITE
- LS/R LIGHT SWITCH - ROOM
- LS/UDL LIGHT SWITCH - UP-DOWN LIGHT
- LVP LAMINATE VERTICAL SUPPORT PANEL
- MA MEDICAL AIR
- MATV MASTER ANTENNA TV
- NA NURSE ASSIST CALL
- NC PATIENT NURSE CALL
- O2 OXYGEN
- RCD RESIDUAL CURRENT DEVICE
- S SUCTION
- SBB SUCTION BOTTLE BRACKET
- SK4 FLOOR VINYL COVERED SKIRTING
- V1 VINYL FLOORING, STANDARD
- V6 VINYL FLOORING, TEXTURED



ELEVATION 2



ELEVATION 3



ELEVATION 4

REV	DESCRIPTION	DATE	BY	REV	DESCRIPTION	DATE	BY	REV	DESCRIPTION	DATE	BY
1	FIRST ISSUE	24.2.2014	AA								

<p>Indian Health Facility Guidelines</p>	Indian Health Facility Guidelines at: www.healthdesign.com.au/ihfg Editable version of Standard Components on Health Facility Briefing System (HFBS) at: www.healthdesign.com.au Provided by TAHPI		DESIGNED	APPROVED	DATE	SCALE(S)	SHEET
	CC/SYH	AA/JW/SYH	24.2.2014	1:50 in A3	2 of 2		
	CAD FILE NAME		PAPER DRAWING ID		ISSUE		
1BR-SP-A-IN		1BR-SP-A-INb		1			

This document is for advisory purpose only

The Indian Health Facility Guidelines recommends the use of **HFBS** “**Health Facility Briefing System**” to edit all room data sheet information for your project.

HFBS provides edit access to all HFG India standard rooms, departments, and more than 40 report templates.

HFBS Health Facility Briefing System



Briefing Module

The Health Facility Briefing System (HFBS) has numerous modules available via annual subscription. It suits healthcare Architects, Medical Planners, Equipment Planners Project Managers and Health Authorities.

Use the HFBS Briefing Module to quickly drag in health facility departments or pre-configured room templates from the HFG standard, edit the room features such as finishes, furniture, fittings, fixtures, medical equipment, engineering services. The system can print or download as PDF more than 100 custom reports including room data sheets, schedules, and more...

To learn more about the HFBS web-based Healthcare Briefing and Design Software and to obtain editable versions of the “Standard Components” including Room Data Sheets (RDS) and Room Layout Sheets (RLS) offered on the HFG website, signup for HFBS using the link below.

Get Started Now:
hfbs.healthdesign.com.au

- ✓ HFG India Room Data Sheets and Departments are instantly editable in the HFBS software available online in the HFBS India Domain.
- ✓ You can access hundreds of report templates to print your HFG India room data in HFBS.
- ✓ HFBS has a onetime free 3 day trial available to all new users – signup for the HFBS India Domain today.

Get Started Now:
hfbs.healthdesign.com.au



HFBS

Health Facility Briefing System

hfbsinfo.com | techsupport@healthdesign.com.au

Department	Indian Health Facility Guidelines	Room Tag:	1060
Room Name	1 Bed Room - Special, 28m2	Room Code:	1BR-SP-A-28-IN
Net Room Area Briefed	28.0 M2		
No of Rooms	1		
Subtotal of Briefed Area	28.00 M2		
Hours of Operation	24 Hours		
Occupancy	1 patient; 1-2 visitors, 1-2 staff intermittently		
Also covers these Rooms			
Description/ Special Requirements	<p>A 1 Bed Room - Special will accommodate one patient for the delivery of nursing and medical care and treatment. It will be a larger room to accommodate special needs patients such as Palliative Care, Sub-acute Care, Rehabilitation and High Dependency. The additional floor area allows for larger or additional furniture and equipment. It also permits overnight stay by relatives. Natural light and outlook is essential; the room requires the ability to view out of the window from either the chair or bed. Bedrooms for Palliative Care may also include a beverage making area with a small refrigerator.</p> <p>Acoustics: Acoustic privacy is required.</p> <p>Body protected electrical area</p>		
Amendment	05.03.2014 First Issue		

Room Fabric and outline specifications

ID	Fabric	Material	Finish	Specification	Selection	Remarks
5010	Ceiling	Plasterboard	Paint, washable	Flush set, suspended		
6025	Cornice	Aluminium	Powdercoat	shadow line		
8010	Door protection	Composite	Prefinished PVC	Protection plate to 900 AFFL		
8040	Door protection	Composite	Prefinished PVC	To door frame		
9110	Doors	Solid Core	Paint	1 1/2 leaf		1400mm clear opening; latch set, H/O device
1000	Floor finish	Vinyl	Standard slip resistant	Seamless, coved		Carpet also acceptable
1045	Floor finish	Vinyl, non slip	Textured	Seamless, coved		under basin
2000	Skirting	Vinyl	Prefinished	Floor vinyl coved, 150 mmH		timber skirting if carpeted
3067	Wall finish	Laminate	Prefinished			wall panels
3000	Wall finish	Paint	Acrylic, washable			
3022	Wall finish	Resinate, 6mm	Prefinished	Splashback		to basin
3092	Wall protection	MDF	Laminate	Bed protection wall panel		
4045	Wall protection	Timber	Clear finish	Corner guards		Where required

Department Indian Health Facility Guidelines
Room Name 1 Bed Room - Special, 28m2

Room Tag: 1060
Room Code: 1BR-SP-A-28-IN

ID	Fabric	Material	Finish	Specification	Selection	Remarks
7001	Windows					Natural light & outlook essential.

Fittings and Furniture (FF)

ID	Description	Category	Group	Qty	Selection / Remarks
150	Air flowmeter	Furniture/ Fitting	3	1	medical air
480	Bassinet	Furniture/ Fitting	3	1	optional
1465	Bracket: suction bottle	Furniture/ Fitting	2	1	
23410	Bracket: television, wall mount	Metalwork	1	1	
2050	Chair: lounge, sofa bed	Furniture/ Fitting	3	1	optional
2150	Chair: patient	Furniture/ Fitting	3	2	1 to desk
2650	Chair: visitor, patient	Furniture/ Fitting	3	1	
4391	Cupboard: special	Furniture/ Fitting	1	1	for refrigerator
4330	Cupboard: wardrobe	Furniture/ Fitting	1	1	
4600	Curtain track: bed screen	Metalwork	1	1	
4900	Curtain track: window	Metalwork	1	1	
5000	Curtain: bed screen	Furniture/ Fitting	3	1	
5410	Curtain: window, drapes	Furniture/ Fitting	3	1	set
5910	Desk: built in	Furniture/ Fitting	1	1	
6152	Dispenser: disposable glove	Furniture/ Fitting	2	1	near basin
6154	Dispenser: paper/ hand towel	Furniture/ Fitting	2	1	to basin
6156	Dispenser: soap	Furniture/ Fitting	2	1	to basin
6158	Dispenser: soap antiseptic	Furniture/ Fitting	2	1	to basin
12450	Locker: bedside	Furniture/ Fitting	3	1	mobile, 2 lockable drawers
16250	Oxygen flowmeter	Furniture/ Fitting	3	1	
17360	Pinboard: fabric covered	Furniture/ Fitting	2	1	optional; above desk
19800	Shelf: laminate	Furniture/ Fitting	1	1	for flowers
21950	Suction adapter	Furniture/ Fitting	3	1	
22000	Suction bottle	Furniture/ Fitting	3	1	
16200	Table: overbed	Furniture/ Fitting	3	1	
24100	Waste bin: paper, 20 Litre	Furniture/ Fitting	3	1	to basin

Fixtures, Equipment and associated Services (FE)

ID	Description	Group	Qty	Ele	Data	CdW	HtW	WmW	Tap	Dns	Gas	Selection / Remarks
2800	Basin: handwash, Type B	1	1	___	___	yes	___	yes	yes	yes	___	refer to BHWS-B-U (sim)
3700	Bed: inpatient, electric	3	1	yes	___	___	___	___	___	___	___	
43800	Refrigerator: under-bench, 120 Litre	3	1	yes	___	___	___	___	___	___	___	optional
54510	Telephone: handset, standard	3	1	___	yes	___	___	___	___	___	___	
3031	Television: flat screen	3	1	yes	___	___	___	___	___	___	___	wall mounted

Services

ID	Description	Service Category	Qty	Selection / Remarks
1090	TV: MATV	Communications	1	
1006	Voice / Data outlet: double	Communications	2	1-patient services panel; 1-desk; 1 outlet for telephone to each panel
5000	Airconditioning	HVAC		



Department Indian Health Facility Guidelines
Room Name 1 Bed Room - Special, 28m2

Room Tag: 1060
Room Code: 1BR-SP-A-28-IN

ID	Description	Service Category	Qty	Selection / Remarks
6001	General: colour corrected	Lighting		
6060	Special: night lights	Lighting		
6050	Special: reading	Lighting		up/down light
7020	Medical Air (MA)	Medical Gases	1	
7000	Oxygen (O2)	Medical Gases	1	
7040	Suction	Medical Gases	1	
8080	Emergency call	Nurse Call	1	+ indicator button & light
8005	Patient call handset	Nurse Call	1	call button & light switch on the handset
8000	Patient/ Staff call	Nurse Call	1	+ indicator button & light
8010	Staff/ Nurse assist call	Nurse Call	1	+ indicator button & light
9040	Body protected	Power		
9015	GPO: Cleaner	Power	1	
9001	GPO: Double	Power	1	desk
9010	GPO: Emergency power, single	Power	4	Bedhead
9000	GPO: Single	Power	4	Bedhead
9000	GPO: Single	Power	1	adjacent to patient chair
9000	GPO: Single	Power	1	Bedhead low level, for electric bed
9000	GPO: Single	Power	1	Fridge (optional)
9060	GPO: Special: for equipment	Power	1	TV



The Indian Health Facility Guidelines recommends the use of **HFBS** “**Health Facility Briefing System**” to edit all room data sheet information for your project.

HFBS provides edit access to all HFG India standard rooms, departments, and more than 40 report templates.

HFBS Health Facility Briefing System



Briefing Module

The Health Facility Briefing System (HFBS) has numerous modules available via annual subscription. It suits healthcare Architects, Medical Planners, Equipment Planners Project Managers and Health Authorities.

Use the HFBS Briefing Module to quickly drag in health facility departments or pre-configured room templates from the HFG standard, edit the room features such as finishes, furniture, fittings, fixtures, medical equipment, engineering services. The system can print or download as PDF more than 100 custom reports including room data sheets, schedules, and more...

To learn more about the HFBS web-based Healthcare Briefing and Design Software and to obtain editable versions of the “Standard Components” including Room Data Sheets (RDS) and Room Layout Sheets (RLS) offered on the HFG website, signup for HFBS using the link below.

Get Started Now:
hfbs.healthdesign.com.au

- ✓ HFG India Room Data Sheets and Departments are instantly editable in the HFBS software available online in the HFBS India Domain.
- ✓ You can access hundreds of report templates to print your HFG India room data in HFBS.
- ✓ HFBS has a onetime free 3 day trial available to all new users – signup for the HFBS India Domain today.

Get Started Now:
hfbs.healthdesign.com.au



HFBS

Health Facility Briefing System

hfbsinfo.com | techsupport@healthdesign.com.au

Indian HFG Standard Components

Room Layout Sheet

Room Name **2 Bed Room - Inboard Ensuite**

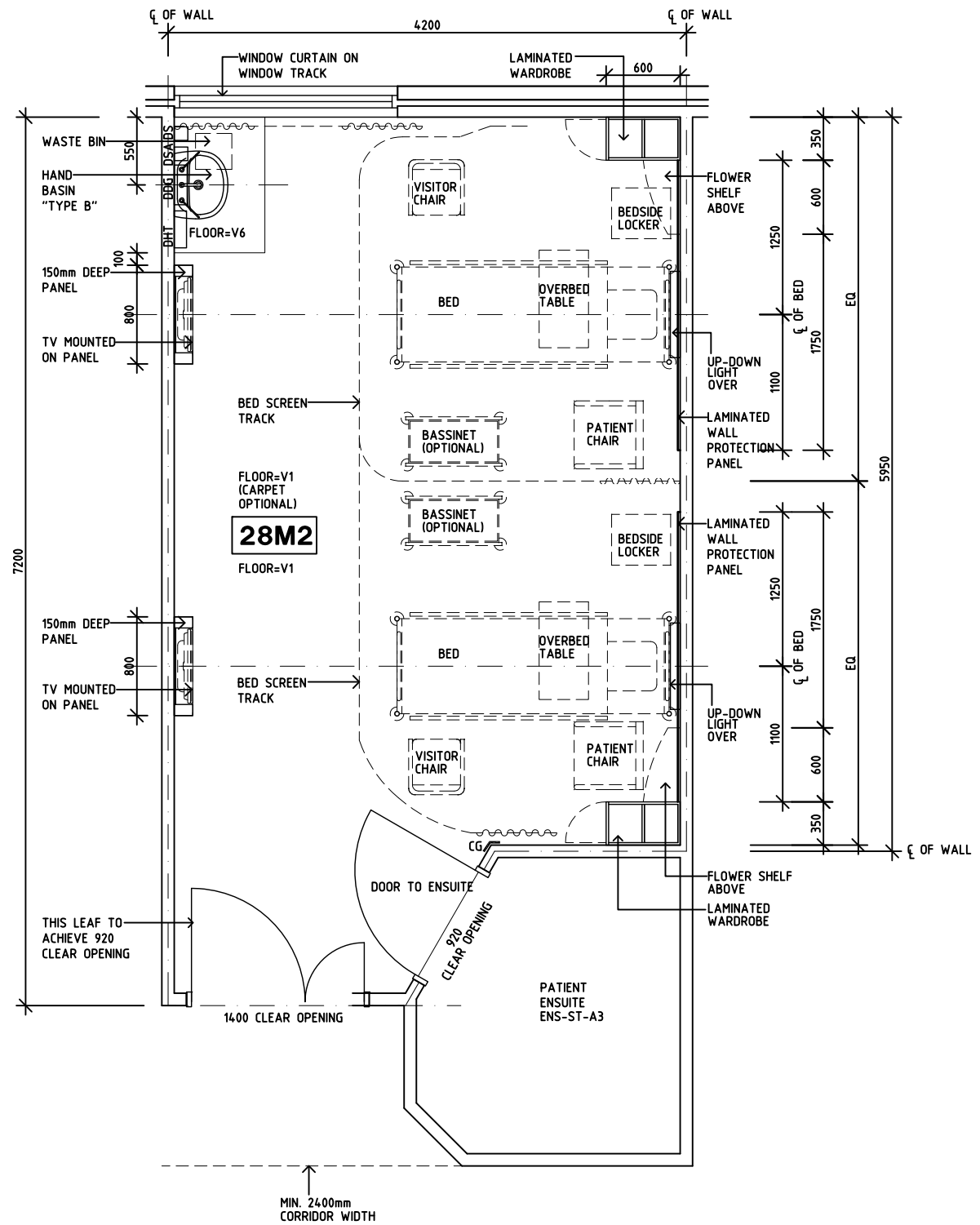
RLS Room Code

2BR-ST-A-IN

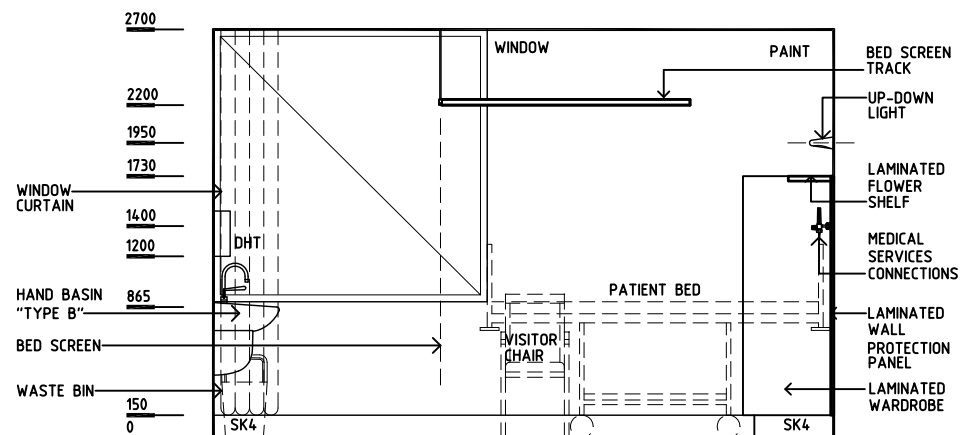
RDS Room Code

2BR-ST-IN

- AS ADJUSTABLE SHELF
- CG CORNER GUARD
- COM/2 COMMUNICATION OUTLET - DOUBLE
- DDG DISPENSER - DISPOSABLE GLOVES
- DHT DISPENSER - HAND TOWEL
- DP DOOR AND DOOR FRAME PROTECTION
- DS DISPENSER - SOAP
- DSA DISPENSER - SOAP ANTISEPTIC
- EC EMERGENCY CALL
- FS FIXED SHELF
- GPO/1 GENERAL PURPOSE OUTLET-SINGLE
- GPO/1EP EMERGENCY POWER - SINGLE
- GPO/C GENERAL PURPOSE OUTLET- CLEANER'S
- GPO/S SPECIAL PURPOSE OUTLET
- LS/B LIGHT SWITCH - BED
- LS/ENS LIGHT SWITCH - ENSUITE
- LS/R LIGHT SWITCH - ROOM
- LS/UDL LIGHT SWITCH - UP-DOWN LIGHT
- MA MEDICAL AIR
- MATV MASTER ANTENNA TV
- NA NURSE ASSIST CALL
- NC PATIENT NURSE CALL
- O2 OXYGEN
- RCD RESIDUAL CURRENT DEVICE
- S SUCTION
- SBB SUCTION BOTTLE BRACKET
- SK4 FLOOR VINYL COVED SKIRTING
- V1 VINYL FLOORING, STANDARD
- V6 VINYL FLOORING, TEXTURED



PLAN



ELEVATION 1

REV	DESCRIPTION	DATE	BY	REV	DESCRIPTION	DATE	BY	REV	DESCRIPTION	DATE	BY
1	FIRST ISSUE	24.2.14	AA								

	Indian Health Facility Guidelines	Indian Health Facility Guidelines at: www.healthdesign.com.au/ihfg Editable version of Standard Components on Health Facility Briefing System (HFBS) at: www.healthdesign.com.au Provided by TAHPI	DESIGNED CC/SYH	APPROVED AA/DB	DATE 24.2.14	SCALE(S) 1:50 in A3	SHEET 1 of 2
	CAD FILE NAME 2BR-ST-A-IN		PAPER DRAWING ID 2BR-ST-A-INa		ISSUE 1		

This document is for advisory purpose only

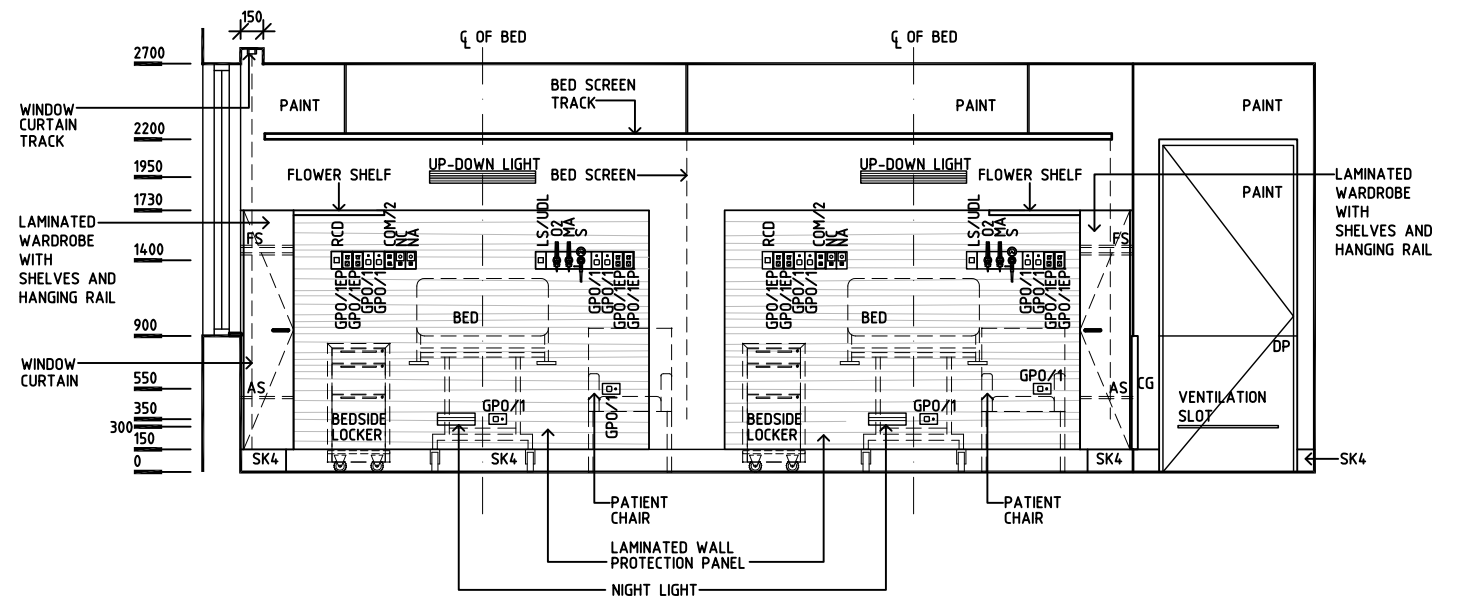
Indian HFG Standard Components

Room Layout Sheet

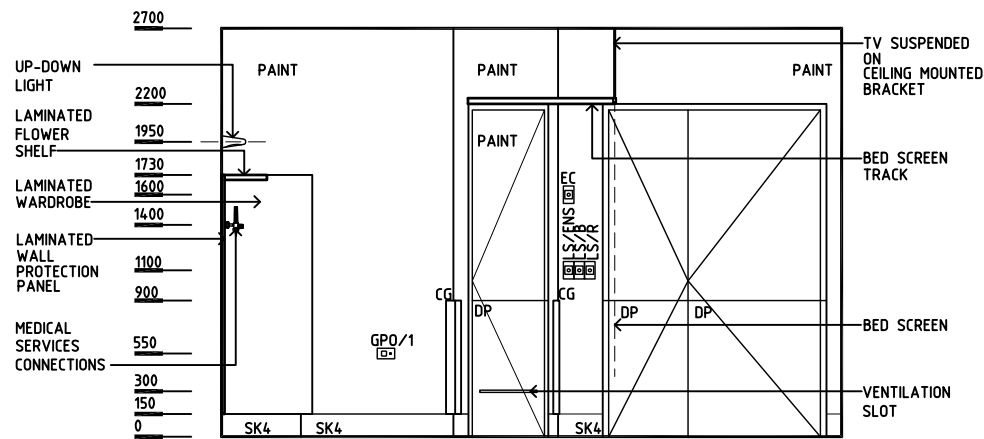
Room Name **2 Bed Room - Inboard Ensuite**

RLS Room Code **2BR-ST-A-IN**
RDS Room Code **2BR-ST-IN**

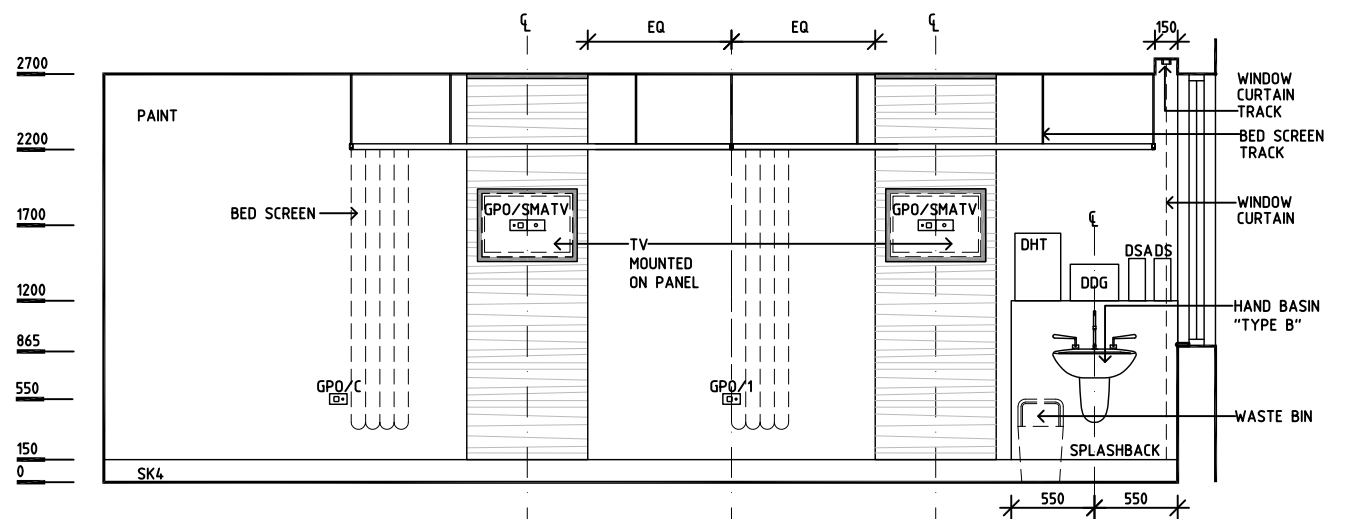
- AS ADJUSTABLE SHELF
- CG CORNER GUARD
- COM/2 COMMUNICATION OUTLET - DOUBLE
- DDG DISPENSER - DISPOSABLE GLOVES
- DHT DISPENSER - HAND TOWEL
- DP DOOR AND DOOR FRAME PROTECTION
- DS DISPENSER - SOAP
- DSA DISPENSER - SOAP ANTISEPTIC
- EC EMERGENCY CALL
- FS FIXED SHELF
- GPO/1 GENERAL PURPOSE OUTLET-SINGLE
- GPO/1EP EMERGENCY POWER - SINGLE
- GPO/C GENERAL PURPOSE OUTLET- CLEANER'S
- GPO/S SPECIAL PURPOSE OUTLET
- LS/B LIGHT SWITCH - BED
- LS/ENS LIGHT SWITCH - ENSUITE
- LS/R LIGHT SWITCH - ROOM
- LS/UDL LIGHT SWITCH - UP-DOWN LIGHT
- MA MEDICAL AIR
- MATV MASTER ANTENNA TV
- NA NURSE ASSIST CALL
- NC PATIENT NURSE CALL
- O2 OXYGEN
- RCD RESIDUAL CURRENT DEVICE
- S SUCTION
- SBB SUCTION BOTTLE BRACKET
- SK4 FLOOR VINYL COVERED SKIRTING
- V1 VINYL FLOORING, STANDARD
- V6 VINYL FLOORING, TEXTURED



ELEVATION 2



ELEVATION 3



ELEVATION 4

REV	DESCRIPTION	DATE	BY	REV	DESCRIPTION	DATE	BY	REV	DESCRIPTION	DATE	BY
1	FIRST ISSUE	24.2.14	AA								

<p>Indian Health Facility Guidelines</p>	Indian Health Facility Guidelines at: www.healthdesign.com.au/ihfg Editable version of Standard Components on Health Facility Briefing System (HFBS) at: www.healthdesign.com.au Provided by TAHPI		DESIGNED	APPROVED	DATE	SCALE(S)	SHEET
	CC/SYH	AA/DB	24.2.14	1:50 in A3	2 of 2		
	CAD FILE NAME		PAPER DRAWING ID		ISSUE		
2BR-ST-A-IN		2BR-ST-A-INb		1			

This document is for advisory purpose only

The Indian Health Facility Guidelines recommends the use of **HFBS** “**Health Facility Briefing System**” to edit all room data sheet information for your project.

HFBS provides edit access to all HFG India standard rooms, departments, and more than 40 report templates.

HFBS Health Facility Briefing System



Briefing Module

The Health Facility Briefing System (HFBS) has numerous modules available via annual subscription. It suits healthcare Architects, Medical Planners, Equipment Planners Project Managers and Health Authorities.

Use the HFBS Briefing Module to quickly drag in health facility departments or pre-configured room templates from the HFG standard, edit the room features such as finishes, furniture, fittings, fixtures, medical equipment, engineering services. The system can print or download as PDF more than 100 custom reports including room data sheets, schedules, and more...

To learn more about the HFBS web-based Healthcare Briefing and Design Software and to obtain editable versions of the “Standard Components” including Room Data Sheets (RDS) and Room Layout Sheets (RLS) offered on the HFG website, signup for HFBS using the link below.

Get Started Now:
hfbs.healthdesign.com.au

- ✓ HFG India Room Data Sheets and Departments are instantly editable in the HFBS software available online in the HFBS India Domain.
- ✓ You can access hundreds of report templates to print your HFG India room data in HFBS.
- ✓ HFBS has a onetime free 3 day trial available to all new users – signup for the HFBS India Domain today.

Get Started Now:
hfbs.healthdesign.com.au



HFBS

Health Facility Briefing System

hfbsinfo.com | techsupport@healthdesign.com.au

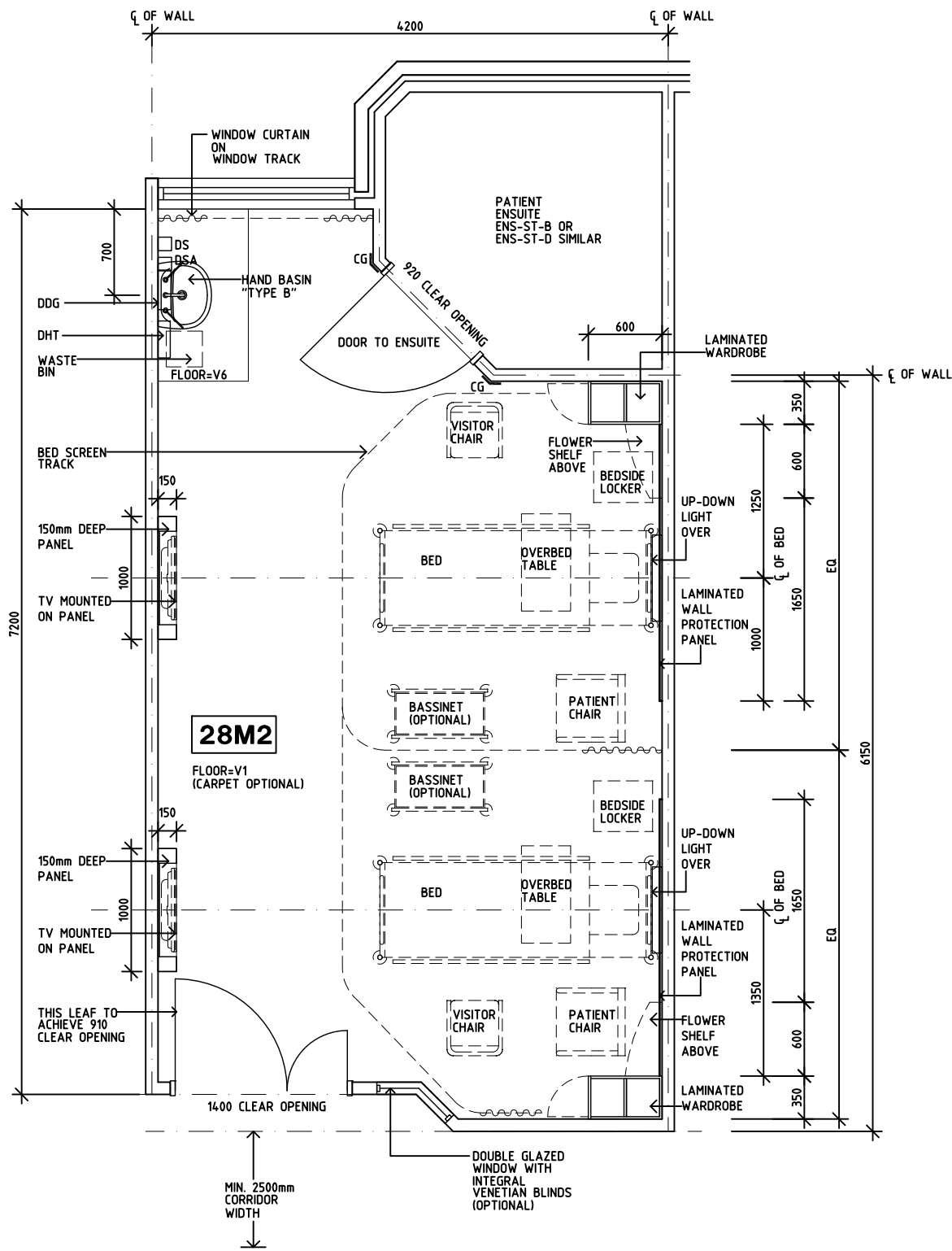
Indian HFG Standard Components

Room Layout Sheet

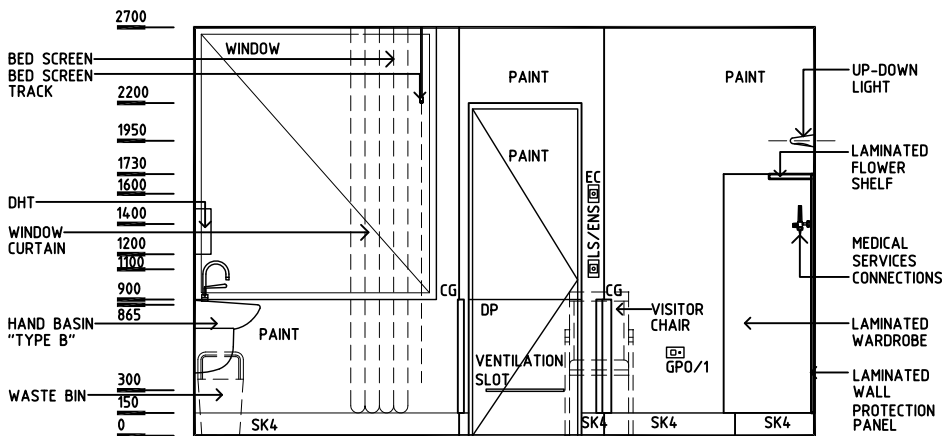
Room Name **2 Bed Room - Outboard Ensuite**

RLS Room Code **2BR-ST-B-IN**
RDS Room Code **2BR-ST-IN**

- AS ADJUSTABLE SHELF
- CG CORNER GUARD
- COM/2 COMMUNICATION OUTLET - DOUBLE
- DDG DISPENSER - DISPOSABLE GLOVES
- DHT DISPENSER - HAND TOWEL
- DS DISPENSER - SOAP
- DSA DISPENSER - SOAP ANTISEPTIC
- DP DOOR AND DOOR FRAME PROTECTION
- EC EMERGENCY CALL
- FS FIXED SHELF
- GPO/1 GENERAL PURPOSE OUTLET-SINGLE
- GPO/1EP EMERGENCY POWER - SINGLE
- GPO/C GENERAL POWER OUTLET - CLEANER'S
- GPO/S SPECIAL PURPOSE OUTLET
- LS/B LIGHT SWITCH - BED
- LS/ENS LIGHT SWITCH - ENSUITE
- LS/R LIGHT SWITCH - ROOM
- LS/UDL LIGHT SWITCH - UP-DOWN LIGHT
- MA MEDICAL AIR
- MATV MASTER ANTENNA TV
- NA NURSE ASSIST CALL
- NC PATIENT NURSE CALL
- O2 OXYGEN
- RCD RESIDUAL CURRENT DEVICE
- S SUCTION
- SBB SUCTION BOTTLE BRACKET
- SK4 FLOOR VINYL COVERED SKIRTING
- V1 VINYL FLOORING, STANDARD
- V6 VINYL FLOORING, TEXTURED



PLAN



ELEVATION 1

REV	DESCRIPTION	DATE	BY	REV	DESCRIPTION	DATE	BY	REV	DESCRIPTION	DATE	BY
1	FIRST ISSUE	24.2.2014	AA								

	Indian Health Facility Guidelines Indian Health Facility Guidelines at: www.healthdesign.com.au/ihfg Editable version of Standard Components on Health Facility Briefing System (HFBS) at: www.healthdesign.com.au Provided by TAHPI	DESIGNED	APPROVED	DATE	SCALE(S)	SHEET
		CC/SYH	AA/DB	24.2.2014	1:50 in A3	1 of 2
		CAD FILE NAME		PAPER DRAWING ID		ISSUE
2BR-ST-B-IN		2BR-ST-B-INa		1		

Indian HFG Standard Components

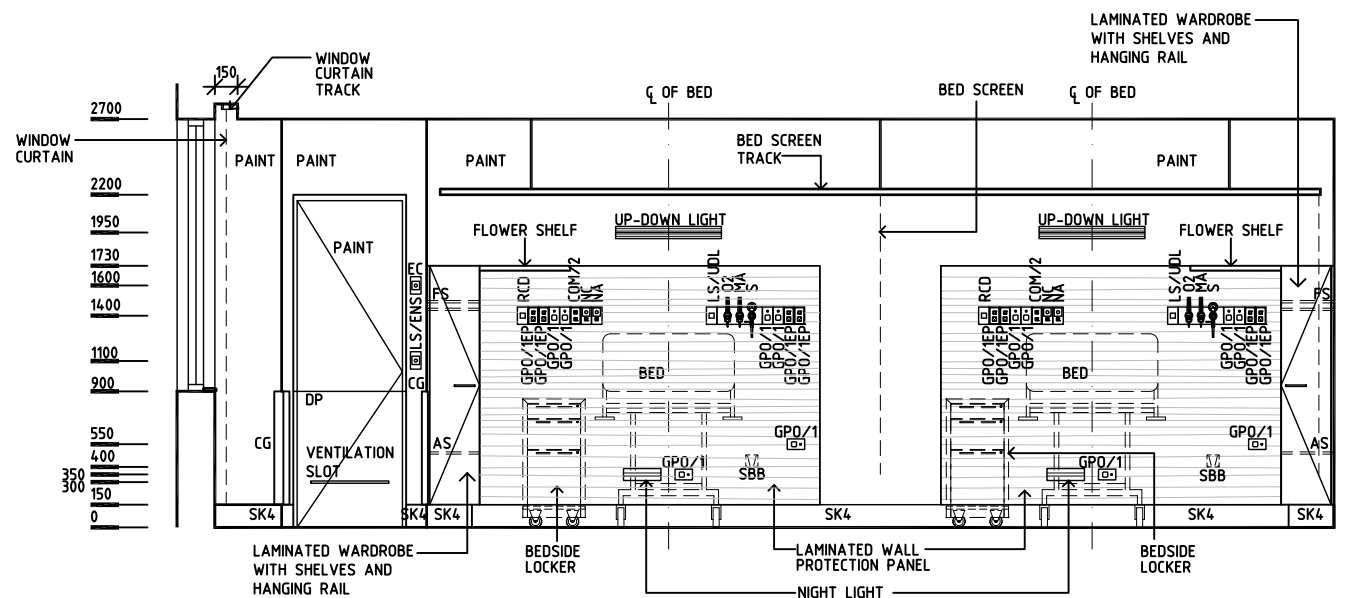
Room Layout Sheet

Room Name **2 Bed Room - Outboard Ensuite**

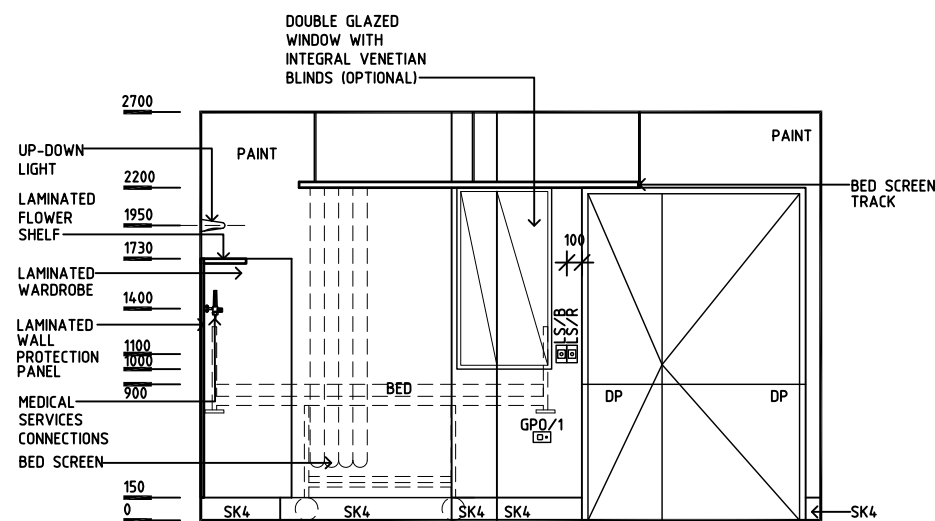
RLS Room Code **2BR-ST-B-IN**

RDS Room Code **2 BR-ST-IN**

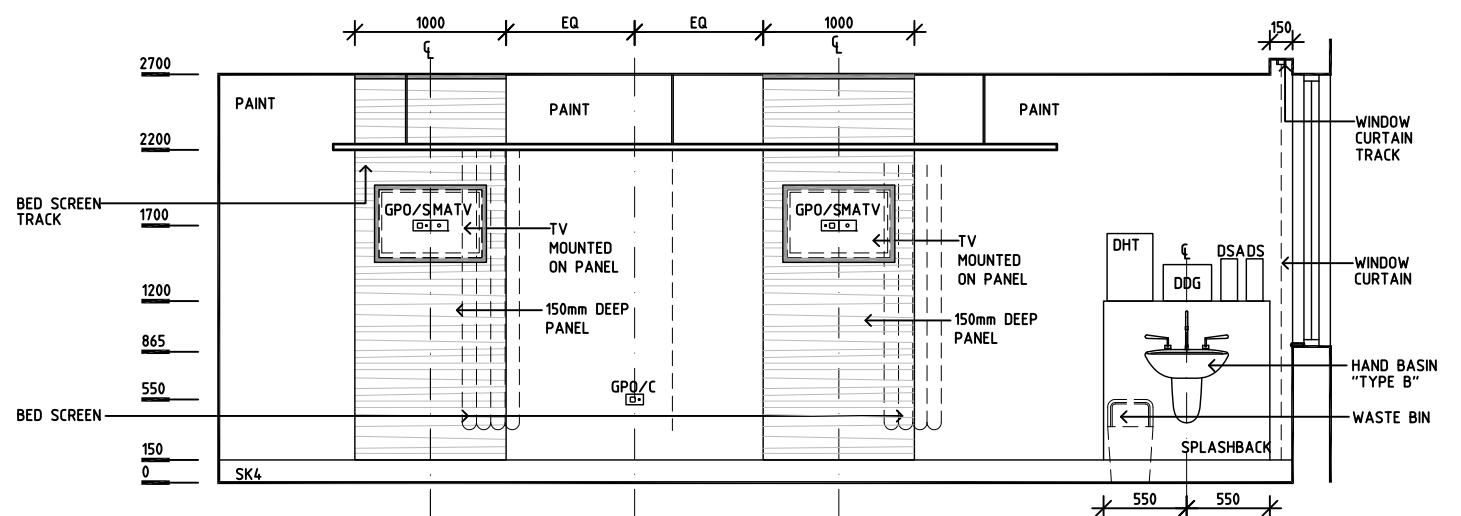
- AS ADJUSTABLE SHELF
- CG CORNER GUARD
- COM/2 COMMUNICATION OUTLET - DOUBLE
- DDG DISPENSER - DISPOSABLE GLOVES
- DHT DISPENSER - HAND TOWEL
- DS DISPENSER - SOAP
- DSA DISPENSER - SOAP ANTISEPTIC
- DP DOOR AND DOOR FRAME PROTECTION
- EC EMERGENCY CALL
- FS FIXED SHELF
- GPO/1 GENERAL PURPOSE OUTLET-SINGLE
- GPO/1EP EMERGENCY POWER - SINGLE
- GPO/C GENERAL POWER OUTLET - CLEANER'S
- GPO/S SPECIAL PURPOSE OUTLET
- LS/B LIGHT SWITCH - BED
- LS/ENS LIGHT SWITCH - ENSUITE
- LS/R LIGHT SWITCH - ROOM
- LS/UDL LIGHT SWITCH - UP-DOWN LIGHT
- MA MEDICAL AIR
- MATV MASTER ANTENNA TV
- NA NURSE ASSIST CALL
- NC PATIENT NURSE CALL
- O2 OXYGEN
- RCD RESIDUAL CURRENT DEVICE
- S SUCTION
- SBB SUCTION BOTTLE BRACKET
- SK4 FLOOR VINYL COVERED SKIRTING
- V1 VINYL FLOORING, STANDARD
- V6 VINYL FLOORING, TEXTURED



ELEVATION 2




ELEVATION 3



ELEVATION 4

REV	DESCRIPTION	DATE	BY	REV	DESCRIPTION	DATE	BY	REV	DESCRIPTION	DATE	BY
1	FIRST ISSUE	24.2.2014	AA								

 Indian Health Facility Guidelines	Indian Health Facility Guidelines at: www.healthdesign.com.au/ihfg Editable version of Standard Components on Health Facility Briefing System (HFBS) at: www.healthdesign.com.au Provided by TAHPI		DESIGNED	APPROVED	DATE	SCALE(S)	SHEET
	CC/SYH	AA/DB	24.2.2014	1:50 in A3	2 of 2		
	CAD FILE NAME		PAPER DRAWING ID		ISSUE		
2BR-ST-B-IN		2BR-ST-B-INb		1			

The Indian Health Facility Guidelines recommends the use of **HFBS** “**Health Facility Briefing System**” to edit all room data sheet information for your project.

HFBS provides edit access to all HFG India standard rooms, departments, and more than 40 report templates.

HFBS Health Facility Briefing System



Briefing Module

The Health Facility Briefing System (HFBS) has numerous modules available via annual subscription. It suits healthcare Architects, Medical Planners, Equipment Planners Project Managers and Health Authorities.

Use the HFBS Briefing Module to quickly drag in health facility departments or pre-configured room templates from the HFG standard, edit the room features such as finishes, furniture, fittings, fixtures, medical equipment, engineering services. The system can print or download as PDF more than 100 custom reports including room data sheets, schedules, and more...

To learn more about the HFBS web-based Healthcare Briefing and Design Software and to obtain editable versions of the “Standard Components” including Room Data Sheets (RDS) and Room Layout Sheets (RLS) offered on the HFG website, signup for HFBS using the link below.

Get Started Now:
hfbs.healthdesign.com.au

- ✓ HFG India Room Data Sheets and Departments are instantly editable in the HFBS software available online in the HFBS India Domain.
- ✓ You can access hundreds of report templates to print your HFG India room data in HFBS.
- ✓ HFBS has a onetime free 3 day trial available to all new users – signup for the HFBS India Domain today.

Get Started Now:
hfbs.healthdesign.com.au



HFBS

Health Facility Briefing System

hfbsinfo.com | techsupport@healthdesign.com.au

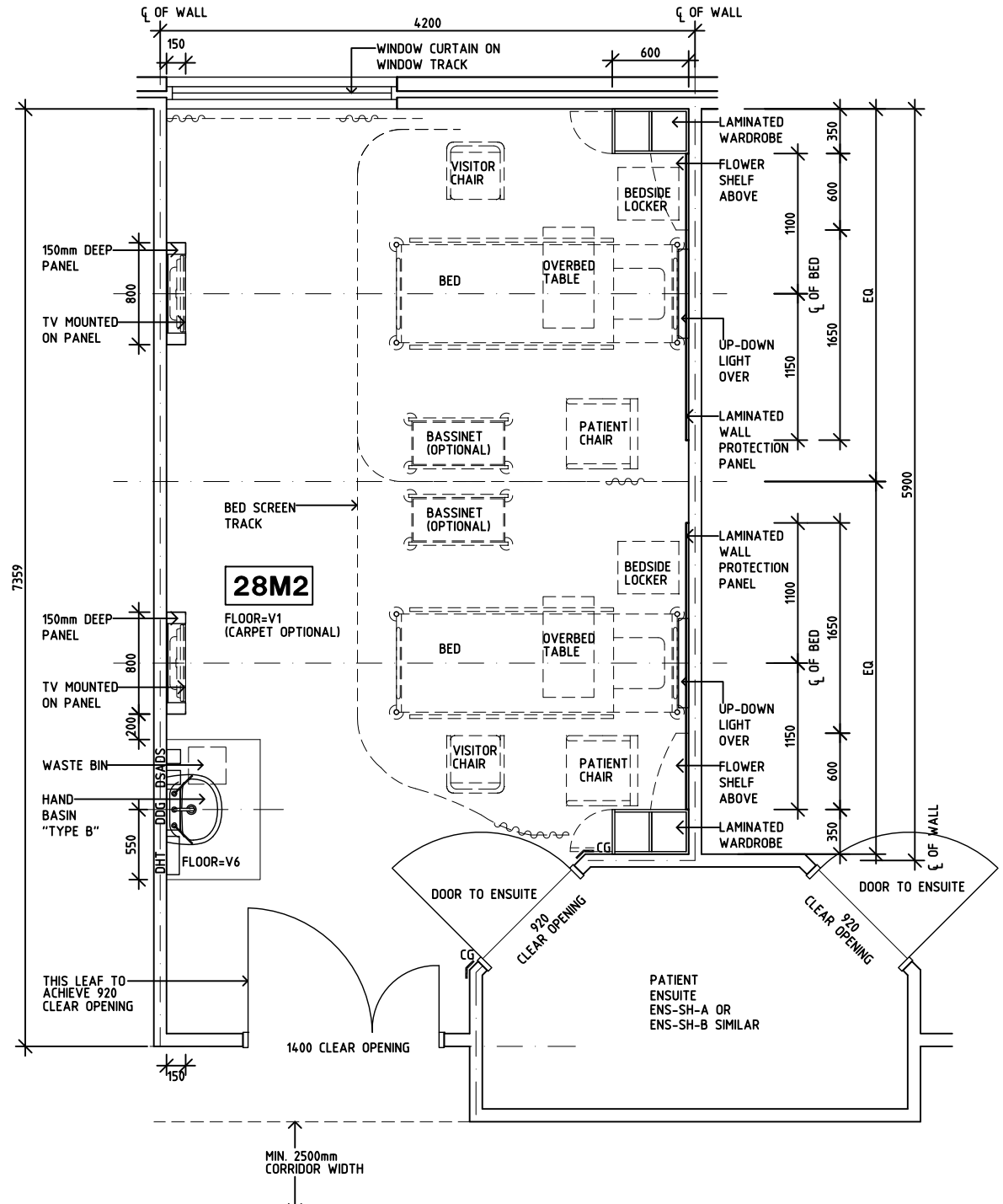
Indian HFG Standard Components

Room Layout Sheet

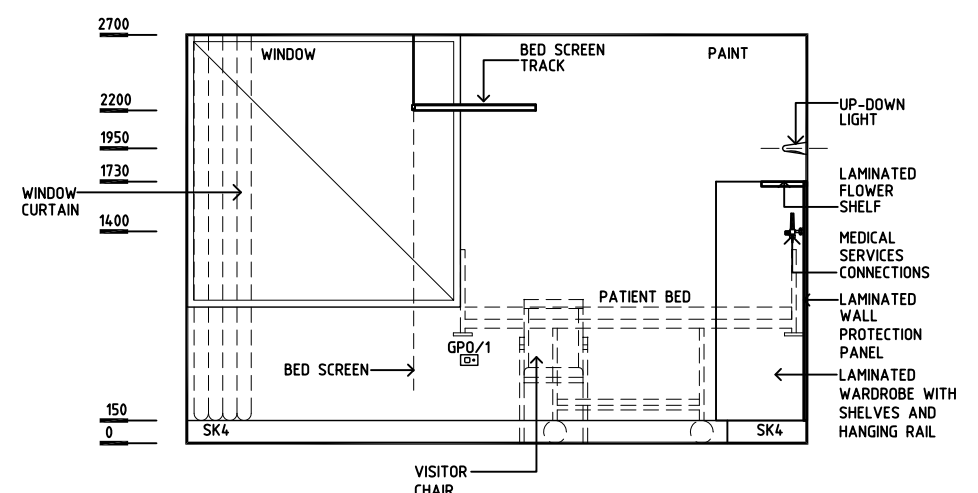
Room Name **2 Bed Room - Shared Ensuite**

RLS Room Code **2BR-ST-C-IN**
RDS Room Code **2BR-ST-IN**

- AS ADJUSTABLE SHELF
- CG CORNER GUARD
- COM/2 COMMUNICATION OUTLET - DOUBLE
- DDG DISPENSER - DISPOSABLE GLOVES
- DHT DISPENSER - HAND TOWEL
- DS DISPENSER - SOAP
- DSA DISPENSER - SOAP ANTISEPTIC
- DP DOOR AND DOOR FRAME PROTECTION
- EC EMERGENCY CALL
- FS FIXED SHELF
- GPO/1 GENERAL PURPOSE OUTLET-SINGLE
- GPO/1EP EMERGENCY POWER - SINGLE
- GPO/C GENERAL POWER OUTLET - CLEANER'S
- GPO/S SPECIAL PURPOSE OUTLET
- LS/B LIGHT SWITCH - BED
- LS/ENS LIGHT SWITCH - ENSUITE
- LS/R LIGHT SWITCH - ROOM
- LS/UDL LIGHT SWITCH - UP-DOWN LIGHT
- MA MEDICAL AIR
- MATV MASTER ANTENNA TV
- NA NURSE ASSIST CALL
- NC PATIENT NURSE CALL
- O2 OXYGEN
- RCD RESIDUAL CURRENT DEVICE
- S SUCTION
- SBB SUCTION BOTTLE BRACKET
- SK4 FLOOR VINYL COVED SKIRTING
- V1 VINYL FLOORING, STANDARD
- V6 VINYL FLOORING, TEXTURED



PLAN



ELEVATION 1

REV	DESCRIPTION	DATE	BY	REV	DESCRIPTION	DATE	BY	REV	DESCRIPTION	DATE	BY
1	FIRST ISSUE	24.2.2014	AA								

	Indian Health Facility Guidelines	Indian Health Facility Guidelines at: www.healthdesign.com.au/infhg Editable version of Standard Components on Health Facility Briefing System (HFBS) at: www.healthdesign.com.au Provided by TAHPI		DESIGNED	APPROVED	DATE	SCALE(S)	SHEET
		CC/SYH	AA/DB	24.2.2014	1:50 in A3	1 of 2		
		CAD FILE NAME		PAPER DRAWING ID		ISSUE		
2BR-ST-C-IN		2BR-ST-C-INa		1				

This document is for advisory purpose only

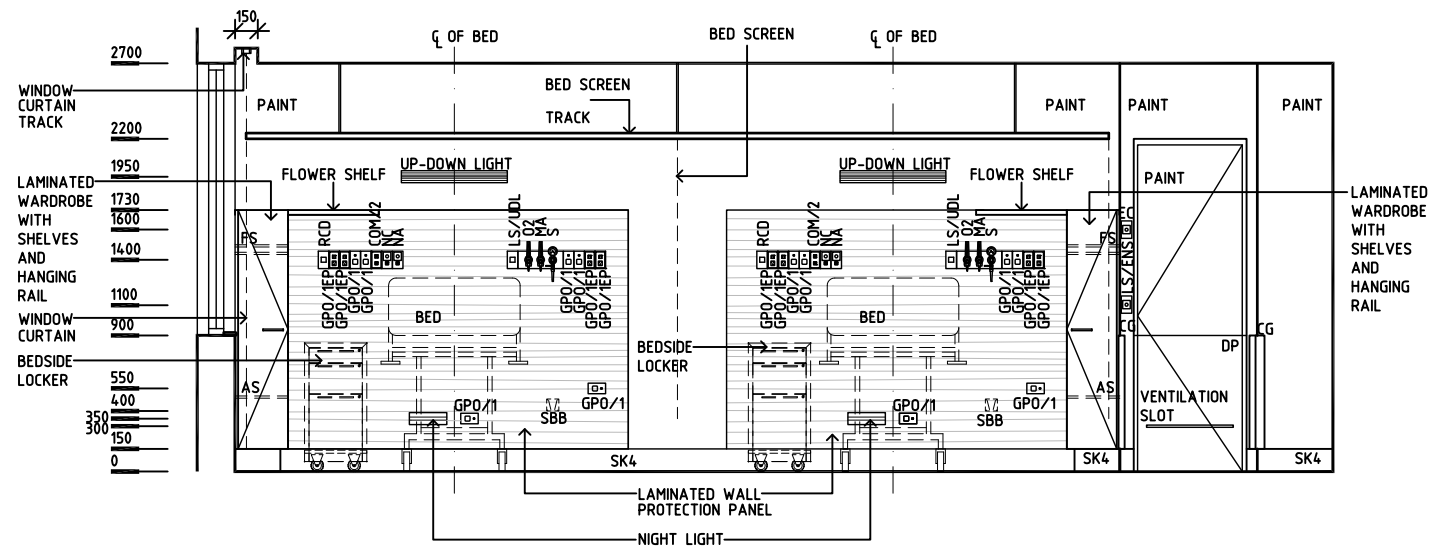
Indian HFG Standard Components

Room Layout Sheet

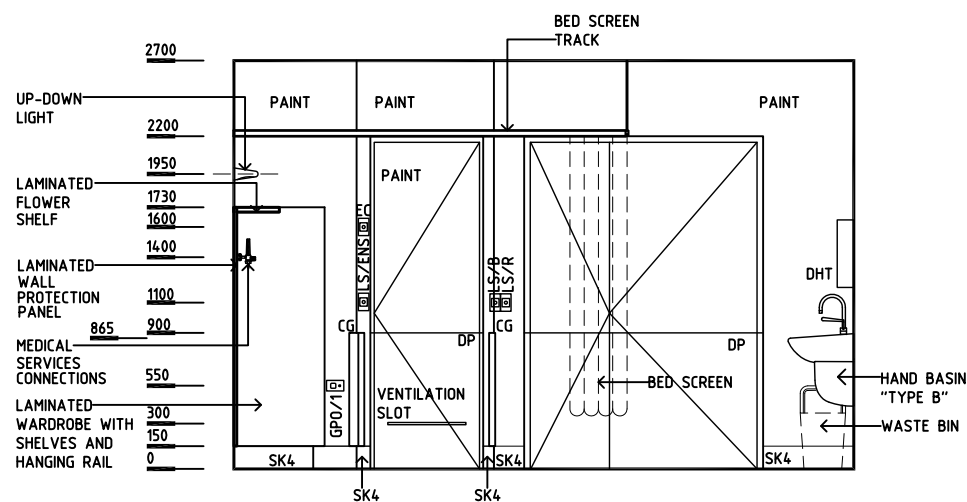
Room Name | 2 Bed Room - Shared Ensuite

RLS Room Code 2BR-ST-C-IN
RDS Room Code 2BR-ST-IN

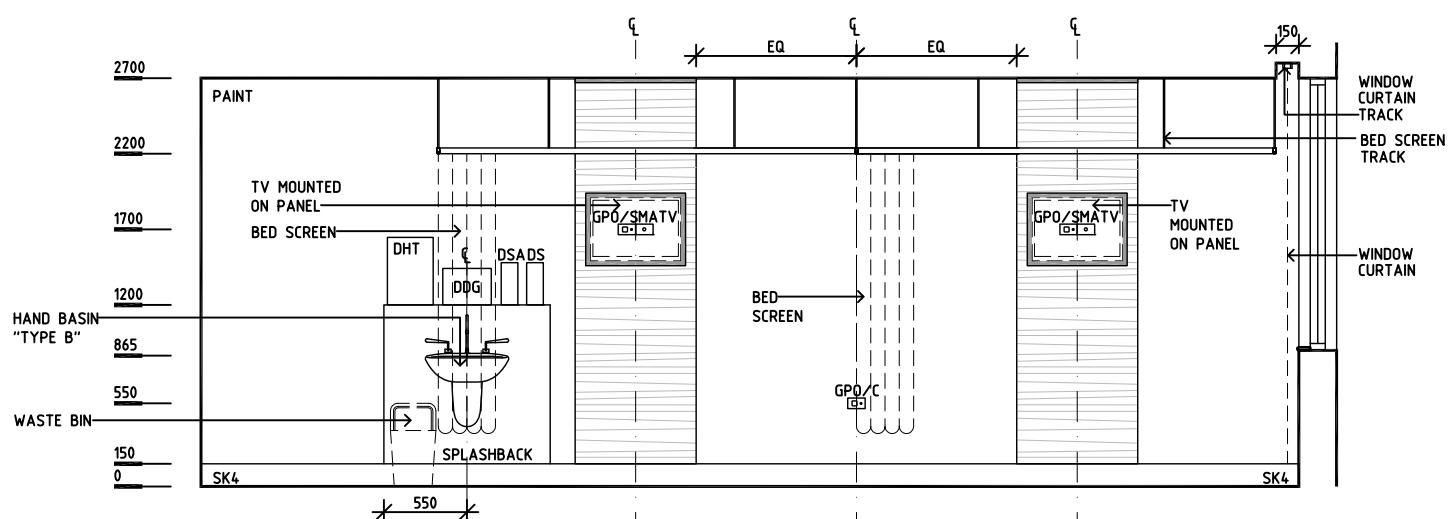
- AS ADJUSTABLE SHELF
- CG CORNER GUARD
- COM/2 COMMUNICATION OUTLET - DOUBLE
- DDG DISPENSER - DISPOSABLE GLOVES
- DHT DISPENSER - HAND TOWEL
- DS DISPENSER - SOAP
- DSA DISPENSER - SOAP ANTISEPTIC
- DP DOOR AND DOOR FRAME PROTECTION
- EC EMERGENCY CALL
- FS FIXED SHELF
- GPO/1 GENERAL PURPOSE OUTLET-SINGLE
- GPO/1EP EMERGENCY POWER - SINGLE
- GPO/C GENERAL POWER OUTLET - CLEANER'S
- GPO/S SPECIAL PURPOSE OUTLET
- LS/B LIGHT SWITCH - BED
- LS/ENS LIGHT SWITCH - ENSUITE
- LS/R LIGHT SWITCH - ROOM
- LS/UDL LIGHT SWITCH - UP-DOWN LIGHT
- MA MEDICAL AIR
- MATV MASTER ANTENNA TV
- NA NURSE ASSIST CALL
- NC PATIENT NURSE CALL
- O2 OXYGEN
- RCD RESIDUAL CURRENT DEVICE
- S SUCTION
- SBB SUCTION BOTTLE BRACKET
- SK4 FLOOR VINYL COVED SKIRTING
- V1 VINYL FLOORING, STANDARD
- V6 VINYL FLOORING, TEXTURED



ELEVATION 2




ELEVATION 3



ELEVATION 4

REV	DESCRIPTION	DATE	BY	REV	DESCRIPTION	DATE	BY	REV	DESCRIPTION	DATE	BY
1	FIRST ISSUE	24.2.2014	AA								

 Indian Health Facility Guidelines	Indian Health Facility Guidelines at: www.healthdesign.com.au/ihfg Editable version of Standard Components on Health Facility Briefing System (HFBS) at: www.healthdesign.com.au Provided by TAHPI		DESIGNED	APPROVED	DATE	SCALE(S)	SHEET
	CC/SYH	AA/DB	24.2.2014	1:50 in A3	2 of 2		
	CAD FILE NAME		PAPER DRAWING ID		ISSUE		
2BR-ST-C-IN		2BR-ST-C-INb		1			

This document is for advisory purpose only

The Indian Health Facility Guidelines recommends the use of **HFBS** “**Health Facility Briefing System**” to edit all room data sheet information for your project.

HFBS provides edit access to all HFG India standard rooms, departments, and more than 40 report templates.

HFBS Health Facility Briefing System



Briefing Module

The Health Facility Briefing System (HFBS) has numerous modules available via annual subscription. It suits healthcare Architects, Medical Planners, Equipment Planners Project Managers and Health Authorities.

Use the HFBS Briefing Module to quickly drag in health facility departments or pre-configured room templates from the HFG standard, edit the room features such as finishes, furniture, fittings, fixtures, medical equipment, engineering services. The system can print or download as PDF more than 100 custom reports including room data sheets, schedules, and more...

To learn more about the HFBS web-based Healthcare Briefing and Design Software and to obtain editable versions of the “Standard Components” including Room Data Sheets (RDS) and Room Layout Sheets (RLS) offered on the HFG website, signup for HFBS using the link below.

Get Started Now:
hfbs.healthdesign.com.au

- ✓ HFG India Room Data Sheets and Departments are instantly editable in the HFBS software available online in the HFBS India Domain.
- ✓ You can access hundreds of report templates to print your HFG India room data in HFBS.
- ✓ HFBS has a onetime free 3 day trial available to all new users – signup for the HFBS India Domain today.

Get Started Now:
hfbs.healthdesign.com.au



HFBS

Health Facility Briefing System

hfbsinfo.com | techsupport@healthdesign.com.au

Department	Indian Health Facility Guidelines	Room Tag:	1080
Room Name	2 Bed Room - Standard, 28m2	Room Code:	2BR-ST-28-IN

Net Room Area Briefed	28.0 M2
No of Rooms	1
Subtotal of Briefed Area	28.00 M2
Hours of Operation	24 Hours
Occupancy	Up to 2 patients; 1-2 visitors each; 1-2 staff

Also covers these Rooms

Description/ Special Requirements

A 2 Bed Room will accommodate two patients with similar nursing needs for the delivery of nursing and medical care. Each space will be individually curtained and allow for treatment of patients either in bed or sitting beside the bed in a comfortable chair; natural light and outlook is essential; patients require the ability to view out of the window from either the chair or bed. The room may also be used for obstetric care, either pre or post natal, and may include bassinets.

Each room is to have direct access to Ensuite toilet and shower facilities and the Unit corridor. The room layout is to allow movement of equipment around bedspaces.

The 2 Bed Room may vary in configuration to suit different Ensuite options including:

- 2 BR-ST-A-U Inboard Ensuite
- 2 BR-ST-B-U Outboard Ensuite
- 2 BR-ST-C-U Shared Ensuite

Acoustics: Acoustic privacy is required.

Body Protected Electrical Area

Amendment

05.03.2014 First Issue

Room Fabric and outline specifications

ID	Fabric	Material	Finish	Specification	Selection	Remarks
5010	Ceiling	Plasterboard	Paint, washable	Flush set, suspended		
6025	Cornice	Aluminium	Powdercoat	shadow line		
8010	Door protection	Composite	Prefinished PVC	Protection plate to 900 AFFL		
8040	Door protection	Composite	Prefinished PVC	To door frame		
9125	Doors	Solid Core/ Glass	Paint	1 1/2 leaf, observation panel		1400mm clear opening
1000	Floor finish	Vinyl	Standard slip resistant	Seamless, coved		Carpet also acceptable
1045	Floor finish	Vinyl, non slip	Textured	Seamless, coved		under basin
7030	Observation	Alum/ Glass	Powdercoat	Internal window, door height		with integral blinds, optional to outboard ensuite rooms

Department Indian Health Facility Guidelines
Room Name 2 Bed Room - Standard, 28m2

Room Tag: 1080
Room Code: 2BR-ST-28-IN

ID	Fabric	Material	Finish	Specification	Selection	Remarks
2000	Skirting	Vinyl	Prefinished	Floor vinyl coved, 150 mmH		timber skirting if carpeted
3067	Wall finish	Laminate	Prefinished			wall panels
3000	Wall finish	Paint	Acrylic, washable			
3022	Wall finish	Resinate, 6mm	Prefinished	Splashback		to basin
3092	Wall protection	MDF	Laminate	Bed protection wall panel		
4045	Wall protection	Timber	Clear finish	Corner guards		Where required
7001	Windows					Natural light & outlook essential.

Fittings and Furniture (FF)

ID	Description	Category	Group	Qty	Selection / Remarks
150	Air flowmeter	Furniture/ Fitting	3	2	Medical air
480	Bassinet	Furniture/ Fitting	3	2	optional, if used for post-natal care
1252	Blind: Venetian integral	Furniture/ Fitting	1	1	optional; to internal window if provided
1465	Bracket: suction bottle	Furniture/ Fitting	2	2	
23410	Bracket: television, wall mount	Metalwork	2	2	flat screen TVs
2150	Chair: patient	Furniture/ Fitting	3	2	
2650	Chair: visitor, patient	Furniture/ Fitting	3	2	
4330	Cupboard: wardrobe	Furniture/ Fitting	1	2	
4600	Curtain track: bed screen	Metalwork	1	2	
4900	Curtain track: window	Metalwork	1	1	
5000	Curtain: bed screen	Furniture/ Fitting	3	2	
5410	Curtain: window, drapes	Furniture/ Fitting	3	1	set
6152	Dispenser: disposable glove	Furniture/ Fitting	2	1	near basin
6154	Dispenser: paper/ hand towel	Furniture/ Fitting	2	1	to basin
6156	Dispenser: soap	Furniture/ Fitting	2	1	to basin
6158	Dispenser: soap antiseptic	Furniture/ Fitting	2	1	to basin
12450	Locker: bedside	Furniture/ Fitting	3	2	mobile, 2 lockable top drawers
16250	Oxygen flowmeter	Furniture/ Fitting	3	2	
19800	Shelf: laminate	Furniture/ Fitting	1	2	for flowers
21950	Suction adapter	Furniture/ Fitting	3	2	
22000	Suction bottle	Furniture/ Fitting	3	2	
16200	Table: overbed	Furniture/ Fitting	3	2	
24100	Waste bin: paper, 20 Litre	Furniture/ Fitting	3	1	to basin

Fixtures, Equipment and associated Services (FE)

ID	Description	Group	Qty	Ele	Data	CdW	HtW	WmW	Tap	Dns	Gas	Selection / Remarks
2800	Basin: handwash, Type B	1	1	___	___	yes	___	yes	yes	yes	___	elbow action levers
3700	Bed: inpatient, electric	3	2	yes	___	___	___	___	___	___	___	
54510	Telephone: handset, standard	3	2	___	yes	___	___	___	___	___	___	
3031	Television: flat screen	3	2	yes	___	___	___	___	___	___	___	wall mounted

Services

Department Indian Health Facility Guidelines
Room Name 2 Bed Room - Standard, 28m2

Room Tag: 1080
Room Code: 2BR-ST-28-IN

ID	Description	Service Category	Qty	Selection / Remarks
1090	TV: MATV	Communications	2	1 / bed
1006	Voice / Data outlet: double	Communications	2	1 / bed; one outlet for telephone, each bed
5000	Airconditioning	HVAC		
6001	General: colour corrected	Lighting		
6060	Special: night lights	Lighting		
6050	Special: reading	Lighting	2	Up/down light
7020	Medical Air (MA)	Medical Gases	2	1 / bed
7000	Oxygen (O2)	Medical Gases	2	1 / bed
7040	Suction	Medical Gases	2	1 / bed
8080	Emergency call	Nurse Call	1	+ indicator button & light
8005	Patient call handset	Nurse Call	2	call button & light switch on the handset
8000	Patient/ Staff call	Nurse Call	2	+ indicator button & light
8010	Staff/ Nurse assist call	Nurse Call	2	+ indicator button & light
9040	Body protected	Power		
9015	GPO: Cleaner	Power	1	
9010	GPO: Emergency power, single	Power	8	4 / bed
9000	GPO: Single	Power	8	4 / bed
9000	GPO: Single	Power	4	1 adjacent to each patient chair; 2 on walls
9000	GPO: Single	Power	2	Bedhead low level, for electric bed/s
9060	GPO: Special: for equipment	Power	2	TVs



The Indian Health Facility Guidelines recommends the use of **HFBS** “**Health Facility Briefing System**” to edit all room data sheet information for your project.

HFBS provides edit access to all HFG India standard rooms, departments, and more than 40 report templates.

HFBS Health Facility Briefing System



Briefing Module

The Health Facility Briefing System (HFBS) has numerous modules available via annual subscription. It suits healthcare Architects, Medical Planners, Equipment Planners Project Managers and Health Authorities.

Use the HFBS Briefing Module to quickly drag in health facility departments or pre-configured room templates from the HFG standard, edit the room features such as finishes, furniture, fittings, fixtures, medical equipment, engineering services. The system can print or download as PDF more than 100 custom reports including room data sheets, schedules, and more...

To learn more about the HFBS web-based Healthcare Briefing and Design Software and to obtain editable versions of the “Standard Components” including Room Data Sheets (RDS) and Room Layout Sheets (RLS) offered on the HFG website, signup for HFBS using the link below.

Get Started Now:
hfbs.healthdesign.com.au

- ✓ HFG India Room Data Sheets and Departments are instantly editable in the HFBS software available online in the HFBS India Domain.
- ✓ You can access hundreds of report templates to print your HFG India room data in HFBS.
- ✓ HFBS has a onetime free 3 day trial available to all new users – signup for the HFBS India Domain today.

Get Started Now:
hfbs.healthdesign.com.au



HFBS

Health Facility Briefing System

hfbsinfo.com | techsupport@healthdesign.com.au

Indian HFG Standard Components

Room Layout Sheet

Room Name **ADL Bed Room**

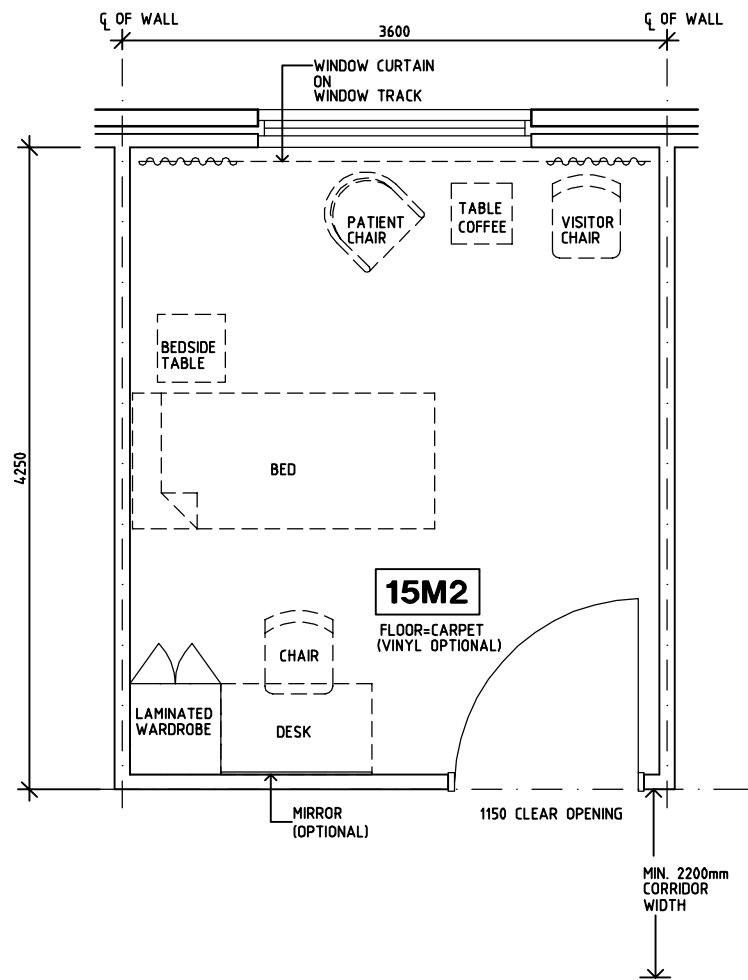
RLS Room Code

ADLBR-IN

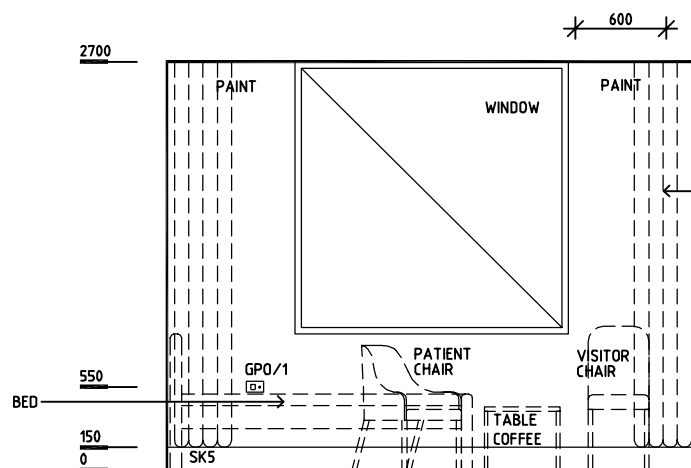
RDS Room Code

ADLBR-IN

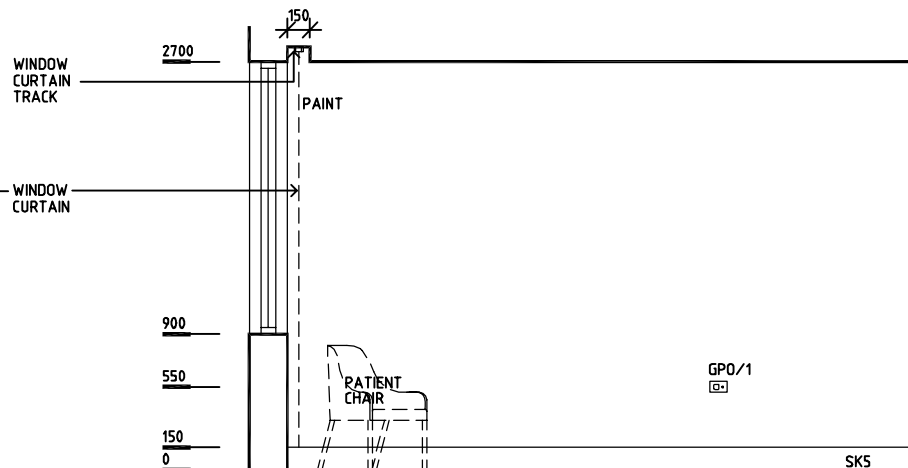
- AS ADJUSTABLE SHELF
- DP DOOR AND DOOR FRAME PROTECTION
- FS FIXED SHELF
- GPO/1 GENERAL PURPOSE OUTLET- SINGLE
- GPO/C GENERAL PURPOSE OUTLET- CLEANER'S
- LS/R LIGHT SWITCH - ROOM
- LS/RL LIGHT SWITCH - READING LIGHT
- NC PATIENT/NURSE CALL
- NA NURSE ASSIST CALL
- RCD RESIDUAL CURRENT DEVICE
- SK5 FEATHER EDGE VINYL SKIRTING



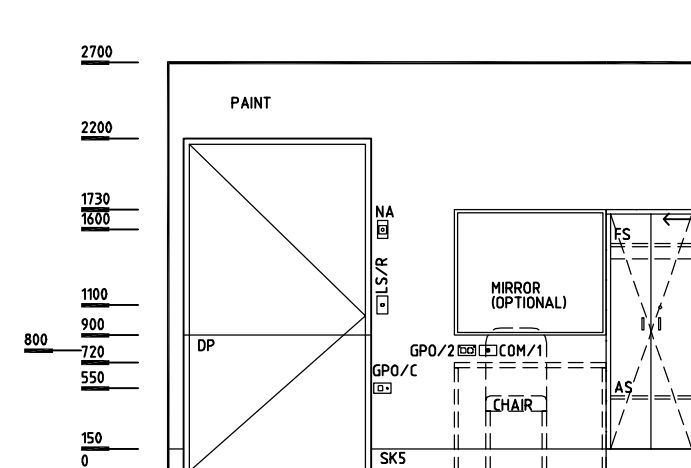
PLAN



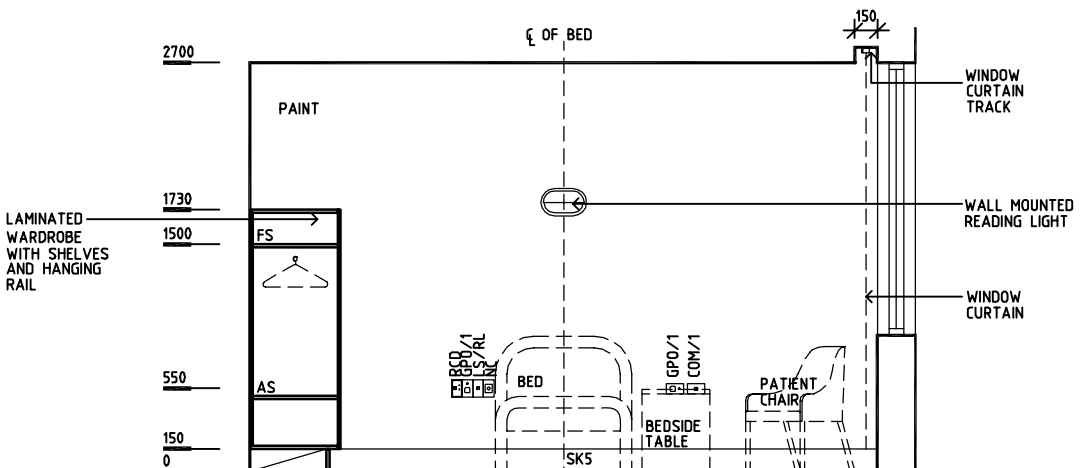
ELEVATION 1



ELEVATION 2



ELEVATION 3



ELEVATION 4

REV	DESCRIPTION	DATE	BY	REV	DESCRIPTION	DATE	BY	REV	DESCRIPTION	DATE	BY
1	FIRST ISSUE	24.02.2014	AA								

	Indian Health Facility Guidelines	Indian Health Facility Guidelines at: www.healthdesign.com.au/infhg Editable version of Standard Components on Health Facility Briefing System (HFBS) at: www.healthdesign.com.au Provided by TAHPI	DESIGNED CC	APPROVED DB	DATE 24.10.10	SCALE(S) 1:50 in A3	SHEET 1 of 1
	CAD FILE NAME ADLBR-IN		PAPER DRAWING ID ADLBR-IN		ISSUE 1		

This document is for advisory purpose only

The Indian Health Facility Guidelines recommends the use of **HFBS** “Health Facility Briefing System” to edit all room data sheet information for your project.

HFBS provides edit access to all HFG India standard rooms, departments, and more than 40 report templates.

HFBS Health Facility Briefing System



Briefing Module

The Health Facility Briefing System (HFBS) has numerous modules available via annual subscription. It suits healthcare Architects, Medical Planners, Equipment Planners Project Managers and Health Authorities.

Use the HFBS Briefing Module to quickly drag in health facility departments or pre-configured room templates from the HFG standard, edit the room features such as finishes, furniture, fittings, fixtures, medical equipment, engineering services. The system can print or download as PDF more than 100 custom reports including room data sheets, schedules, and more...

To learn more about the HFBS web-based Healthcare Briefing and Design Software and to obtain editable versions of the “Standard Components” including Room Data Sheets (RDS) and Room Layout Sheets (RLS) offered on the HFG website, signup for HFBS using the link below.

Get Started Now:
hfbs.healthdesign.com.au

- ✓ HFG India Room Data Sheets and Departments are instantly editable in the HFBS software available online in the HFBS India Domain.
- ✓ You can access hundreds of report templates to print your HFG India room data in HFBS.
- ✓ HFBS has a onetime free 3 day trial available to all new users – signup for the HFBS India Domain today.

Get Started Now:
hfbs.healthdesign.com.au



HFBS

Health Facility Briefing System

hfbsinfo.com | techsupport@healthdesign.com.au

Department	Indian Health Facility Guidelines	Room Tag:	1120
Room Name	ADL Bed Room	Room Code:	ADLBR-IN
Net Room Area Briefed	15.0 M2		
No of Rooms	1		
Subtotal of Briefed Area	15.00 M2		
Hours of Operation	8am to 6pm, intermittent use		
Occupancy	1 patient; 1-2 staff		
Also covers these Rooms			
Description/ Special Requirements	<p>Single Bed Room for Activities of Daily Living patient assessment and training; natural light and outlook is desirable; The room is to be lockable. The room furnishings will be domestic style to mimic home conditions.</p> <p>Acoustics: Acoustic privacy is required.</p> <p>Body Protected Electrical Area</p>		
Amendment	05.03.2014 First Issue		

Room Fabric and outline specifications

ID	Fabric	Material	Finish	Specification	Selection	Remarks
5010	Ceiling	Plasterboard	Paint, washable	Flush set, suspended		
6025	Cornice	Aluminium	Powdercoat	shadow line		
8010	Door protection	Composite	Prefinished PVC	Protection plate to 900 AFFL		
8040	Door protection	Composite	Prefinished PVC	To door frame		
9001	Doors	Solid Core	Paint	Single leaf		1150mm clear opening, lockable
1149	Floor finish	Carpet	90/10 Wool/ Nylon	Broadloom, 48 oz.		Vinyl also acceptable
2105	Skirting	MDF	Stain	150mmH x 20 mm thick nominal		or floor vinyl coved skirting
3000	Wall finish	Paint	Acrylic, washable			
7001	Windows					Desirable

Fittings and Furniture (FF)

ID	Description	Category	Group	Qty	Selection / Remarks
690	Bed: domestic, single	Furniture/ Fitting	3	1	
2150	Chair: patient	Furniture/ Fitting	3	1	
2655	Chair: visitor	Furniture/ Fitting	3	2	1 for desk
4330	Cupboard: wardrobe	Furniture/ Fitting	1	1	with hanging rail & shelves
4900	Curtain track: window	Metalwork	1	1	to external window
5410	Curtain: window, drapes	Furniture/ Fitting	3	1	
5900	Desk	Furniture/ Fitting	3	1	
13700	Mirror	Metalwork	1	1	optional

Department Indian Health Facility Guidelines
Room Name ADL Bed Room

Room Tag: 1120
Room Code: ADLBR-IN

ID	Description	Category	Group	Qty	Selection / Remarks
22690	Table: bedside	Furniture/ Fitting	3	1	heavy

Services

ID	Description	Service Category	Qty	Selection / Remarks
1005	Voice / Data outlet: single	Communications	2	1 near bed; 1 near desk
5000	Airconditioning	HVAC		
6000	General fluorescent	Lighting		
6050	Special: reading	Lighting		
8005	Patient call handset	Nurse Call	1	call button & light switch on the handset
8000	Patient/ Staff call	Nurse Call	1	+ indicator button & light
8010	Staff/ Nurse assist call	Nurse Call	1	+ indicator button & light
9040	Body protected	Power		
9015	GPO: Cleaner	Power	1	
9001	GPO: Double	Power	1	near desk
9000	GPO: Single	Power	4	2 to bedhead; 2 on walls



The Indian Health Facility Guidelines recommends the use of **HFBS** “**Health Facility Briefing System**” to edit all room data sheet information for your project.

HFBS provides edit access to all HFG India standard rooms, departments, and more than 40 report templates.

HFBS Health Facility Briefing System



Briefing Module

The Health Facility Briefing System (HFBS) has numerous modules available via annual subscription. It suits healthcare Architects, Medical Planners, Equipment Planners Project Managers and Health Authorities.

Use the HFBS Briefing Module to quickly drag in health facility departments or pre-configured room templates from the HFG standard, edit the room features such as finishes, furniture, fittings, fixtures, medical equipment, engineering services. The system can print or download as PDF more than 100 custom reports including room data sheets, schedules, and more...

To learn more about the HFBS web-based Healthcare Briefing and Design Software and to obtain editable versions of the “Standard Components” including Room Data Sheets (RDS) and Room Layout Sheets (RLS) offered on the HFG website, signup for HFBS using the link below.

Get Started Now:
hfbs.healthdesign.com.au

- ✓ HFG India Room Data Sheets and Departments are instantly editable in the HFBS software available online in the HFBS India Domain.
- ✓ You can access hundreds of report templates to print your HFG India room data in HFBS.
- ✓ HFBS has a onetime free 3 day trial available to all new users – signup for the HFBS India Domain today.

Get Started Now:
hfbs.healthdesign.com.au



HFBS

Health Facility Briefing System

hfbsinfo.com | techsupport@healthdesign.com.au

Indian HFG Standard Components

Room Layout Sheet

Room Name **ADL Bathroom**

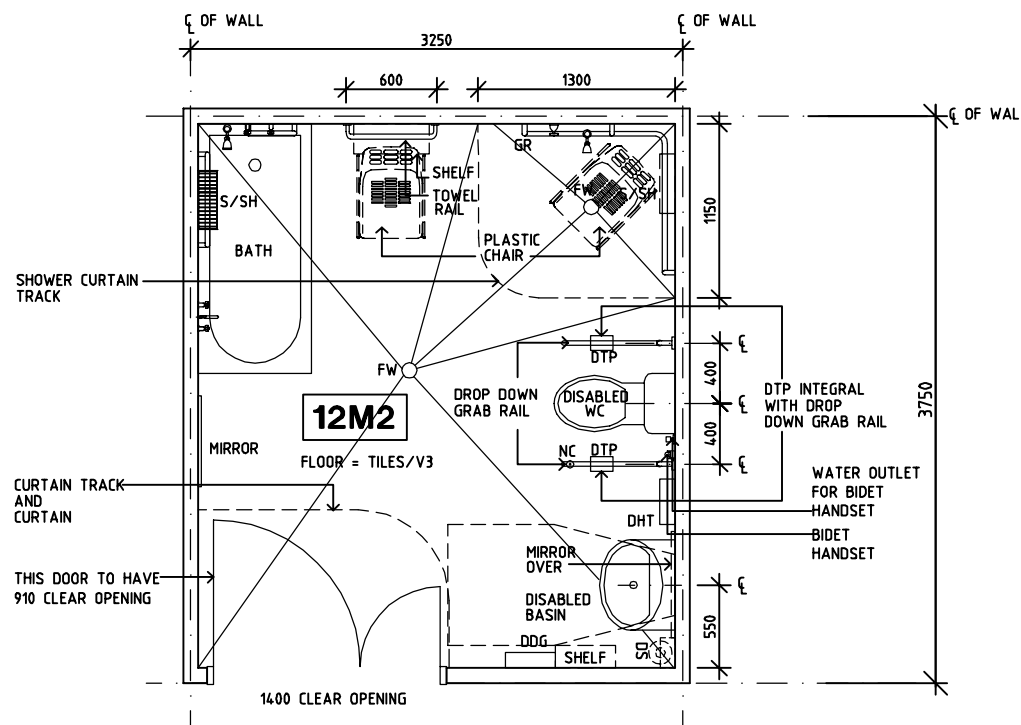
RLS Room Code

ADLB-IN

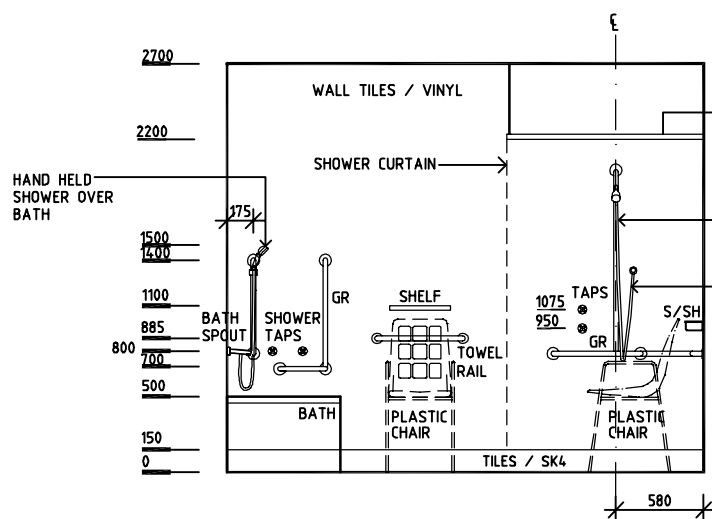
RDS Room Code

ADLB-IN

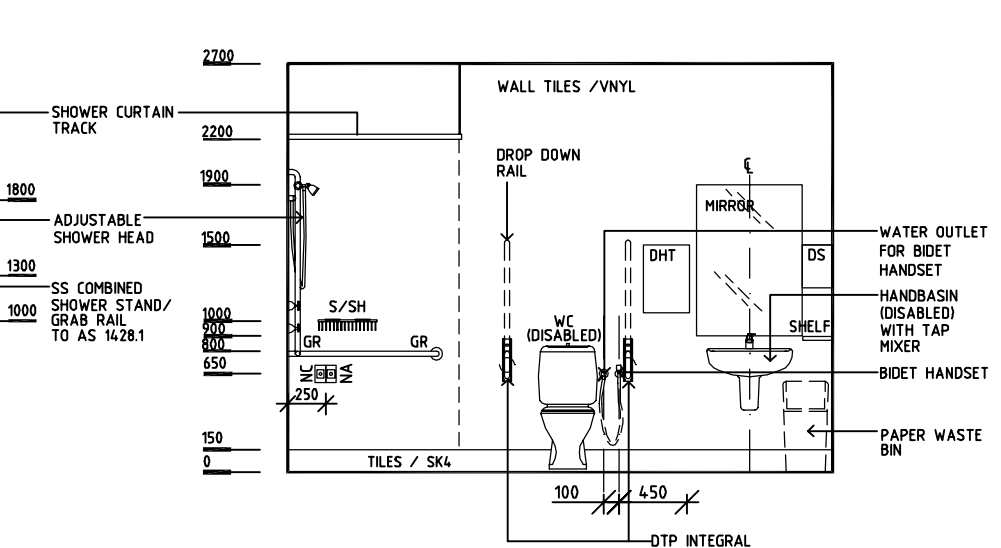
- COH COAT HOOK
- CW COLD WATER
- DDG DISPENSER-DISPOSABLE GLOVE
- DHT DISPENSER-HAND TOWEL
- DP DOOR AND FRAME PROTECTION
- DS DISPENSER-SOAP
- DTP DISPENSER-TOILET PAPER
- EC EMERGENCY CALL
- FW FLOOR WASTE
- GPO/2 GENERAL PURPOSE OUTLET-DOUBLE
- GR GRAB RAIL
- HW HOT WATER
- LS LIGHT SWITCH
- NA NURSE/STAFF ASSIST BUTTON
- NC NURSE CALL
- S/SH SOAP/SHAMPOO HOLDER
- SK4 FLOOR VINYL COVERED
- V3 FLOOR VINYL -STUDDED
- WC TOILET



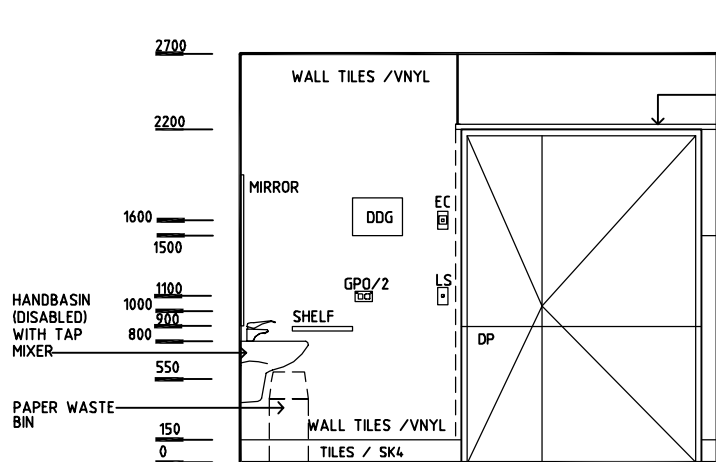
PLAN



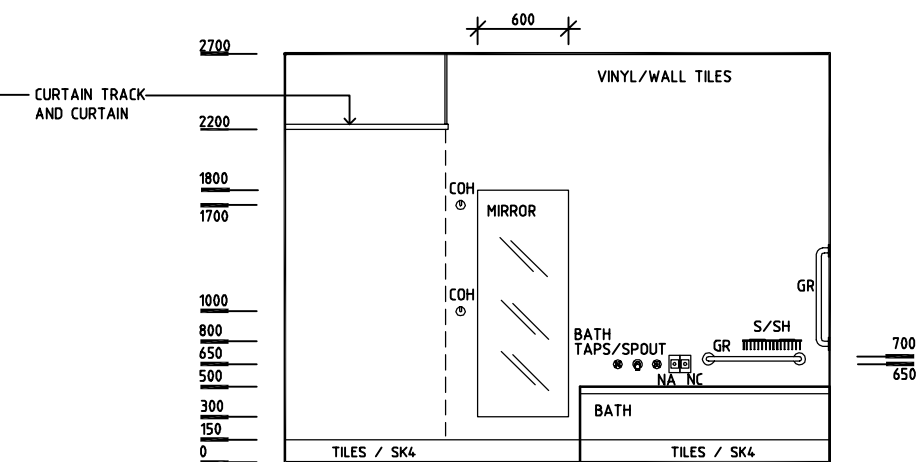
ELEVATION 1



ELEVATION 2



ELEVATION 3



ELEVATION 4

REV	DESCRIPTION	DATE	BY	REV	DESCRIPTION	DATE	BY	REV	DESCRIPTION	DATE	BY
1	FIRST ISSUE	24.02.2014	AA								

<p>Indian Health Facility Guidelines</p>	Indian Health Facility Guidelines at: www.healthdesign.com.au/ihfg Editable version of Standard Components on Health Facility Briefing System (HFBS) at: www.healthdesign.com.au Provided by TAHPI				DESIGNED	APPROVED	DATE	SCALE(S)	SHEET
	CC	DB	24.10.10	1:50 in A3	1 of 1				
	CAD FILE NAME		PAPER DRAWING ID		ISSUE				
ADLB-IN		ADLB-IN		1					

This document is for advisory purpose only

The Indian Health Facility Guidelines recommends the use of **HFBS** “**Health Facility Briefing System**” to edit all room data sheet information for your project.

HFBS provides edit access to all HFG India standard rooms, departments, and more than 40 report templates.

HFBS Health Facility Briefing System



Briefing Module

The Health Facility Briefing System (HFBS) has numerous modules available via annual subscription. It suits healthcare Architects, Medical Planners, Equipment Planners Project Managers and Health Authorities.

Use the HFBS Briefing Module to quickly drag in health facility departments or pre-configured room templates from the HFG standard, edit the room features such as finishes, furniture, fittings, fixtures, medical equipment, engineering services. The system can print or download as PDF more than 100 custom reports including room data sheets, schedules, and more...

To learn more about the HFBS web-based Healthcare Briefing and Design Software and to obtain editable versions of the “Standard Components” including Room Data Sheets (RDS) and Room Layout Sheets (RLS) offered on the HFG website, signup for HFBS using the link below.

Get Started Now:
hfbs.healthdesign.com.au

- ✓ HFG India Room Data Sheets and Departments are instantly editable in the HFBS software available online in the HFBS India Domain.
- ✓ You can access hundreds of report templates to print your HFG India room data in HFBS.
- ✓ HFBS has a onetime free 3 day trial available to all new users – signup for the HFBS India Domain today.

Get Started Now:
hfbs.healthdesign.com.au



HFBS

Health Facility Briefing System

hfbsinfo.com | techsupport@healthdesign.com.au

Department	Indian Health Facility Guidelines	Room Tag:	1110
Room Name	ADL Bathroom	Room Code:	ADLB-IN
Net Room Area Briefed	12.0 M2		
No of Rooms	1		
Subtotal of Briefed Area	12.00 M2		
Hours of Operation	24 Hours		
Occupancy	1 patient; 1 - 2 staff		
Also covers these Rooms			
Description/ Special Requirements	<p>A bathroom for patient 'Activities of Daily Living' assessment and training. The ADL Bathroom provides for training of patients to use a domestic bath, patient dressing, undressing, grooming and handwashing. Facilities include a domestic bath installed in a corner of the room, accessible toilet and handbasin and a separate shower within the room. A low height adjustable shower is required over the bath.</p> <p>Additional Design Requirements:</p> <ul style="list-style-type: none"> - The shower area must not have a raised hob. - The entrance to the bathroom is to be flush with the adjoining corridor. <p>Acoustics: Sound attenuation level - Medium. Acoustic privacy required.</p> <p>Body Protected electrical area</p>		
Amendment	05.03.2014 First Issue		

Room Fabric and outline specifications

ID	Fabric	Material	Finish	Specification	Selection	Remarks
5023	Ceiling	Plasterboard	Prefinished	Water resistant, drop in tiles, 600x1200		
6025	Cornice	Aluminium	Powdercoat	shadow line		
8010	Door protection	Composite	Prefinished PVC	Protection plate to 900 AFFL		
8040	Door protection	Composite	Prefinished PVC	To door frame		
9110	Doors	Solid Core	Paint	1 1/2 leaf		1400mm clear opening, privacy latch
1175	Floor finish	Tiles	Non-slip	Ceramic		non-slip vinyl also acceptable
2145	Skirting	Tiles	To match floor	Coved		or coved vinyl skirting for vinyl floor
3080	Wall finish	Tiles	Glazed	Full height		wall vinyl also acceptable

Fittings and Furniture (FF)

ID	Description	Category	Group	Qty	Selection / Remarks
1002	Bench seat: fold up/down	Furniture/ Fitting	1	1	in shower area; shower chair also acceptable
2300	Chair: shower	Furniture/ Fitting	3	1	
3400	Coathook	Metalwork	1	2	1 at 1000H

Department Indian Health Facility Guidelines
Room Name ADL Bathroom

Room Tag: 1110
Room Code: ADLB-IN

ID	Description	Category	Group	Qty	Selection / Remarks
4700	Curtain track: privacy screen	Metalwork	1	1	to entry door
4800	Curtain track: shower	Metalwork	1	1	
5250	Curtain: privacy screen	Furniture/ Fitting	3	1	to entry door
5300	Curtain: shower	Furniture/ Fitting	3	1	
6152	Dispenser: disposable glove	Furniture/ Fitting	2	1	near entry
6154	Dispenser: paper/ hand towel	Furniture/ Fitting	2	1	to basin
6156	Dispenser: soap	Furniture/ Fitting	2	1	to basin
6160	Dispenser: toilet paper	Furniture/ Fitting	2	2	to toilet grab rails
8430	Grab rail: Bath	Metalwork	1	2	
8450	Grab rail: Shower	Metalwork	1	1	
8420	Grab rail: WC, disabled use	Metalwork	1	1	
13700	Mirror	Metalwork	1	1	above basin
13800	Mirror: full length	Metalwork	1	1	dressing
19800	Shelf: laminate	Furniture/ Fitting	1	2	150mmW x 400mmL; vanity; 1 near bath, 1 near basin
20650	Soap/ shampoo holder	Furniture/ Fitting	1	2	
23700	Towel rail	Metalwork	1	1	
23865	Transfer bench	Furniture/ Fitting	3	1	portable - not fixed, near bath

Fixtures, Equipment and associated Services (FE)

ID	Description	Group	Qty	Ele	Data	CdW	HtW	WmW	Tap	Dns	Gas	Selection / Remarks
3050	Basin: handwash, disabled	1	1	___	___	yes	___	yes	yes	yes	___	lever taps
3201	Bath: domestic	1	1	___	___	yes	___	yes	yes	yes	___	
3003	Bidet handset	1	1	___	___	___	___	yes	yes	___	___	near toilet
47400	Shower: hand-held	1	1	___	___	yes	___	yes	yes	yes	___	low level over bath
47400	Shower: hand-held	1	1	___	___	yes	___	yes	yes	yes	___	
55650	Toilet suite: disabled use	1	1	___	___	yes	___	___	yes	yes	___	with backrest

Services

ID	Description	Service Category	Qty	Selection / Remarks
5000	Airconditioning	HVAC		
5019	Exhaust	HVAC		
4033	Floor waste	Hydraulics	2	
6000	General fluorescent	Lighting		
8080	Emergency call	Nurse Call	1	+ indicator button & light
8000	Patient/ Staff call	Nurse Call	3	+ indicator button & light
8010	Staff/ Nurse assist call	Nurse Call	2	+ indicator button & light
9040	Body protected	Power		
9001	GPO: Double	Power	1	locate near door outside room
9060	GPO: Special: for equipment	Power	1	for hair dryer & shaver use only; to comply with relevant electric safety guidelines

The Indian Health Facility Guidelines recommends the use of **HFBS** “**Health Facility Briefing System**” to edit all room data sheet information for your project.

HFBS provides edit access to all HFG India standard rooms, departments, and more than 40 report templates.

HFBS Health Facility Briefing System



Briefing Module

The Health Facility Briefing System (HFBS) has numerous modules available via annual subscription. It suits healthcare Architects, Medical Planners, Equipment Planners Project Managers and Health Authorities.

Use the HFBS Briefing Module to quickly drag in health facility departments or pre-configured room templates from the HFG standard, edit the room features such as finishes, furniture, fittings, fixtures, medical equipment, engineering services. The system can print or download as PDF more than 100 custom reports including room data sheets, schedules, and more...

To learn more about the HFBS web-based Healthcare Briefing and Design Software and to obtain editable versions of the “Standard Components” including Room Data Sheets (RDS) and Room Layout Sheets (RLS) offered on the HFG website, signup for HFBS using the link below.

Get Started Now:
hfbs.healthdesign.com.au

- ✓ HFG India Room Data Sheets and Departments are instantly editable in the HFBS software available online in the HFBS India Domain.
- ✓ You can access hundreds of report templates to print your HFG India room data in HFBS.
- ✓ HFBS has a onetime free 3 day trial available to all new users – signup for the HFBS India Domain today.

Get Started Now:
hfbs.healthdesign.com.au



HFBS

Health Facility Briefing System

hfbsinfo.com | techsupport@healthdesign.com.au