

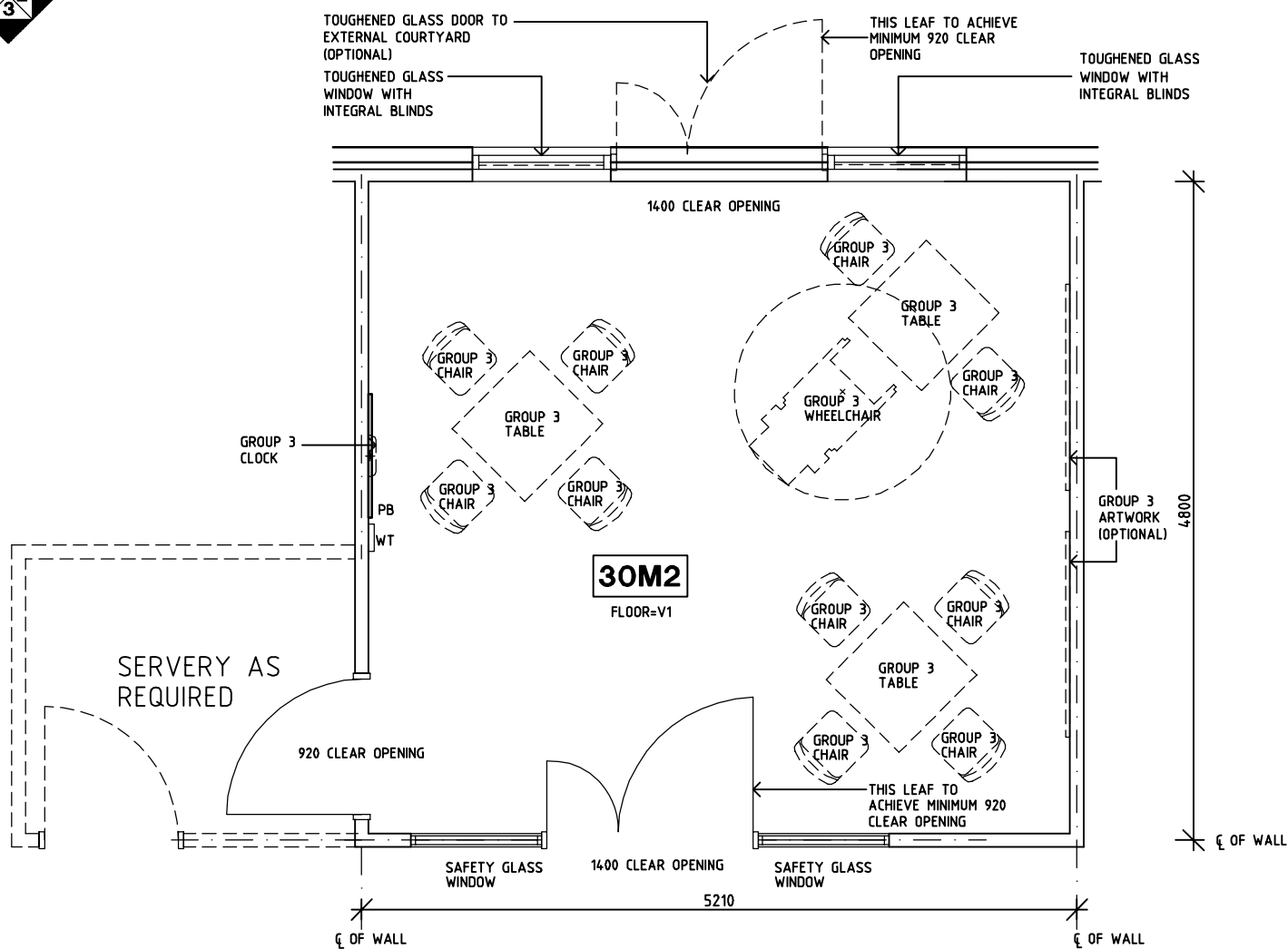
Indian HFG Standard Components

Room Layout Sheet

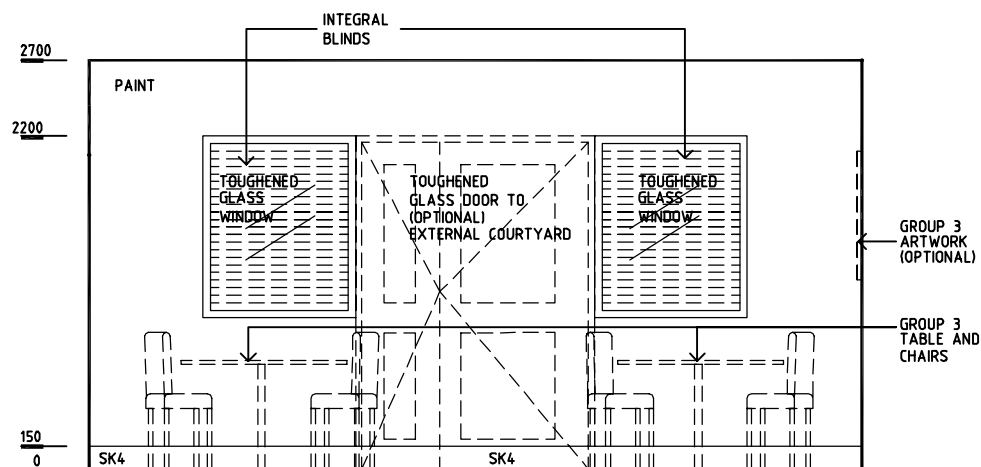
Room Name **Dining Room (Mental Health), 30m2**

RLS Room Code **DINMH-30-IN**
RDS Room Code **DINMH-30-IN**

AS	ADJUSTABLE SHELF
COM/1	COMMUNICATION/DATA OUTLET - SINGLE
EC	EMERGENCY CALL
GPO/2	GENERAL POWER OUTLET - DOUBLE
GPO/C	GENERAL PURPOSE OUTLET - CLEANER'S
LS/R	LIGHT SWITCH - ROOM
LS/DD	LIGHT SWITCH - DIMMER, DOWNLIGHTS
OP	OBSERVATION PANEL
PB	PINBOARD
SK4	FLOOR VINYL COVERED SKIRTING
V1	FLOOR VINYL - STANDARD
WT	WALL TELEPHONE



PLAN



ELEVATION 1

REV	DESCRIPTION	DATE	BY	REV	DESCRIPTION	DATE	BY	REV	DESCRIPTION	DATE	BY
1	FIRST ISSUE	24.02.2014	AA								

	Indian Health Facility Guidelines <small>Indian Health Facility Guidelines at: www.healthdesign.com.au/ihfg Editable version of Standard Components on Health Facility Briefing System (HFBS) at: www.healthdesign.com.au Provided by TAHPI</small>	DESIGNED	APPROVED	DATE	SCALE(S)	SHEET
		CC	DB	24.10.2010	1:50 in A3	1 of 2
	CAD FILE NAME	PAPER DRAWING ID		ISSUE		
DINMH-30-IN	DINMH-30-INa		1			

This document is for advisory purpose only

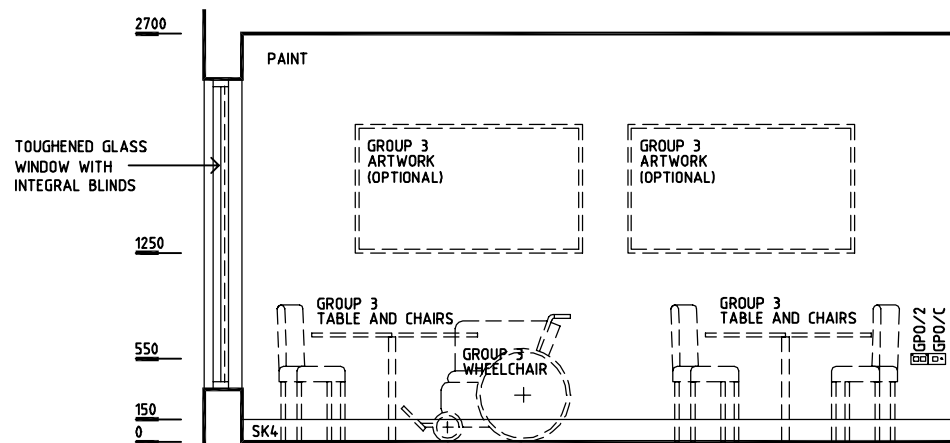
Indian HFG Standard Components

Room Layout Sheet

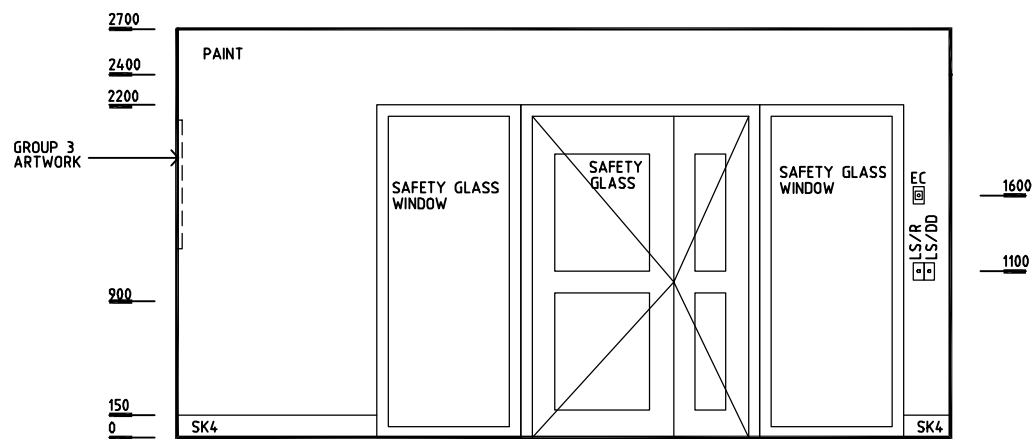
Room Name **Dining Room (Mental Health), 30m2**

RLS Room Code **DINMH-30-IN**
RDS Room Code **DINMH-30-IN**

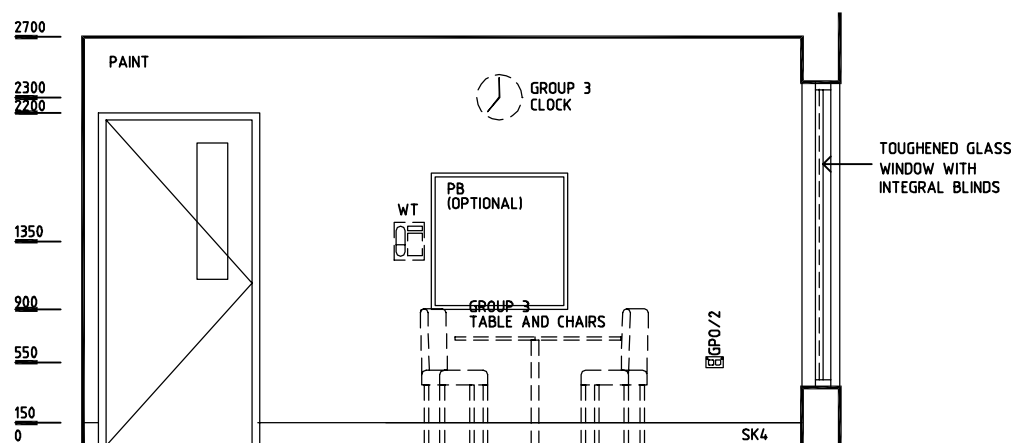
AS	ADJUSTABLE SHELF
COM/1	COMMUNICATION/DATA OUTLET - SINGLE
EC	EMERGENCY CALL
GPO/2	GENERAL POWER OUTLET - DOUBLE
GPO/C	GENERAL PURPOSE OUTLET - CLEANER'S
LS/R	LIGHT SWITCH - ROOM
LS/DD	LIGHT SWITCH - DIMMER, DOWNLIGHTS
OP	OBSERVATION PANEL
PB	PINBOARD
SK4	FLOOR VINYL COVERED SKIRTING
V1	FLOOR VINYL - STANDARD
WT	WALL TELEPHONE



ELEVATION 2




ELEVATION 3



ELEVATION 4

REV	DESCRIPTION	DATE	BY	REV	DESCRIPTION	DATE	BY	REV	DESCRIPTION	DATE	BY
1	FIRST ISSUE	24.02.2014	AA								

 Indian Health Facility Guidelines	Indian Health Facility Guidelines at: www.healthdesign.com.au/ihfg Editable version of Standard Components on Health Facility Briefing System (HFBS) at: www.healthdesign.com.au Provided by TAHPI		DESIGNED	APPROVED	DATE	SCALE(S)	SHEET
	CC	DB	24.10.2010	1:50 in A3	2 of 2		
	CAD FILE NAME		PAPER DRAWING ID		ISSUE		
DINMH-30-IN		DINMH-30-INb		1			

This document is for advisory purpose only

Department	Indian Health Facility Guidelines	Room Tag:	2190
Room Name	Dining Room (Mental Health), 30m2	Room Code:	DINMH-30-IN
Net Room Area Briefed	30.0 M2		
No of Rooms	1		
Subtotal of Briefed Area	30.00 M2		
Hours of Operation	24 Hours		
Occupancy	Up to 10 patients with additional visitors; 1-2 staff		
Also covers these Rooms			
Description/ Special Requirements	<p>The Dining Room is an area provided for patients within the Mental Health Unit to eat their meals, away from the bedroom environment. The Dining Room may be combined with the Lounge/ Activities area and used for other patient activities when not in use for meals. Access and dining space should be provided for disabled patients. The Servery will be located adjacent and will require restricted access. Access to an external courtyard area is desirable. Finishes, fittings & fixtures and furniture should be suitable for mental health patients. All glazing (including external windows) is to comply with Mental Health Guidelines.</p> <p>Acoustics: sound attenuation medium, acoustic privacy required</p> <p>Body Protected electrical area</p>		
Amendment	05.03.2014 - Issue 1		

Room Fabric and outline specifications

ID	Fabric	Material	Finish	Specification	Selection	Remarks
5010	Ceiling	Plasterboard	Paint, washable	Flush set, suspended		
6025	Cornice	Aluminium	Powdercoat	shadow line		
9120	Doors	Alum/ Safety glass	Powdercoat/ paint	1 1/2 leaf, fully glazed		1400mm clear opening; lockable
9006	Doors	Solid Core/ Safety glass	Paint	Single leaf, observation panel		to Servery; 920mm clear opening; lockable
1000	Floor finish	Vinyl	Standard slip resistant	Seamless, coved		
7055	Observation	Alum/ Glass	Powdercoat	Internal window, double glazed		safety glass with integral venetians
2000	Skirting	Vinyl	Prefinished	Floor vinyl coved, 150 mmH		
3000	Wall finish	Paint	Acrylic, washable			
7001	Windows					safety glass, desirable

Fittings and Furniture (FF)

ID	Description	Category	Group	Qty	Selection / Remarks
350	Artwork	Furniture/ Fitting	3	2	optional, secure fixings
1252	Blind: Venetian integral	Furniture/ Fitting	1	2	to windows as required
1700	Chair: dining	Furniture/ Fitting	3	10	with space for wheelchair/s
3350	Clock: battery operated	Furniture/ Fitting	3	1	

Department Indian Health Facility Guidelines
Room Name Dining Room (Mental Health), 30m2

Room Tag: 2190
Room Code: DINMH-30-IN

ID	Description	Category	Group	Qty	Selection / Remarks
17360	Pinboard: fabric covered	Furniture/ Fitting	2	1	900x900, optional, secure fixings
23000	Table: dining	Furniture/ Fitting	3	3	

Fixtures, Equipment and associated Services (FE)

ID	Description	Group	Qty	Ele	Data	CdW	HtW	WmW	Tap	Dns	Gas	Selection / Remarks
54510	Telephone: handset, standard	3	1	___	yes	___	___	___	___	___	___	wall telephone, optional

Services

ID	Description	Service Category	Qty	Selection / Remarks
1000	Telephone: PABX	Communications	1	wall telephone, optional
5000	Airconditioning	HVAC		
6110	Downlights: dimmable	Lighting		optional
6000	General fluorescent	Lighting		
8080	Emergency call	Nurse Call	1	or Duress call
9040	Body protected	Power		
9015	GPO: Cleaner	Power	1	
9001	GPO: Double	Power	2	



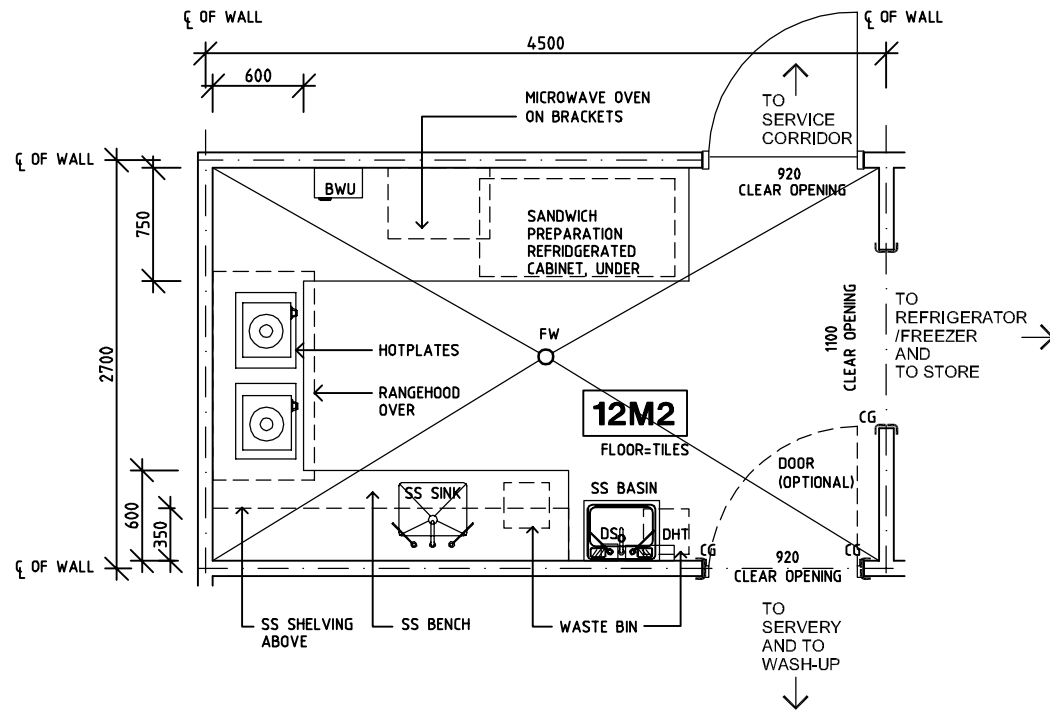
Indian HFG Standard Components

Room Layout Sheet

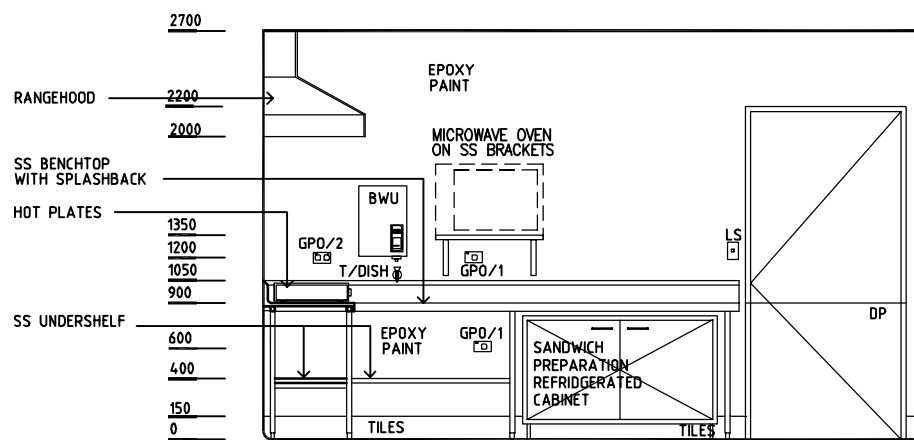
Room Name **Coffee Shop - Preparation**

RLS Room Code **COFS-P-IN**
RDS Room Code **COFS-P-IN**

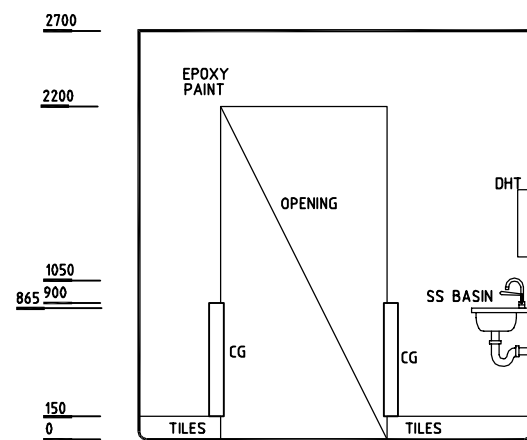
- BWU BOILING WATER UNIT
- CG CORNER PROTECTION
- DHT DISPENSER - HAND TOWEL
- DP DOOR AND DOOR FRAME PROTECTION
- DS DISPENSER - SOAP
- FW FLOOR WASTE
- GPO/1 GENERAL PURPOSE OUTLET - SINGLE
- GPO/2 GENERAL PURPOSE OUTLET - DOUBLE
- LS LIGHT SWITCH
- OP OBSERVATION PANEL
- TILES FLOOR VINYL COVED SKIRTING
- SS STAINLESS STEEL
- V4 VINYL FLOORING, SAFETY



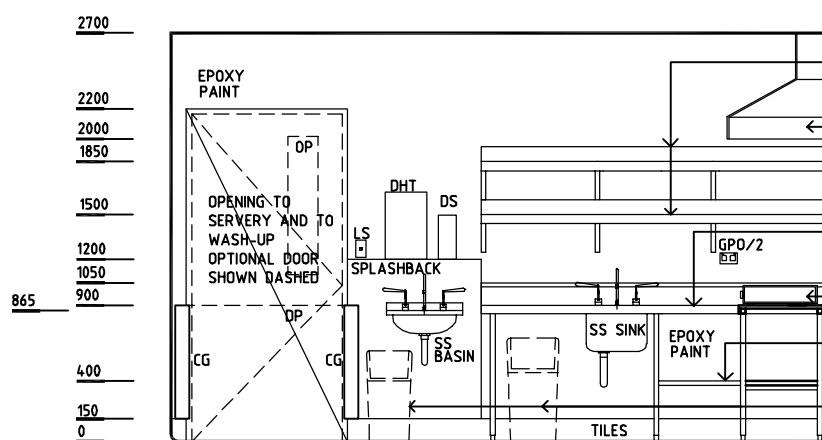
PLAN



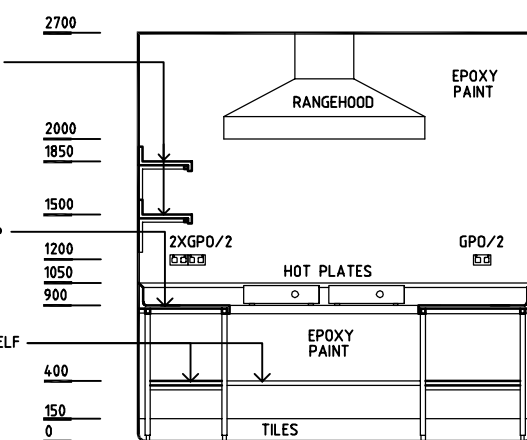
ELEVATION 1



ELEVATION 2



ELEVATION 3



ELEVATION 4

REV	DESCRIPTION	DATE	BY	REV	DESCRIPTION	DATE	BY	REV	DESCRIPTION	DATE	BY
1	FIRST ISSUE	24.02.2014	AA								

	Indian Health Facility Guidelines <small>Indian Health Facility Guidelines at: www.healthdesign.com.au/ihfg Editable version of Standard Components on Health Facility Briefing System (HFBS) at: www.healthdesign.com.au Provided by TAHPI</small>	DESIGNED	APPROVED	DATE	SCALE(S)	SHEET
		CC	DB	24.10.10	1:50 in A3	1 of 1
		CAD FILE NAME		PAPER DRAWING ID		ISSUE
COFS-P-IN		COFS-P-IN		1		

This document is for advisory purpose only

Department	Indian Health Facility Guidelines	Room Tag:	1960
Room Name	Coffee Shop - Preparation	Room Code:	COFS-P-IN
Net Room Area Briefed	12.0 M2		
No of Rooms	1		
Subtotal of Briefed Area	12.00 M2		
Hours of Operation	8am to 8pm, daily		
Occupancy	Up to 3		
Also covers these Rooms			
Description/ Special Requirements	The Coffee Shop Preparation provides an area for food preparation which may include sandwich making, reheating, some cooking and preparation of hot drinks. The extent of food preparation and cooking will be determined by the Operational Policy. The Preparation area will be located with close access to a Wash-up area and the Servery counter.		
Amendment	05.03.2014 - Issue 1		

Room Fabric and outline specifications

ID	Fabric	Material	Finish	Specification	Selection	Remarks
5010	Ceiling	Plasterboard	Paint, washable	Flush set, suspended		
6025	Cornice	Aluminium	Powdercoat	shadow line		
9004	Doors	Solid Core/ Glass	Paint	Single leaf, observation panel		920mm clear opening, door to Servery area optional
1175	Floor finish	Tiles	Non-slip	Ceramic		slip resistance rating of R10 (min); vinyl also acceptable
2142	Skirting	Tiles	Glazed	One course high		or floor vinyl covered skirting
3015	Wall finish	Paint	Epoxy			
3022	Wall finish	Resinate, 6mm	Prefinished	Splashback		to basin; tiles/ vinyl also acceptable
4030	Wall protection	Composite	Prefinished PVC	Corner guards to 900 AFFL		if door not required

Fittings and Furniture (FF)

ID	Description	Category	Group	Qty	Selection / Remarks
1010	Bench: stainless steel	Metalwork	1	1	
1460	Bracket: wall	Metalwork	1	1	for microwave
6154	Dispenser: paper/ hand towel	Furniture/ Fitting	2	1	to basin
6156	Dispenser: soap	Furniture/ Fitting	2	1	to basin
19810	Shelf: SS, over	Metalwork	1	2	over sink area
19820	Shelf: SS, under	Metalwork	1	1	
24102	Waste bin: general	Furniture/ Fitting	3	1	under bench
24100	Waste bin: paper, 20 Litre	Furniture/ Fitting	3	1	for basin

Fixtures, Equipment and associated Services (FE)

ID	Description	Group	Qty	Ele	Data	CdW	HtW	WmW	Tap	Dns	Gas	Selection / Remarks
2870	Basin: handwash, stainless steel	1	1	___	___	yes	___	yes	yes	yes	___	
5030	Boiling water unit: 15 Litre	1	1	yes	___	yes	___	___	yes	yes	___	



Department Indian Health Facility Guidelines
Room Name Coffee Shop - Preparation

Room Tag: 1960
Room Code: COFS-P-IN

ID	Description	Group	Qty	Ele	Data	CdW	HtW	WmW	Tap	Dns	Gas	Selection / Remarks
6215	Cabinet: refrigerated	1	1	yes	___	___	___	___	___	___	___	under bench
25850	Hotplate: single element	1	2	yes	___	___	___	___	___	___	___	
35400	Oven: microwave, domestic	3	1	yes	___	___	___	___	___	___	___	over bench
42950	Rangehood	1	1	yes	___	___	___	___	___	___	___	over hotplates
49110	Sink: 450x350x300D	1		___	___	yes	opt	opt	yes	yes	___	hot water

Services

ID	Description	Service Category	Qty	Selection / Remarks
5000	Airconditioning	HVAC		
5019	Exhaust	HVAC		to rangehood
4033	Floor waste	Hydraulics		
6000	General fluorescent	Lighting		
9001	GPO: Double	Power	5	
9000	GPO: Single	Power	1	for microwave
9060	GPO: Special: for equipment	Power	2	refrigerated cabinet, rangehood

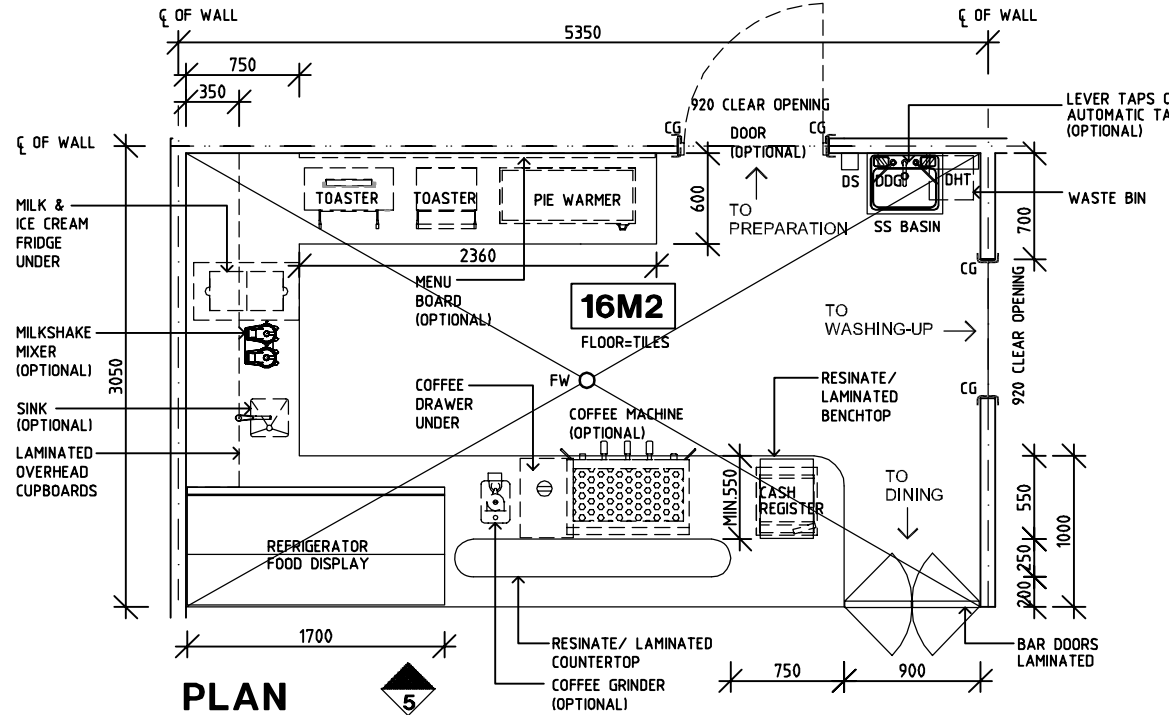
Indian HFG Standard Components

Room Layout Sheet

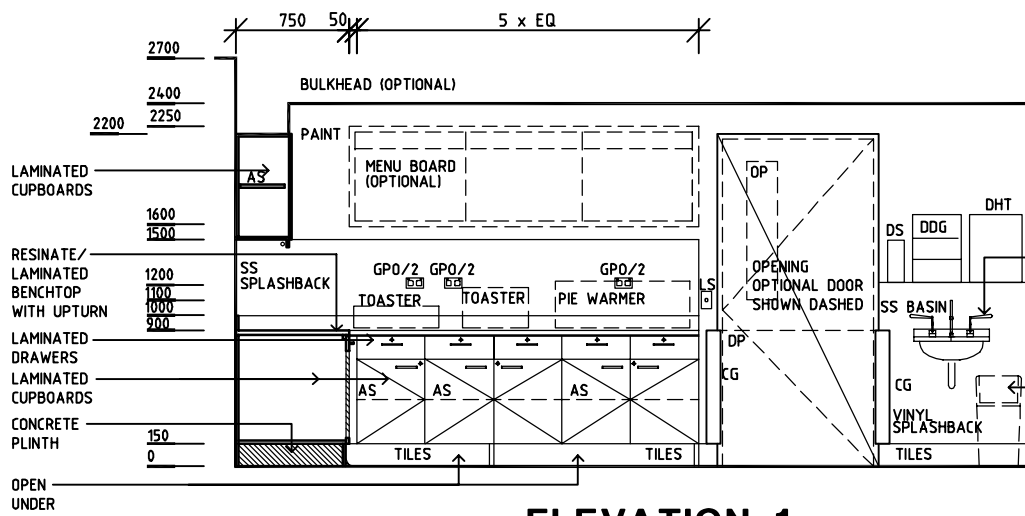
Room Name **Coffee Shop - Servery**

RLS Room Code **COFS-SERV-IN**
RDS Room Code **COFS-SERV-IN**

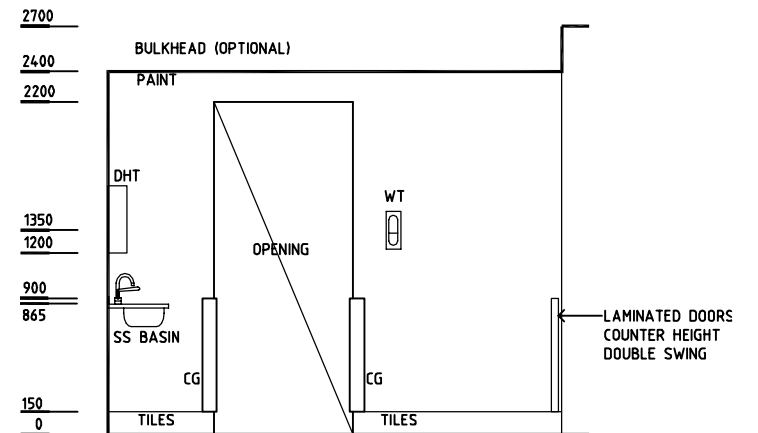
- AS ADJUSTABLE SHELF
- CG CORNER PROTECTION
- DDG DISPENSER - DISPOSABLE GLOVES
- DHT DISPENSER - HAND TOWEL
- DP DOOR AND DOOR FRAME PROTECTION
- DS DISPENSER - SOAP
- FW FLOOR WASTE
- GPO/2 GENERAL PURPOSE OUTLET - DOUBLE
- GPO/S SPECIAL PURPOSE OUTLET
- LS LIGHT SWITCH
- OP OBSERVATION PANEL
- TILES FLOOR VINYL COVERED SKIRTING
- SS STAINLESS STEEL
- TILES VINYL FLOORING, SAFETY
- WT WALL TELEPHONE



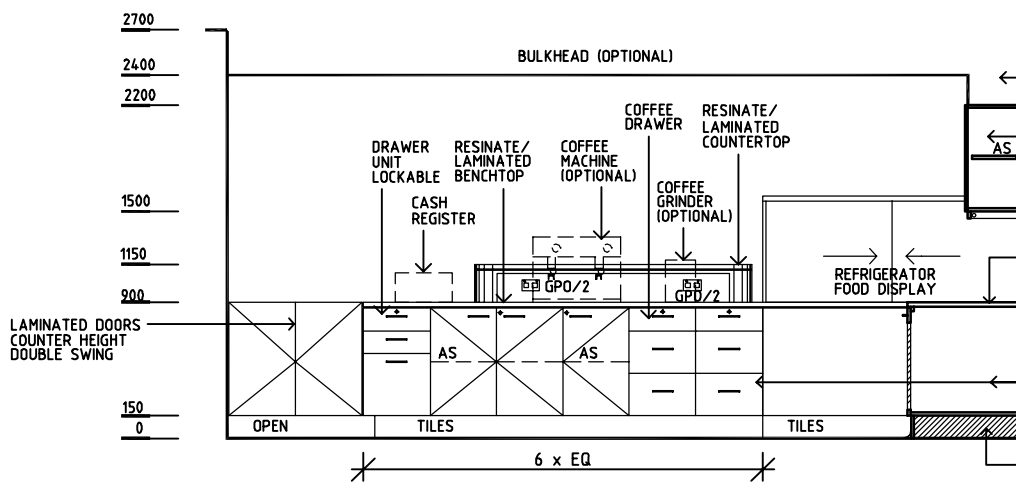
PLAN



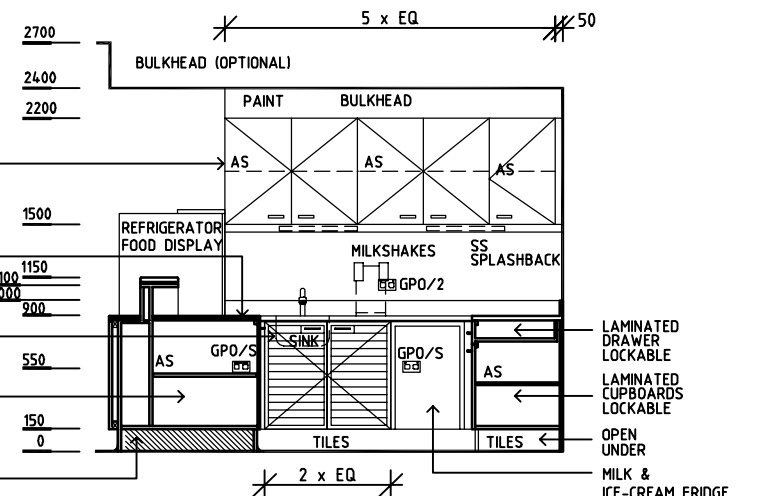
ELEVATION 1



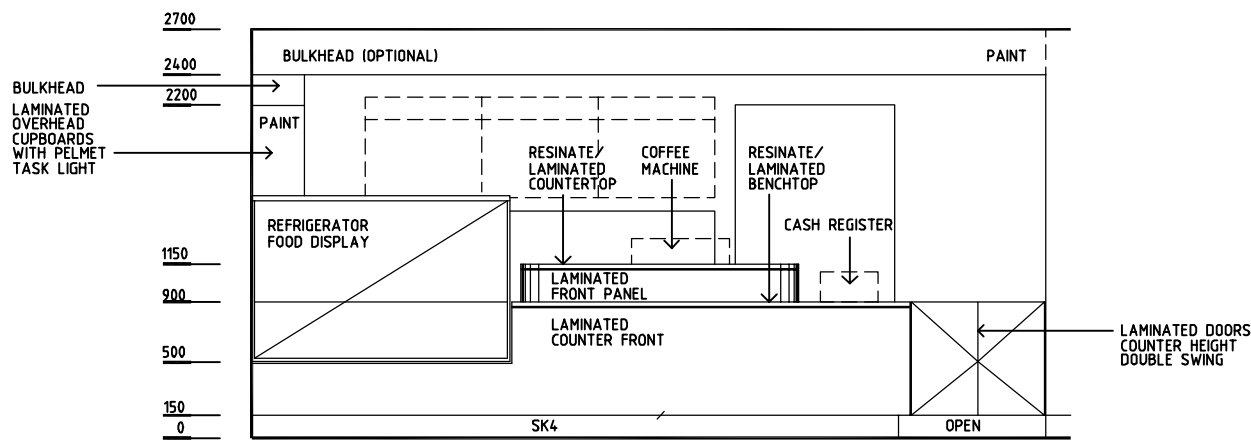
ELEVATION 2



ELEVATION 3



ELEVATION 4



ELEVATION 5

REV	DESCRIPTION	DATE	BY	REV	DESCRIPTION	DATE	BY	REV	DESCRIPTION	DATE	BY
1	FIRST ISSUE	24.02.2014	AA								

Department	Indian Health Facility Guidelines	Room Tag:	1965
Room Name	Coffee Shop - Servery	Room Code:	COFS-SERV-IN
Net Room Area Briefed	16.0 M2		
No of Rooms	1		
Subtotal of Briefed Area	16.00 M2		
Hours of Operation	8am to 8pm, daily		
Occupancy	Up to 3		
Also covers these Rooms			
Description/ Special Requirements	The Coffee Shop Servery provides an area for food display, preparation of hot and cold drinks, ready made hot food, a serving counter and cash register. The Servery will be located with direct access from a circulation corridor and adjacent to the Dining Area, Preparation and Wash-up areas.		
Amendment	05.03.2014 - Issue 1		

Room Fabric and outline specifications

ID	Fabric	Material	Finish	Specification	Selection	Remarks
5010	Ceiling	Plasterboard	Paint, washable	Flush set, suspended		
6025	Cornice	Aluminium	Powdercoat	shadow line		
8010	Door protection	Composite	Prefinished PVC	Protection plate to 900 AFFL		if door provided
8040	Door protection	Composite	Prefinished PVC	To door frame		if door provided
9250	Doors	Laminate	Prefinished	Double leaf, counter height		to Dining area
9004	Doors	Solid Core/ Glass	Paint	Single leaf, observation panel		920mm clear opening, door to Preparation optional
1175	Floor finish	Tiles	Non-slip	Ceramic		slip resistance rating of R10 (min); vinyl also acceptable
2142	Skirting	Tiles	Glazed	One course high		or floor vinyl coved skirting
3000	Wall finish	Paint	Acrylic, washable			
3022	Wall finish	Resinate, 6mm	Prefinished	Splashback		to basin; tiles/ vinyl also acceptable
3110	Wall finish	Stainless steel	Linished	Splashback		above bench
4030	Wall protection	Composite	Prefinished PVC	Corner guards to 900 AFFL		as required

Fittings and Furniture (FF)

ID	Description	Category	Group	Qty	Selection / Remarks
1030	Bench: resinate	Furniture/ Fitting	1	1	or laminate
4232	Counter front	Furniture/ Fitting	1	1	laminate
4230	Counter top	Furniture/ Fitting	1	1	resinate/ laminate
4440	Cupboard: drawer unit, lockable	Furniture/ Fitting	1	3	under bench
4420	Cupboard: under bench, lockable	Furniture/ Fitting	1	3	1 with SS louvre doors
4470	Cupboard: wall mounted, lockable	Furniture/ Fitting	1	1	over bench

Department Indian Health Facility Guidelines
 Room Name Coffee Shop - Servery

Room Tag: 1965
 Room Code: COFS-SERV-IN

ID	Description	Category	Group	Qty	Selection / Remarks
6152	Dispenser: disposable glove	Furniture/ Fitting	2	1	near basin
6154	Dispenser: paper/ hand towel	Furniture/ Fitting	2	1	to basin
6156	Dispenser: soap	Furniture/ Fitting	2	1	to basin
13620	Menu board	Furniture/ Fitting	3	1	optional
24102	Waste bin: general	Furniture/ Fitting	3	1	under bench
24100	Waste bin: paper, 20 Litre	Furniture/ Fitting	3	1	for basin

Fixtures, Equipment and associated Services (FE)

ID	Description	Group	Qty	Ele	Data	CdW	HtW	WmW	Tap	Dns	Gas	Selection / Remarks
2870	Basin: handwash, stainless steel	1	1	___	___	yes	___	yes	yes	yes	___	
6215	Cabinet: refrigerated	1	1	yes	___	___	___	___	___	___	___	under bench, milk & icecream
8250	Cash register	3	1	yes	opt	___	___	___	___	___	___	
10270	Coffee machine, espresso	3	1	yes	___	yes	___	___	___	yes	___	optional
21550	Display: food, refrigerated	1	1	yes	___	___	___	___	___	___	___	
23400	Grinder	3	1	yes	___	___	___	___	___	___	___	coffee, optional
35430	Mixer: milkshake	3	1	yes	___	___	___	___	___	___	___	optional
47800	Sink, SS: single in bench	1	1	___	___	yes	opt	opt	yes	yes	___	hot water, mixer tap
54510	Telephone: handset, standard	3	1	___	yes	___	___	___	___	___	___	wall telephone
55100	Toaster: electric	3	2	yes	___	___	___	___	___	___	___	optional
40250	Warmer: pie	3	1	yes	___	___	___	___	___	___	___	optional

Services

ID	Description	Service Category	Qty	Selection / Remarks
1005	Voice / Data outlet: single	Communications	1	wall telephone
5000	Airconditioning	HVAC		
4033	Floor waste	Hydraulics		
6000	General fluorescent	Lighting		
6030	Special: downlights	Lighting		optional
6055	Special: task light, built in	Lighting		under O/H cupboards
9001	GPO: Double	Power	6	
9060	GPO: Special: for equipment	Power	2	refrigerated cabinet, food display

Indian HFG Standard Components

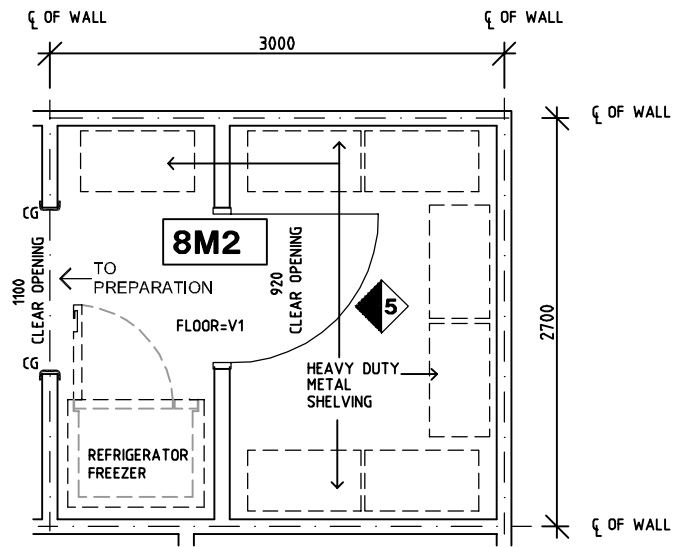
Room Layout Sheet

Room Name **Coffee Shop - Store, 8m2**

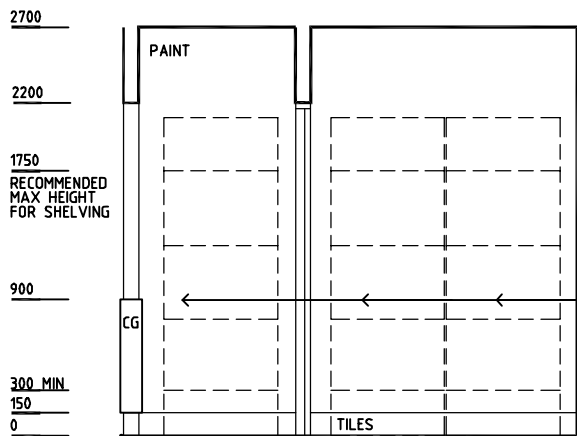
RLS Room Code **COFS-S-8-IN**

RDS Room Code **COFS-S-8-IN**

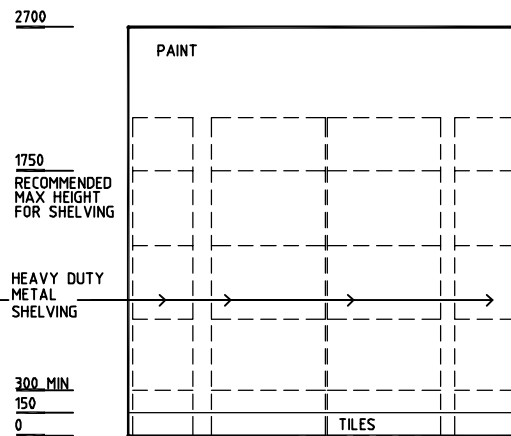
- CG CORNER GUARD
- DP DOOR AND DOOR FRAME PROTECTION
- GPO/2 GENERAL PURPOSE OUTLET - DOUBLE
- LS LIGHT SWITCH
- TILES FLOOR VINYL COVERED SKIRTING



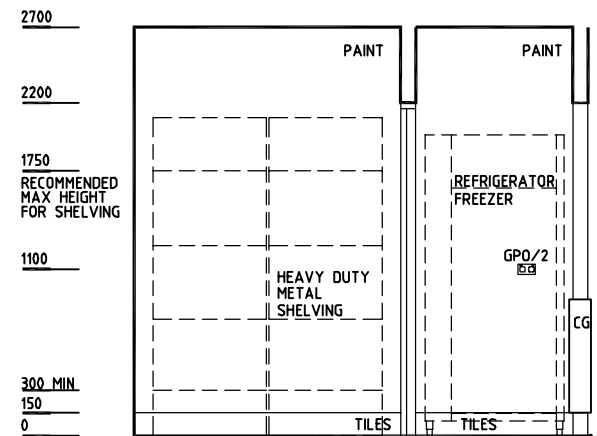
PLAN



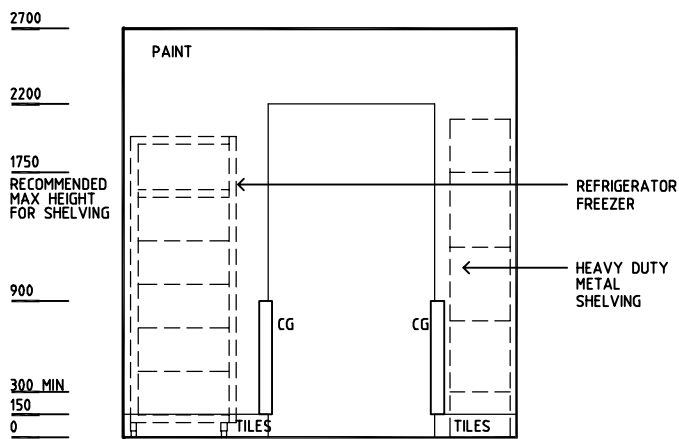
ELEVATION 1



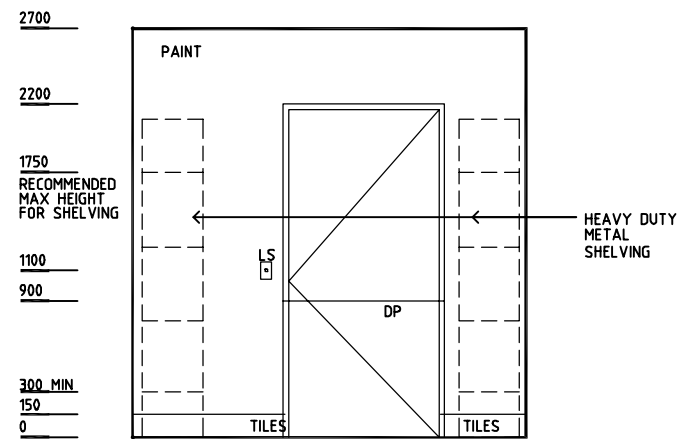
ELEVATION 2



ELEVATION 3



ELEVATION 4



ELEVATION 5

REV	DESCRIPTION	DATE	BY	REV	DESCRIPTION	DATE	BY	REV	DESCRIPTION	DATE	BY
1	FIRST ISSUE	24.02.2014	AA								



Indian Health Facility Guidelines

Indian Health Facility Guidelines at:
www.healthdesign.com.au/ihfg
 Editable version of Standard Components on
 Health Facility Briefing System (HFBS) at:
www.healthdesign.com.au
 Provided by TAHPI

DESIGNED	APPROVED	DATE	SCALE(S)	SHEET
CC	DB	24.8.2010	1:50 in A3	1 of 1
CAD FILE NAME		PAPER DRAWING ID		ISSUE
COFS-S-8-IN		COFS-S-8-IN		1

Department	Indian Health Facility Guidelines	Room Tag:	1970
Room Name	Coffee Shop - Store, 8m2	Room Code:	COFS-S-8-IN
Net Room Area Briefed	8.0 M2		
No of Rooms	1		
Subtotal of Briefed Area	8.00 M2		
Hours of Operation	24 Hours		
Occupancy	1 - 2 intermittently		
Also covers these Rooms			
Description/ Special Requirements	The Store provides a secure area for the storage of general and dry goods used within the Coffee Shop. Refrigerated storage may also be required.		
Amendment	05.03.2014 - Issue 1		

Room Fabric and outline specifications

ID	Fabric	Material	Finish	Specification	Selection	Remarks
5030	Ceiling	Plasterboard	Prefinished	Drop-in tiles, 600x1200		
6025	Cornice	Aluminium	Powdercoat	shadow line		
8010	Door protection	Composite	Prefinished PVC	Protection plate to 900 AFFL		
8040	Door protection	Composite	Prefinished PVC	To door frame		
9001	Doors	Solid Core	Paint	Single leaf		920mm clear opening, lockable
1175	Floor finish	Tiles	Non-slip	Ceramic		vinyl also acceptable
2142	Skirting	Tiles	Glazed	One course high		or floor vinyl covered skirting
3000	Wall finish	Paint	Acrylic, washable			
4030	Wall protection	Composite	Prefinished PVC	Corner guards to 900 AFFL		

Fittings and Furniture (FF)

ID	Description	Category	Group	Qty	Selection / Remarks
13664	Metal shelving: 750x400x2100	Furniture/ Fitting	3	7	heavy duty

Fixtures, Equipment and associated Services (FE)

ID	Description	Group	Qty	Ele	Data	CdW	HtW	WmW	Tap	Dns	Gas	Selection / Remarks
44110	Refrigerator: with freezer	3	1	yes	___	___	___	___	___	___	___	

Services

ID	Description	Service Category	Qty	Selection / Remarks
5000	Airconditioning	HVAC		
6000	General fluorescent	Lighting		
9001	GPO: Double	Power	1	



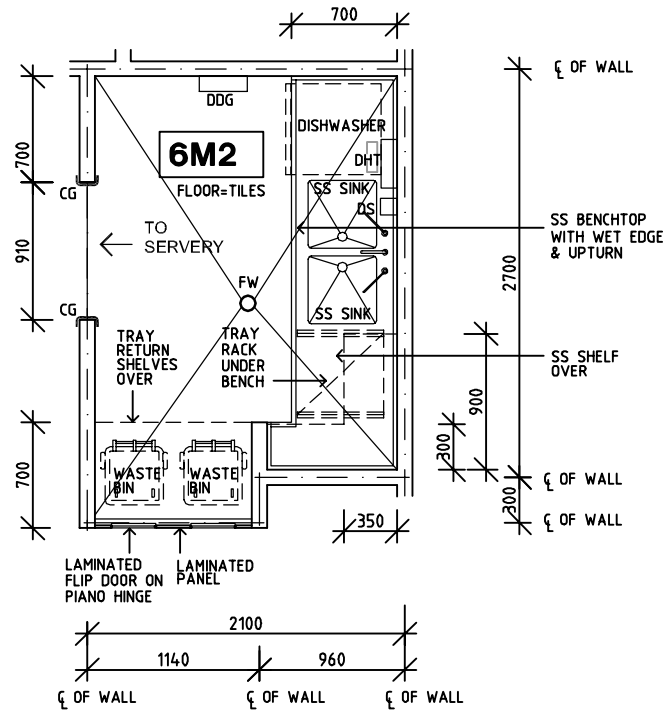
Indian HFG Standard Components

Room Layout Sheet

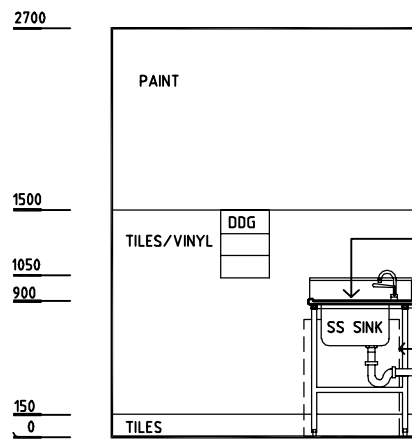
Room Name **Coffee Shop - Wash-up**

RLS Room Code **COFS-W-IN**
RDS Room Code **COFS-W-IN**

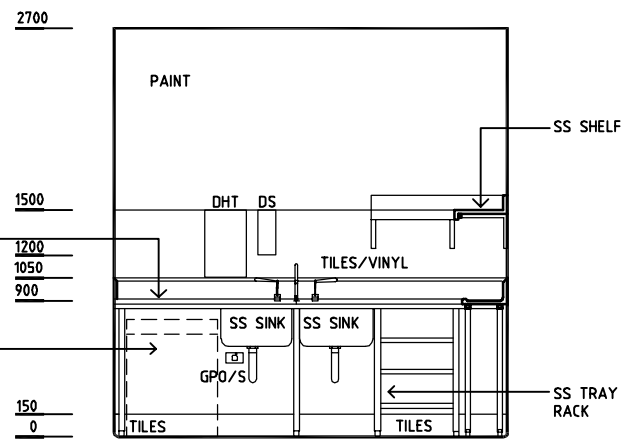
- CG CORNER PROTECTION
- DDG DISPENSER - DISPOSABLE GLOVES
- DHT DISPENSER - HAND TOWEL
- DS DISPENSER - SOAP
- FW FLOOR WASTE
- GPO/S SPECIAL PURPOSE OUTLET
- LS LIGHT SWITCH
- SS STAINLESS STEEL



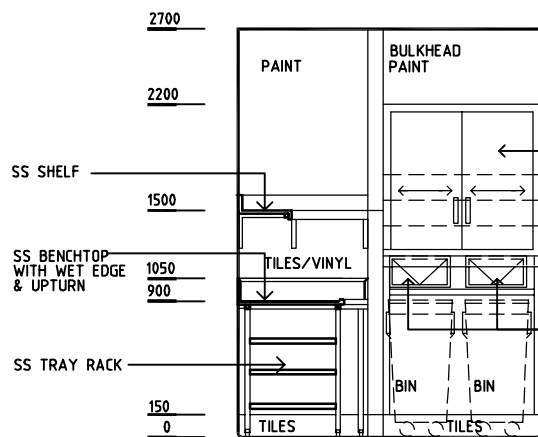
PLAN



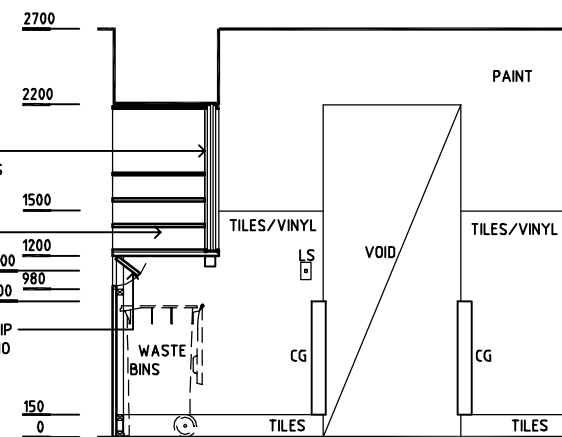
ELEVATION 1



ELEVATION 2



ELEVATION 3



ELEVATION 4

REV	DESCRIPTION	DATE	BY	REV	DESCRIPTION	DATE	BY	REV	DESCRIPTION	DATE	BY
1	FIRST ISSUE	24.02.2014	AA								

<p>Indian Health Facility Guidelines</p>	<small>Indian Health Facility Guidelines at: www.healthdesign.com.au/ihfg Editable version of Standard Components on Health Facility Briefing System (HFBS) at: www.healthdesign.com.au Provided by TAHPI</small>		DESIGNED	APPROVED	DATE	SCALE(S)	SHEET
	CC	DB	24.10.10	1:50 in A3	1 of 1		
	CAD FILE NAME		PAPER DRAWING ID		ISSUE		
COFS-W-IN		COFS-W-IN		1			

This document is for advisory purpose only

Department	Indian Health Facility Guidelines	Room Tag:	1975
Room Name	Coffee Shop - Wash-up	Room Code:	COFS-W-IN
Net Room Area Briefed	6.0 M2		
No of Rooms	1		
Subtotal of Briefed Area	6.00 M2		
Hours of Operation	8am to 8pm		
Occupancy	1 - 2 intermittently		
Also covers these Rooms			
Description/ Special Requirements	The Coffee Shop Wash-up room provides an area for washing and cleaning of utensils, crockery glassware and trays. used in the Preparation, Servery and Dining areas. The Wash-up will have a tray return and a waste bin area.		
Amendment	05.03.2014 - Issue 1		

Room Fabric and outline specifications

ID	Fabric	Material	Finish	Specification	Selection	Remarks
5021	Ceiling	Plasterboard	Paint, washable	Water resistant, flush set, suspended		
6025	Cornice	Aluminium	Powdercoat	shadow line		
1175	Floor finish	Tiles	Non-slip	Ceramic		vinyl also acceptable
2142	Skirting	Tiles	Glazed	One course high		or floor vinyl covered skirting
3000	Wall finish	Paint	Acrylic, washable			
3086	Wall finish	Tiles	Glazed	To 1500AFFL		vinyl also acceptable
4030	Wall protection	Composite	Prefinished PVC	Corner guards to 900 AFFL		

Fittings and Furniture (FF)

ID	Description	Category	Group	Qty	Selection / Remarks
1010	Bench: stainless steel	Metalwork	1	1	with wet edge
4390	Cupboard: special wall mounted	Furniture/ Fitting	1	1	tray return shelves with sliding doors, swing doors to bin hold
6152	Dispenser: disposable glove	Furniture/ Fitting	2	1	
6154	Dispenser: paper/ hand towel	Furniture/ Fitting	2	1	to sink
6156	Dispenser: soap	Furniture/ Fitting	2	1	to sink
19810	Shelf: SS, over	Metalwork	1	1	over bench
19820	Shelf: SS, under	Metalwork	1	1	tray shelves
24101	Waste bin: 120 Litre	Furniture/ Fitting	3	2	

Fixtures, Equipment and associated Services (FE)

ID	Description	Group	Qty	Ele	Data	CdW	HtW	WmW	Tap	Dns	Gas	Selection / Remarks
16600	Dishwasher: commercial	3	1	yes	___	yes	___	___	yes	yes	___	under bench, optional
49116	Sink: 450x450x300D	1	2	___	___	yes	opt	opt	yes	yes	___	hot water

Services

Department Indian Health Facility Guidelines
Room Name Coffee Shop - Wash-up

Room Tag: 1975
Room Code: COFS-W-IN

ID	Description	Service Category	Qty	Selection / Remarks
5000	Airconditioning	HVAC		
4033	Floor waste	Hydraulics		
6000	General fluorescent	Lighting		
9060	GPO: Special: for equipment	Power	1	Dishwasher if required