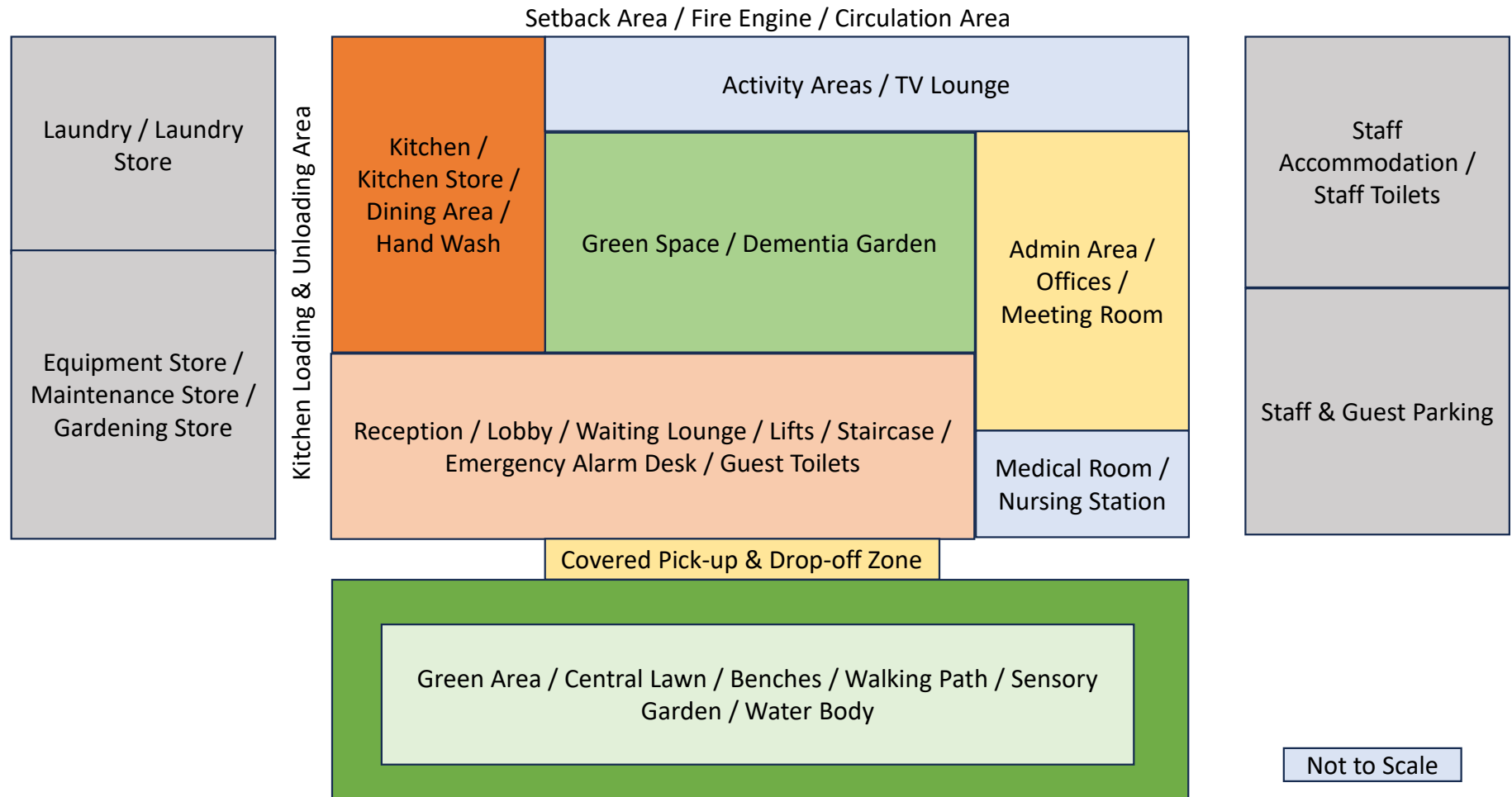


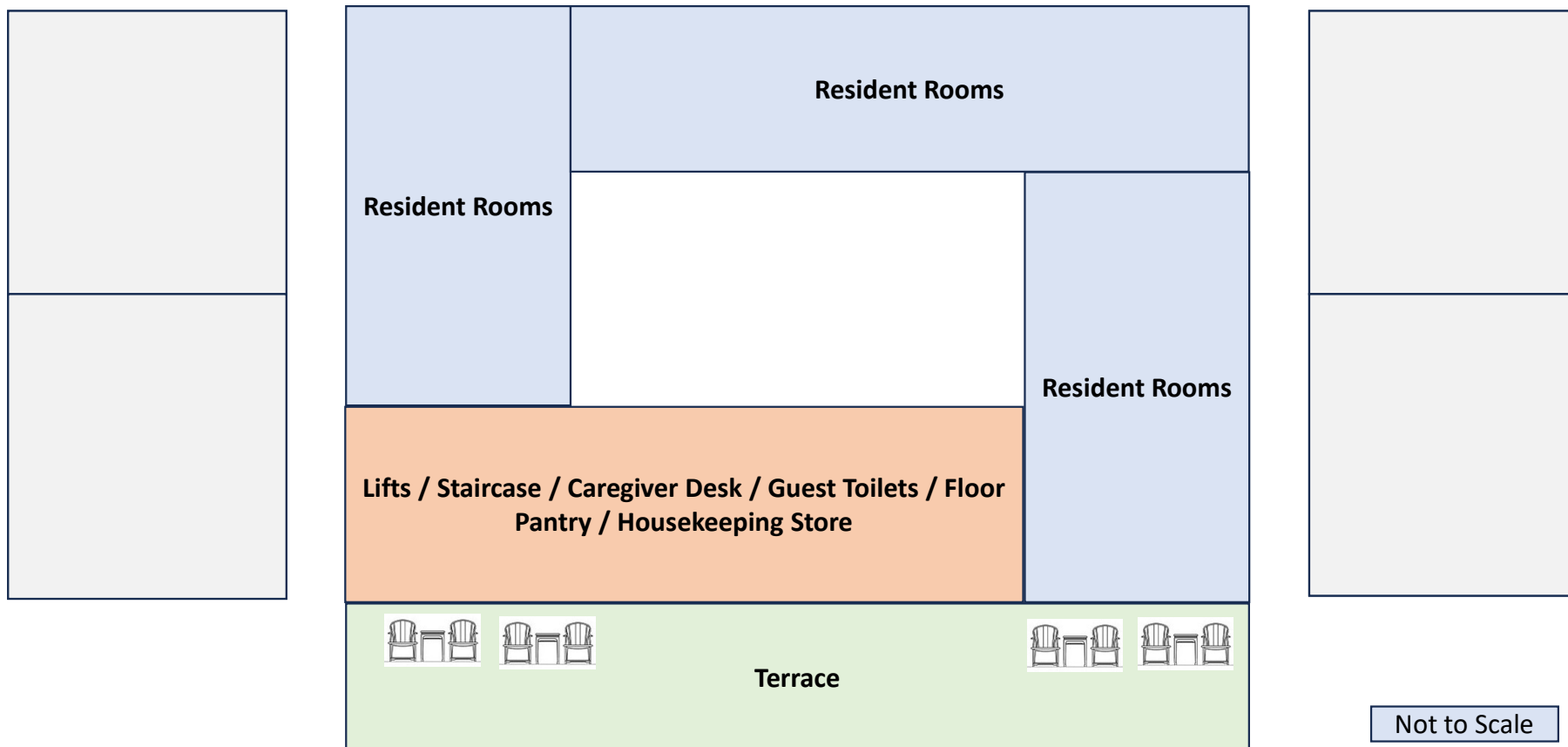
## Suggested 4/6 Bedded Dormitory Living For Senior Citizen Care Homes (Functional Space Layout)

Prepared by: Pankaj Mehrotra, Senior Living Consultant



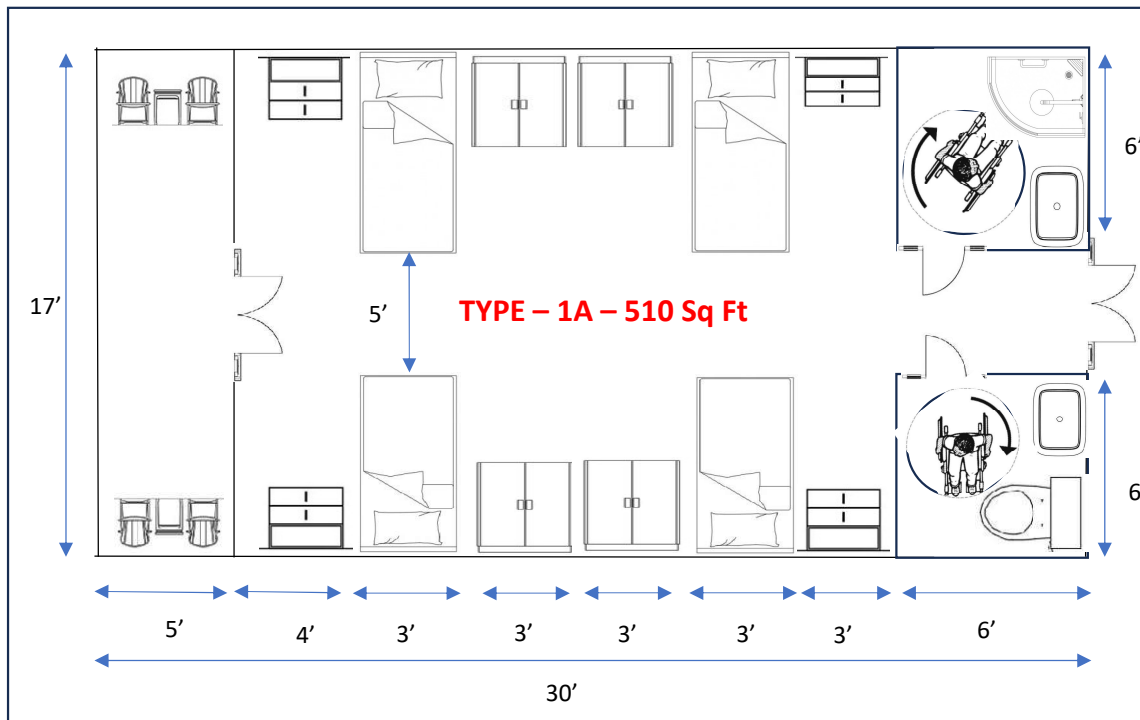
## Suggested 4/6 Bedded Dormitory Living For Senior Citizen Care Homes (Typical Floor Layout)

Prepared by: Pankaj Mehrotra, Senior Living Consultant



## Suggested 4/6 Bedded Dormitory Living For Senior Citizen Care Homes (Dormitory Layout)

Prepared by: Pankaj Mehrotra, Senior Living Consultant

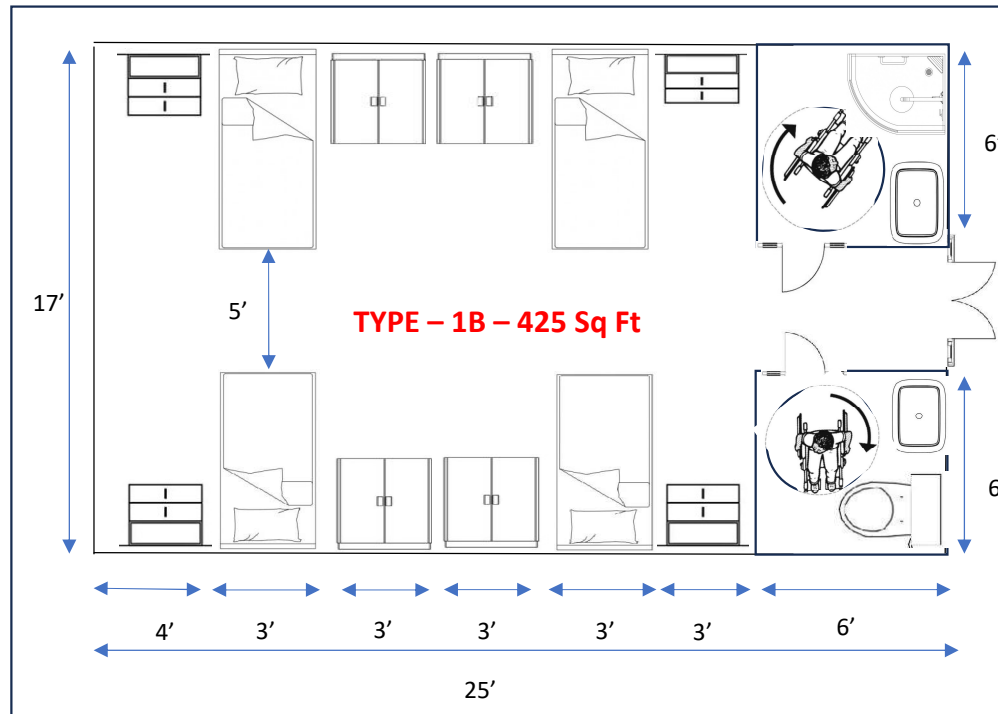


Carpet Area (CA)	Total	Per Resident
Bedroom	323	81
Toilet	36	9
Bathroom	36	9
Verandah	85	21
Foyer	30	7.5
Total CA	510	127
Total Excl'd Verandah	425	106

Not to Scale

## Suggested 4/6 Bedded Dormitory Living For Senior Citizen Care Homes (Dormitory Layout)

Prepared by: Pankaj Mehrotra, Senior Living Consultant

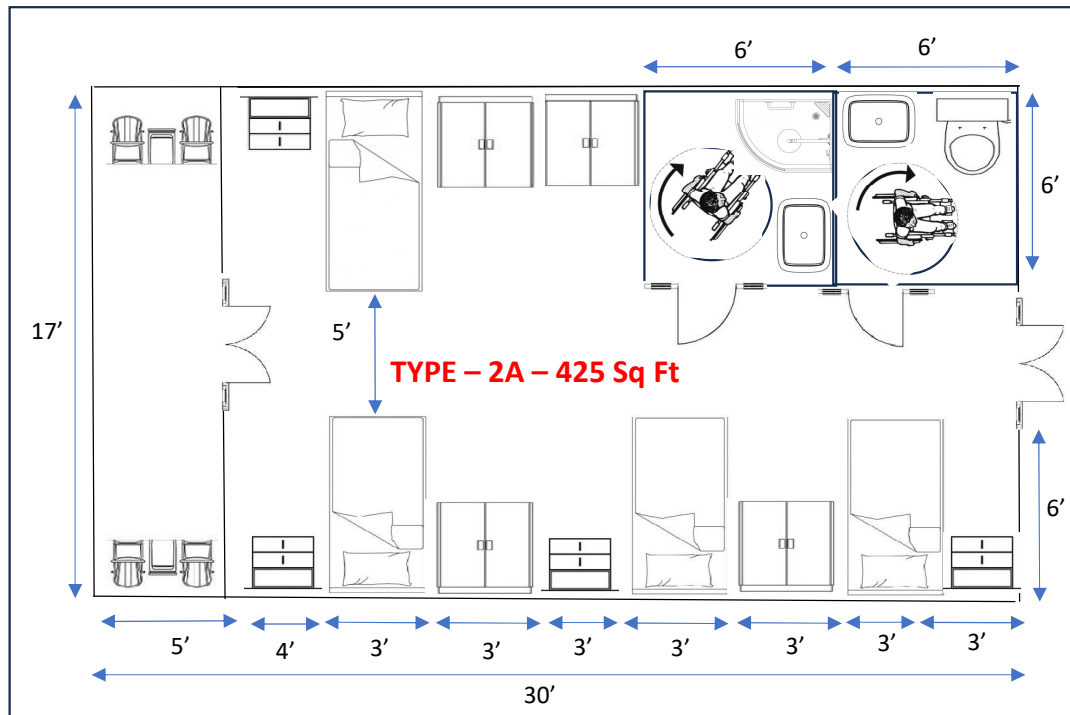


Carpet Area (CA)	Total	Per Resident
Bedroom	323	81
Toilet	36	9
Bathroom	36	9
Foyer	30	7.5
Total CA	425	107

Not to Scale

## Suggested 4/6 Bedded Dormitory Living For Senior Citizen Care Homes (Dormitory Layout)

Prepared by: Pankaj Mehrotra, Senior Living Consultant

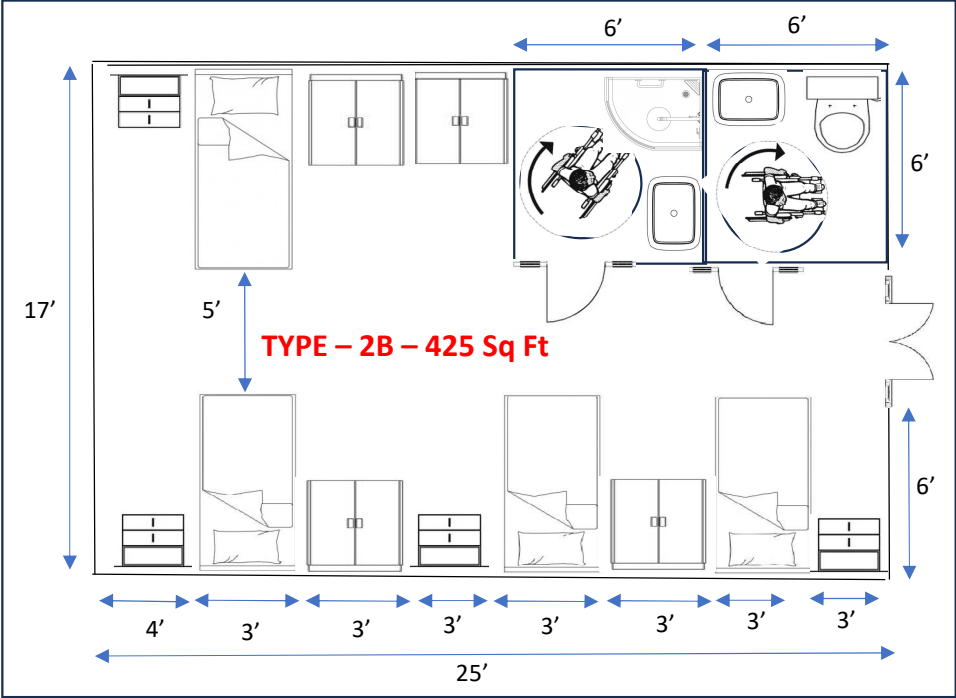


Carpet Area (CA)	Total	Per Resident
Bedroom	353	88
Toilet	36	9
Bathroom	36	9
Verandah	85	21
Foyer	0	0
Total CA	510	127
Total Excl'd Verandah	425	106

Not to Scale

**Suggested 4/6 Bedded Dormitory Living For Senior Citizen Care Homes (Dormitory Layout)**  
Prepared by: Pankaj Mehrotra, Senior Living Consultant

**Suggested 4/6 Bedded Dormitory Living For Senior Citizen Care Homes (Dormitory Layout)**  
Prepared by: Pankaj Mehrotra, Senior Living Consultant

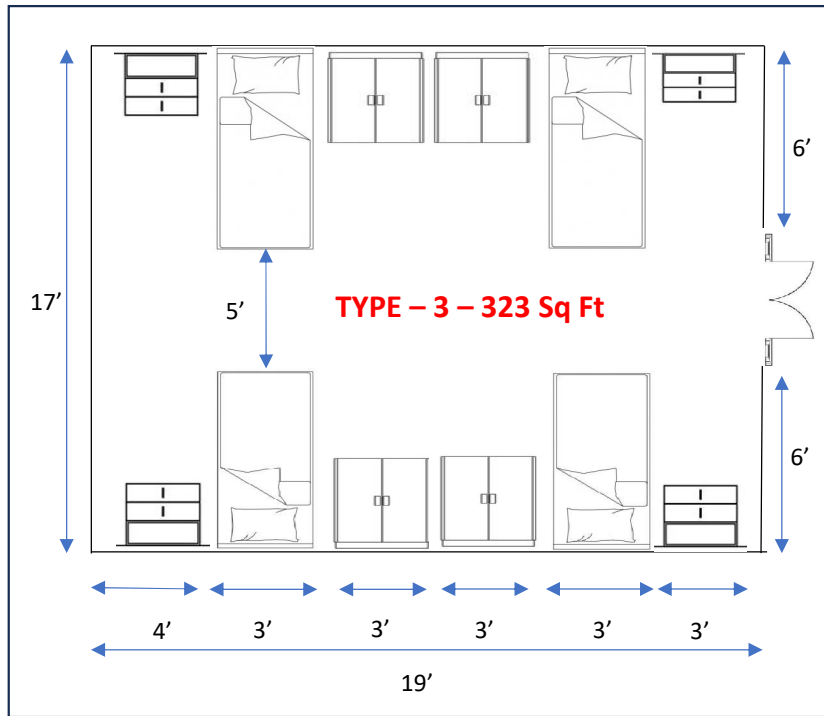


Carpet Area (CA)	Total	Per Resident
Bedroom	353	88
Toilet	36	9
Bathroom	36	9
Foyer	0	0
Total CA	425	106

Not to Scale

## Suggested 4/6 Bedded Dormitory Living For Senior Citizen Care Homes (Dormitory Layout)

Prepared by: Pankaj Mehrotra, Senior Living Consultant

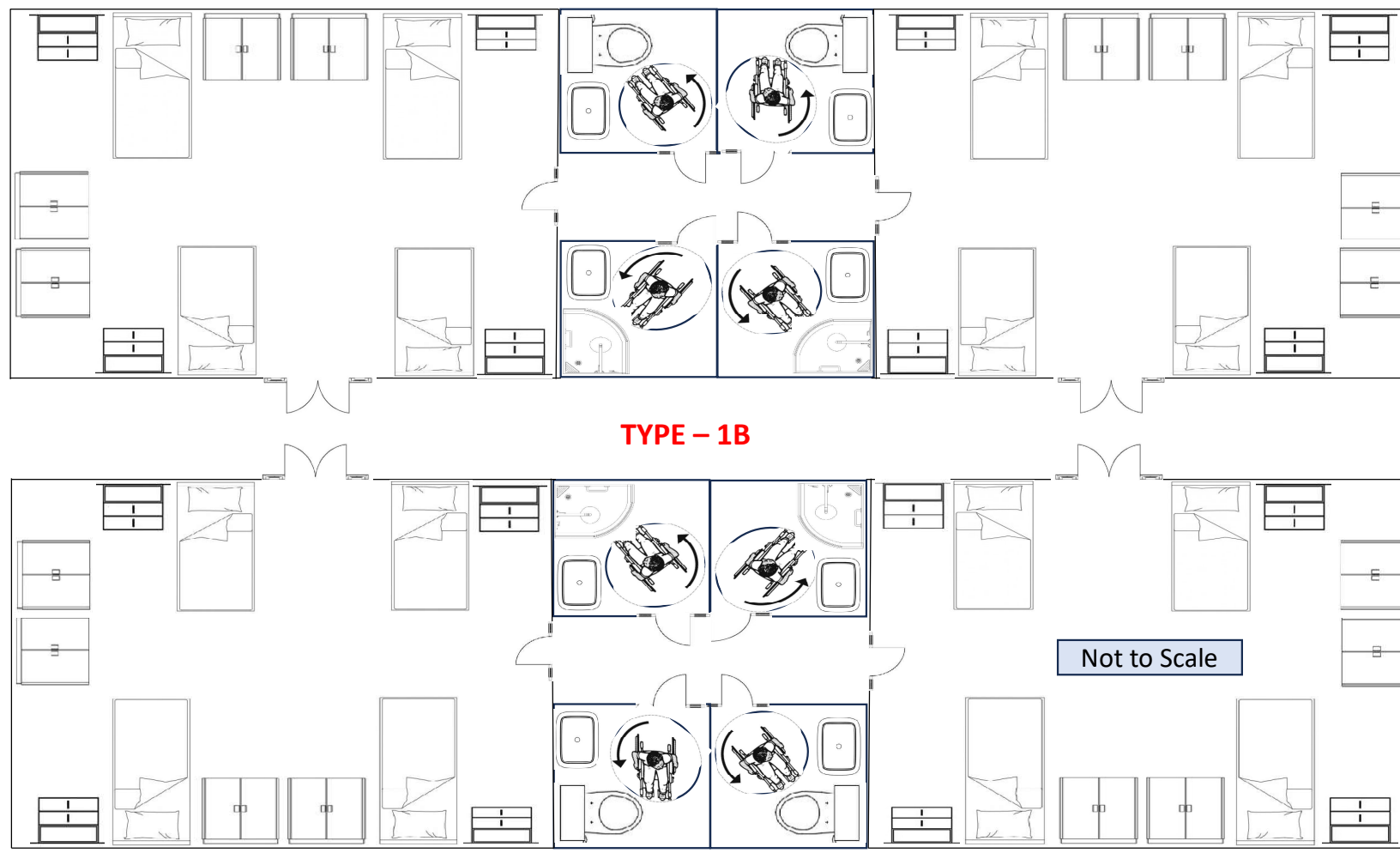


Carpet Area (CA)	Total	Per Resident
Bedroom	323	81
Foyer	0	0
Total CA	323	81

Not to Scale

## Suggested 4/6 Bedded Dormitory Living For Senior Citizen Care Homes (Dormitory Floor Layout)

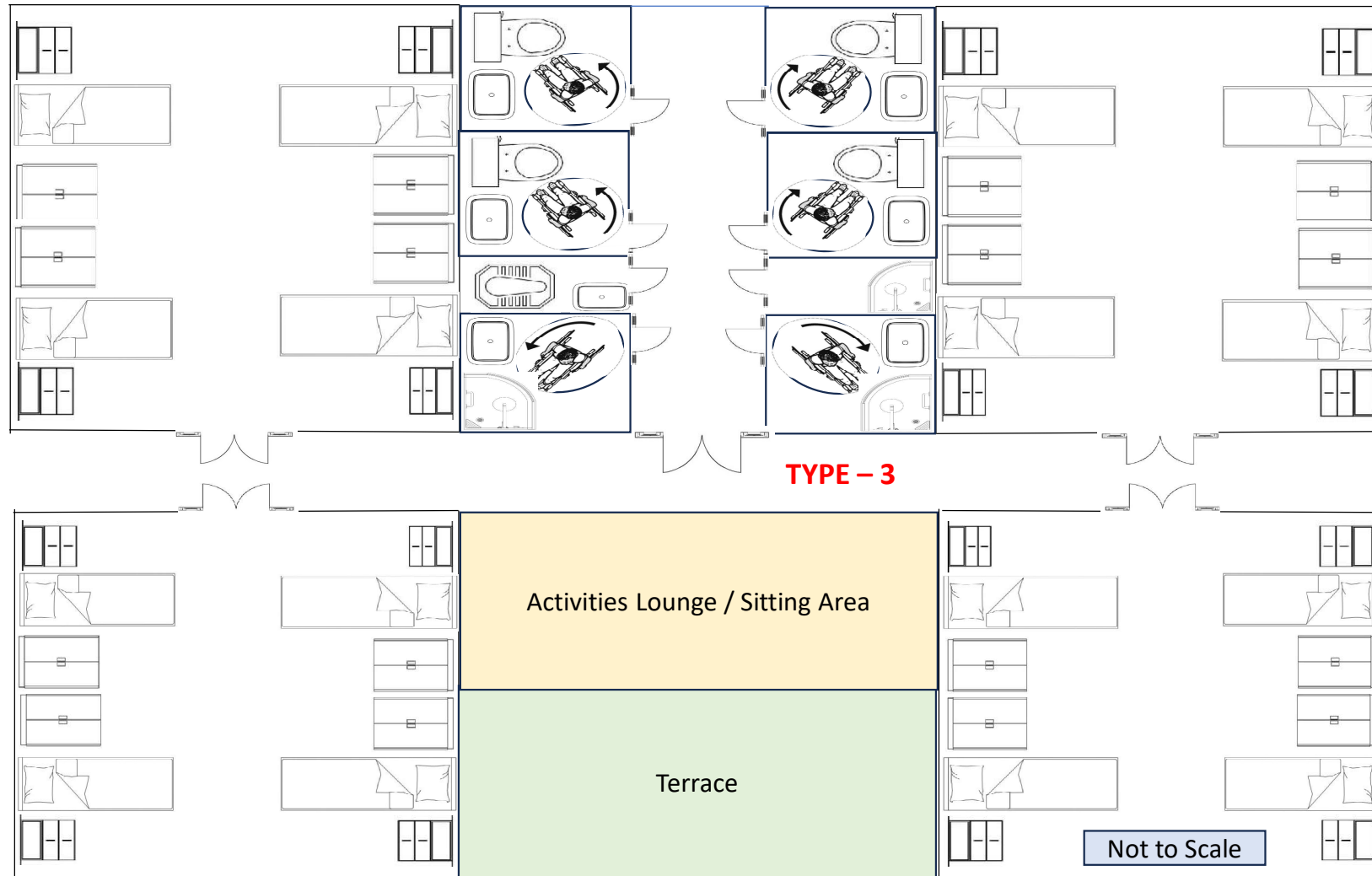
Prepared by: Pankaj Mehrotra, Senior Living Consultant

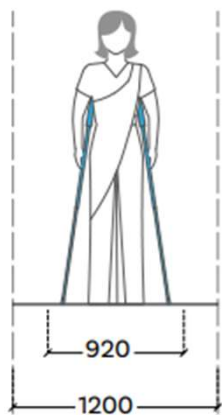




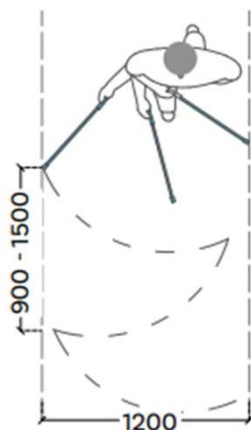
## Suggested 4/6 Bedded Dormitory Living For Senior Citizen Care Homes (Dormitory Floor Layout)

Prepared by: Pankaj Mehrotra, Senior Living Consultant





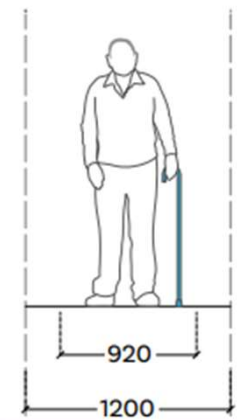
Person using crutches



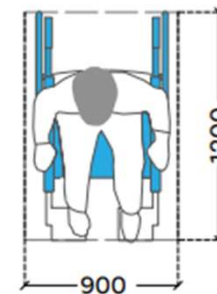
Person with visual impairment using a white cane



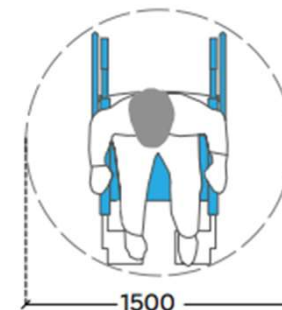
Person with visual impairment and a sighted escort



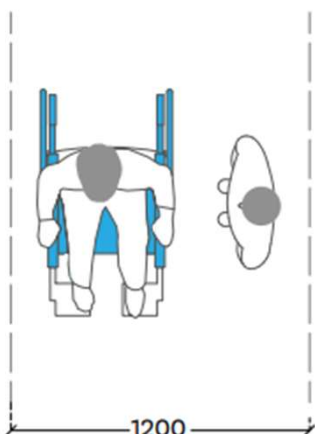
Person with a walking stick



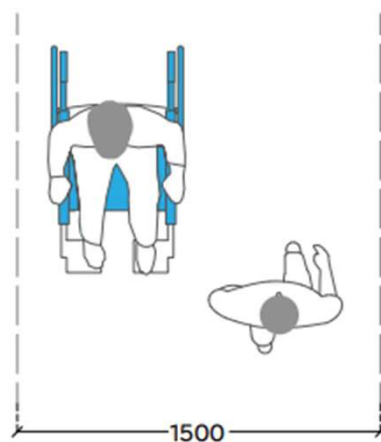
Wheelchair: minimum clear floor space



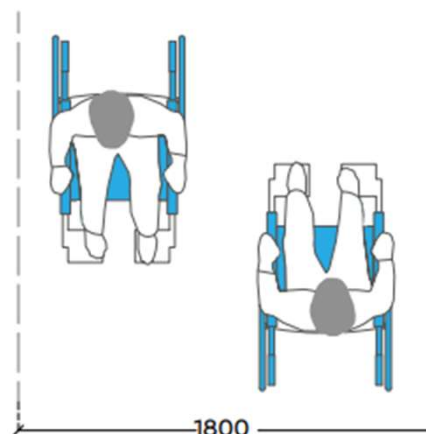
Wheelchair: minimum clear turning space



Wheelchair and a person facing sideways



Wheelchair and a person crossing



Two wheelchairs crossing side by side

**Minimum widths of a clear walkway for diverse user groups**

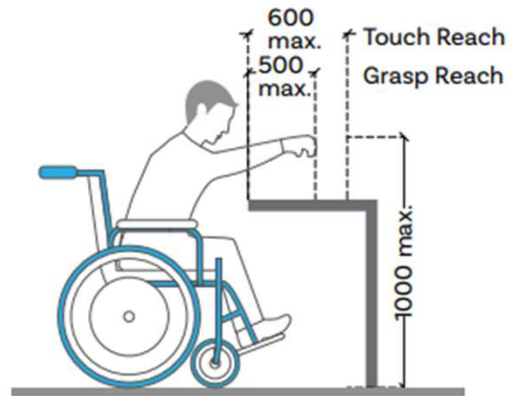
**Harmonised Guidelines and Standards for Universal Accessibility in India 2021**



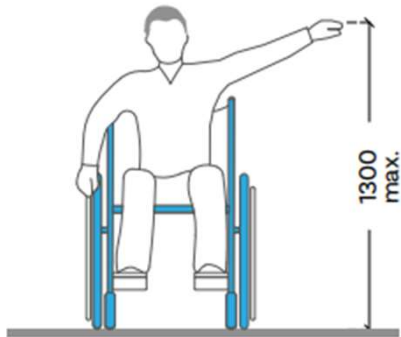
Forward upper reach without obstructions



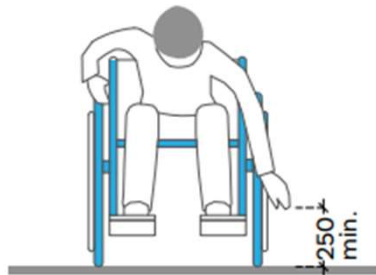
Forward lower reach without obstructions



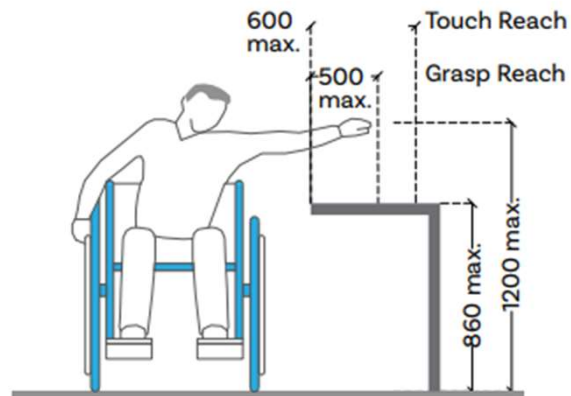
Forward reach with obstructions



Side upper reach without obstructions

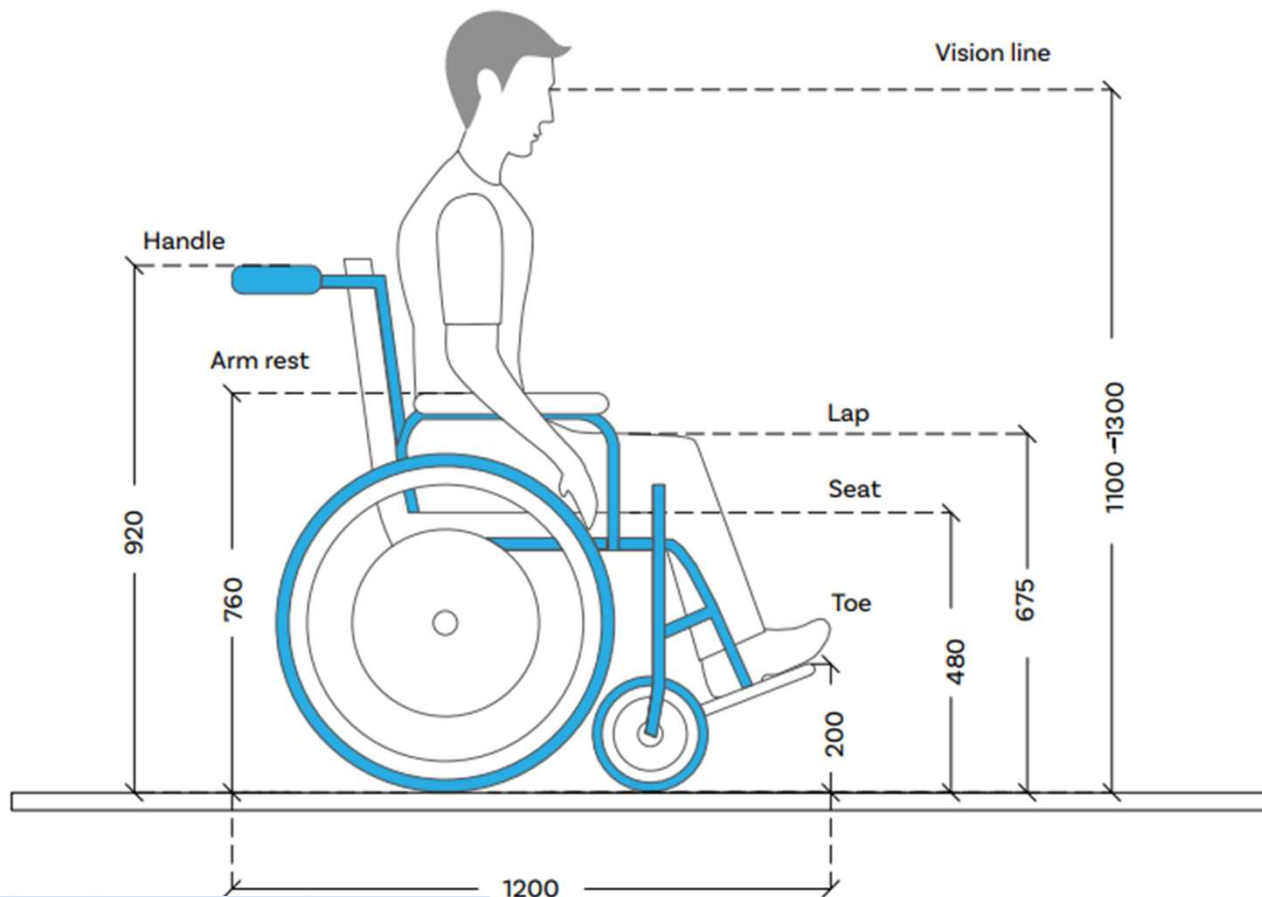


Side lower reach without obstructions



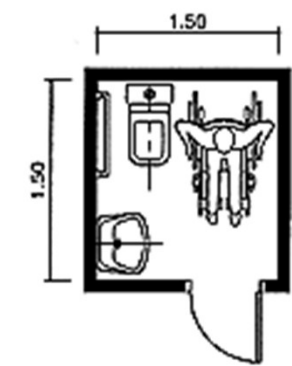
Side reach with obstructions

**Harmonised Guidelines and  
Standards for Universal Accessibility  
in India 2021**

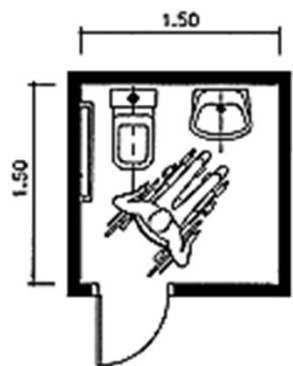


Wheelchair Dimensions

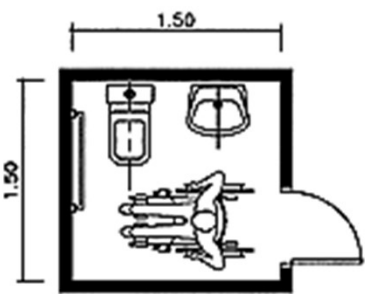
**Harmonised Guidelines and  
Standards for Universal Accessibility  
in India 2021**



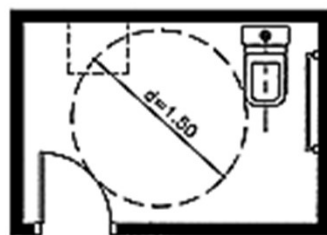
Parallel approach



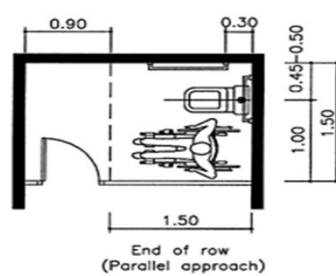
Diagonal approach



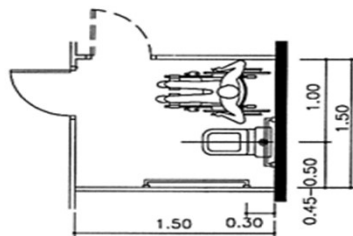
Perpendicular approach



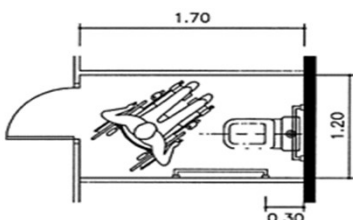
Full maneuvering space



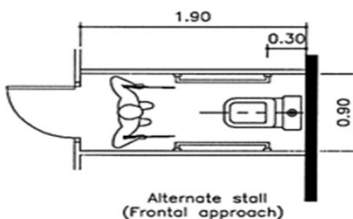
End of row  
(Parallel approach)



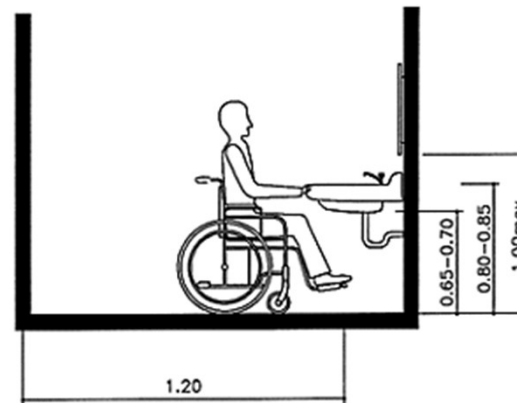
Middle of row  
(Parallel approach)



Alternate stall  
(Diagonal approach)



Alternate stall  
(Frontal approach)



Wash basin

